



Brady Sullivan Properties
 670 N. Commercial Street
 Manchester, nh 03101
 603.622.6223



Owner
**BRADY SULLIVAN
 PROPERTIES**

Project
900 ELM STREET
 MANCHESTER NH

SUITE 801
4,066 RSF

Seals
 PROGRESS PRINT

Issues	
Date	Description

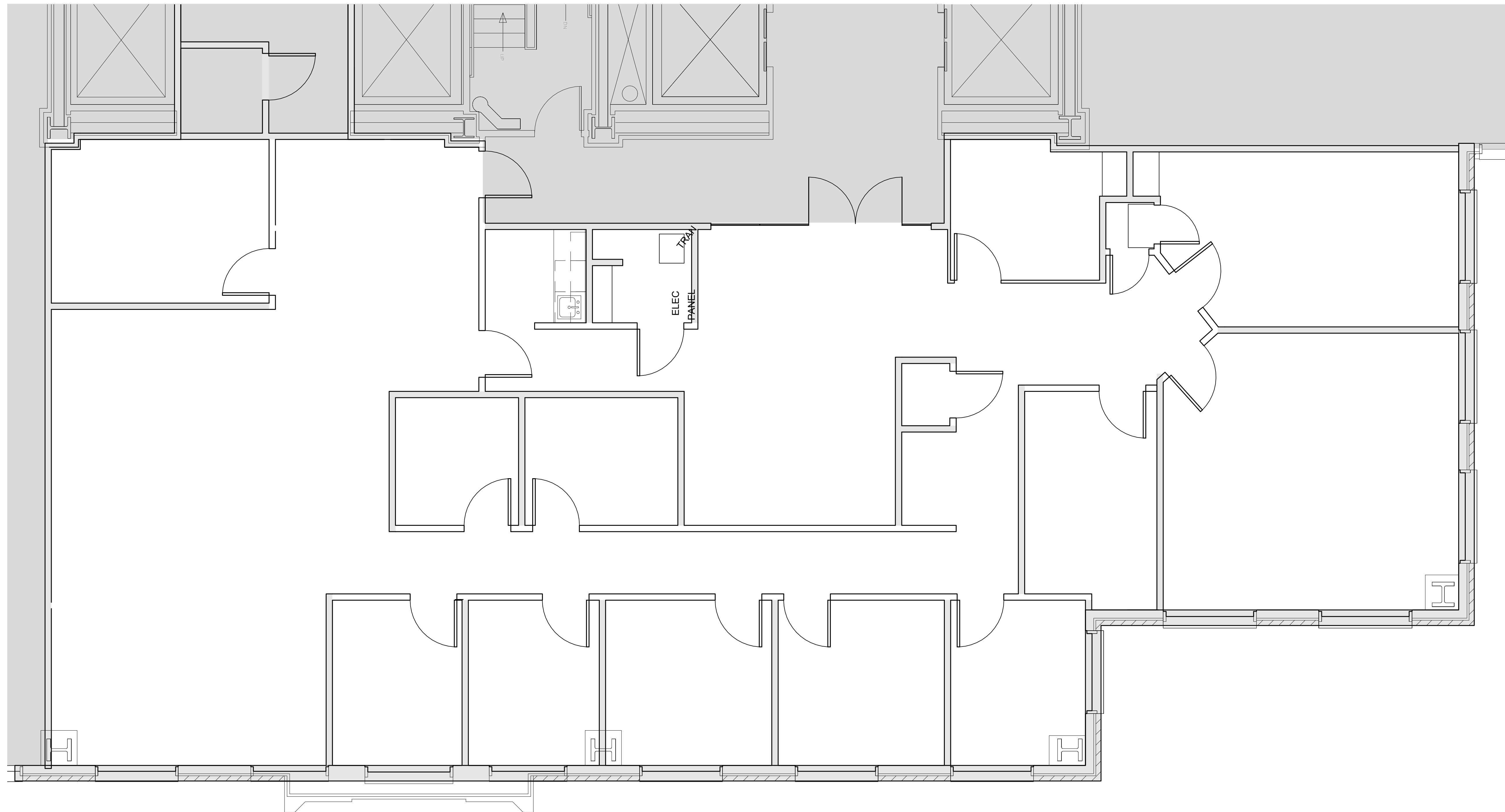
Revisions		
No.	Date	Description

Drawing Title

Issue Date: 3-5-2018
 Project No: Scale: 1/4" = 1'-0"
 Project Manager: Production Leader:
 Project Architect: Peer Reviewer:

Drawing Number

A.106



DISCLAIMER: ALL BUILDOUT IS BASED ON BRADY SULLIVAN PROPERTIES "CONSTRUCTION STANDARDS".
 BRADY SULLIVAN PROPERTIES RESERVES THE RIGHT TO ISSUE A CHANGE ORDER FOR ADDITIONAL WORK
 NOT INCLUDED IN DRAWINGS.

3/5/2018 2:06:24 PM