



Brady Sullivan Properties
670 N. Commercial Street
Manchester, nh 03101
603.622.6223



Owner
**BRADY SULLIVAN
PROPERTIES**
MANCHESTER NH

Project
1750 Elm Street
MANCHESTER NH

Seals

4,502 RSF

Issues	Date	Description

Revisions	No.	Date	Description

Drawing Title
EXISTING PLAN

Issue Date: 12-12-2023

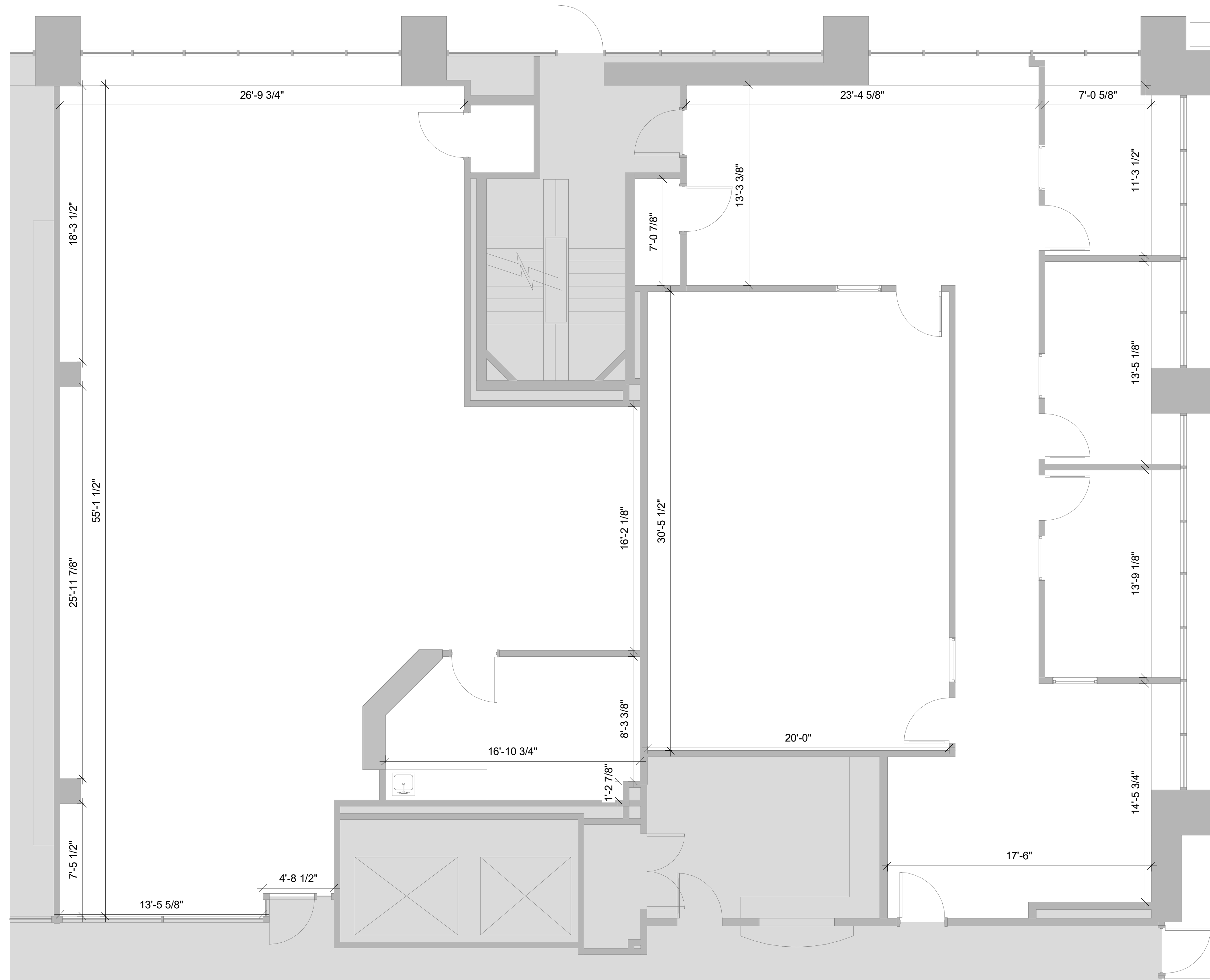
Project No: Scale: 1/4" = 1'-0"

Project Manager: Production Leader:

Project Architect: LP Peer Reviewer: CL

Drawing Number

A103



1 SUITE 13 & 101 - EXISTING PLAN
1/4" = 1'-0"