



Brady Sullivan Properties  
 670 N. Commercial Street  
 Manchester, nh 03101  
 603.622.6223



Owner  
**BRADY SULLIVAN  
 PROPERTIES**  
 MANCHESTER  
 NH

Project  
**1750 ELM STREET**  
 MANCHESTER, NH

**Suite 900**  
**2,085 RSF**

Seals

Issues	
Date	Description

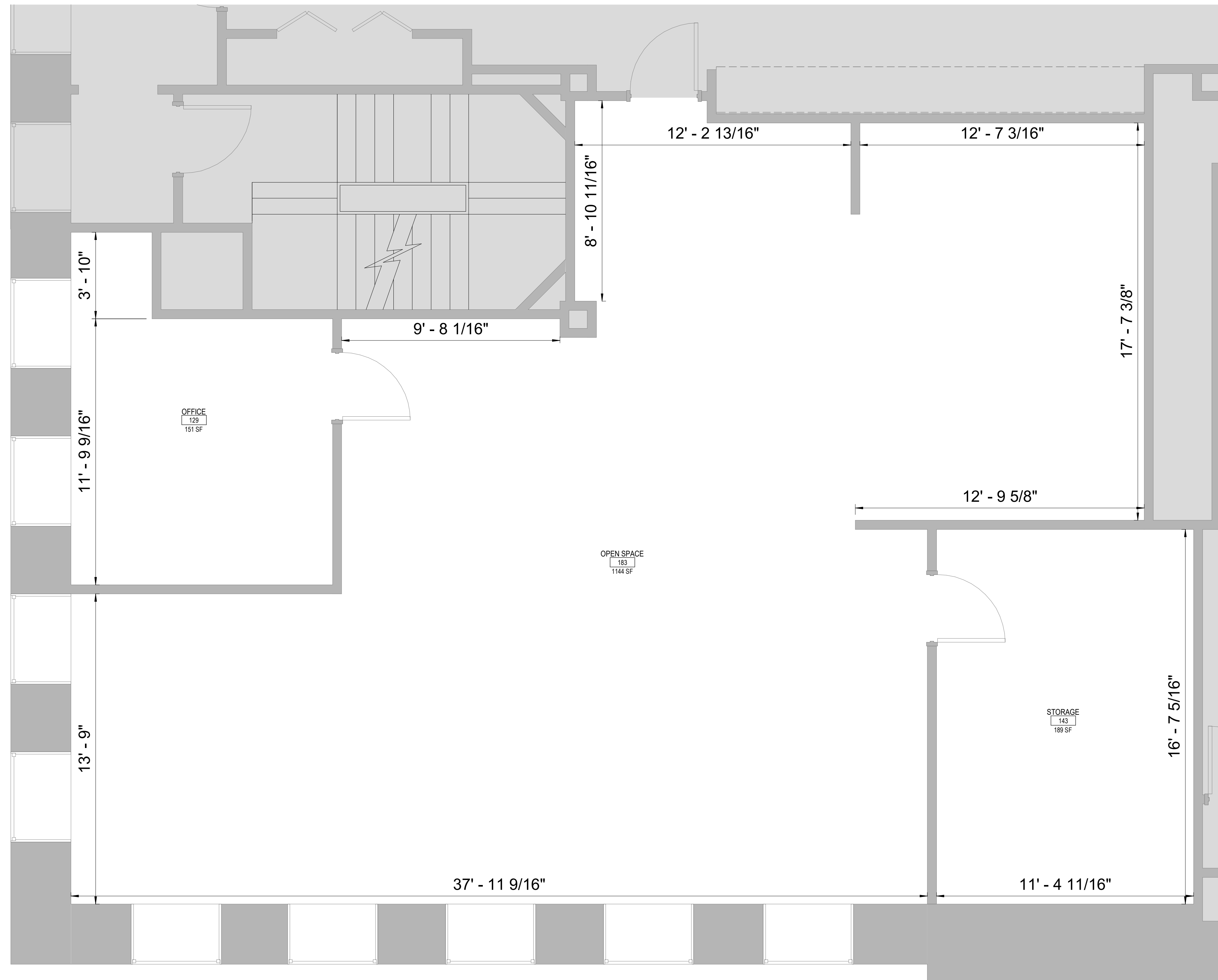
Revisions		
No.	Date	Description

Drawing Title  
**EXISTING PLAN**

Issue Date:	3-16-2026
Project No:	Scale: As Indicated
Project Manager:	Production Leader:
Project Architect:	Peer Reviewer:

Drawing Number  
**A111**

LEGEND			
	NOT IN SCOPE		PROPOSED ITEMS(HEAVY LINE WEIGHT)
	EXISTING ITEMS		DEMO ITEMS
	NEW DOOR AND FRAME		EXISTING DOOR AND FRAME TO REMAIN



**1** 9TH FLOOR - VACANT SUITE 2  
 3/8" = 1'-0"