



Brady Sullivan Properties
670 N. Commercial Street
Manchester, nh 03101
603.622.6223



Owner
BRADY SULLIVAN PROPERTIES
MANCHESTER NH

Project
1750 Elm Street
MANCHESTER NH

SUITE 101
2,280 RSF

Seals

Issues	
Date	Description

Revisions		
No.	Date	Description

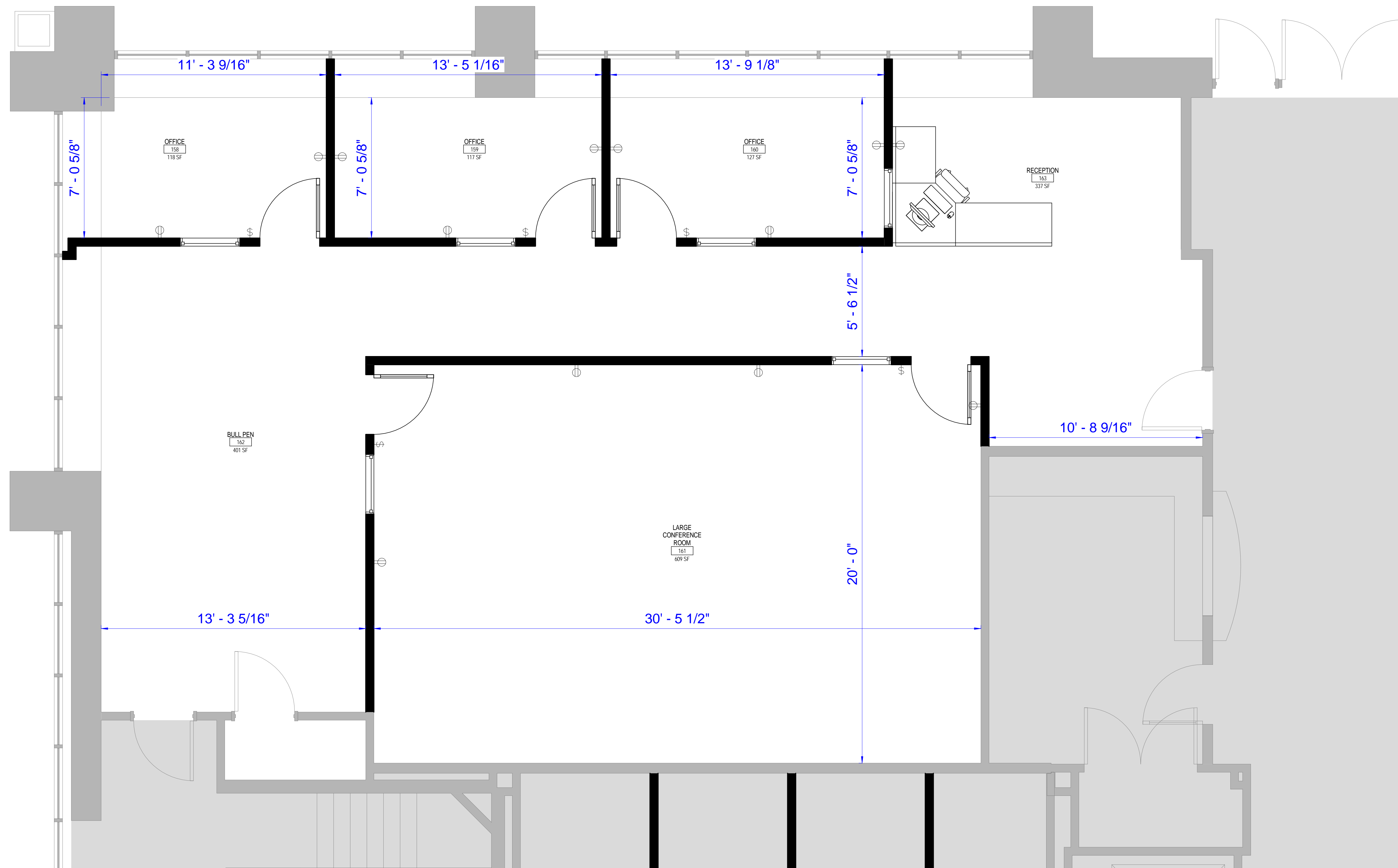
Drawing Title

Issue Date:	2-5-2018
Project No:	Scale: As indicated
Project Manager:	Production Leader:
Project Architect: CL	Peer Reviewer: CL

Drawing Number

A0.6

LEGEND			
	NOT IN SCOPE		PROPOSED ITEMS/HEAVY LINE WEIGHT
	EXISTING ITEMS		DEMO
	NEW DOOR AND FRAME		EXISTING DOOR AND FRAME TO REMAIN



1 SUITE 101
3/8" = 1'-0"

DISCLAIMER: ALL BUILDOUT IS BASED ON BRADY SULLIVAN PROPERTIES "CONSTRUCTION STANDARDS". BRADY SULLIVAN PROPERTIES RESERVES THE RIGHT TO ISSUE A CHANGE ORDER FOR ADDITIONAL WORK NOT INCLUDED IN DRAWINGS.

2/5/2018 12:22:42 PM