



BRADY SULLIVAN
P R O P E R T I E S

Prospect Hills

A Residential Neighborhood



ADDRESS

Mountain View Drive, Lebanon, NH

**PLEASE CALL TO SCHEDULE
YOUR PERSONAL TOUR**

603-622-6223

APPLY NOW AT bradysullivan-prospectshills.leasingmanager.net

Marketed by:

BRADY SULLIVAN PROPERTIES, LLC

670 N. Commercial Street, Suite 303 Manchester, NH 03101

Telephone (603) 622-6223

or visit us online at

WWW.BRADYSULLIVAN.COM

APPLY NOW AT bradysullivan-prospectshills.leasingmanager.net



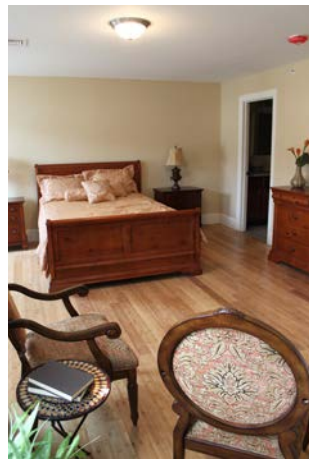
- Bamboo flooring
- Granite counter tops
- Stainless steel appliances
- In home washer & dryer
- Living room with fireplace
- Central air
- Vinyl siding
- Attached garage
- Some with basements



Prospect Hills

The Prospect Hills community offers 2 & 3 bedroom townhomes. These townhomes present various layouts with measurements ranging from 1,370 to 1,706 square feet.

The community is conveniently located minutes from interstate 89, Dartmouth Medical Center, Dartmouth College and Lebanon Middle School.



This private location offers open floor plans, oversized bedrooms, abundant closet space, two and a half baths, fireplace, laundry and garage parking all in a serene country setting with picturesque mountain views.