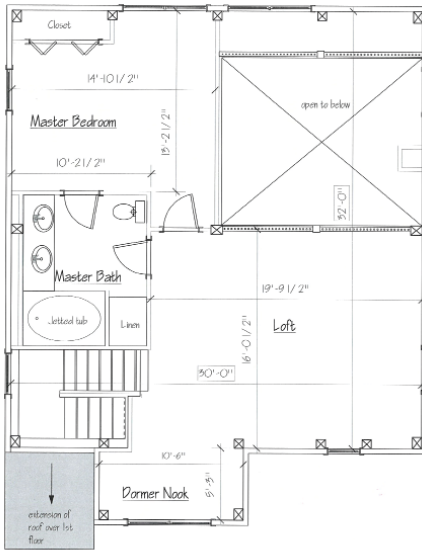


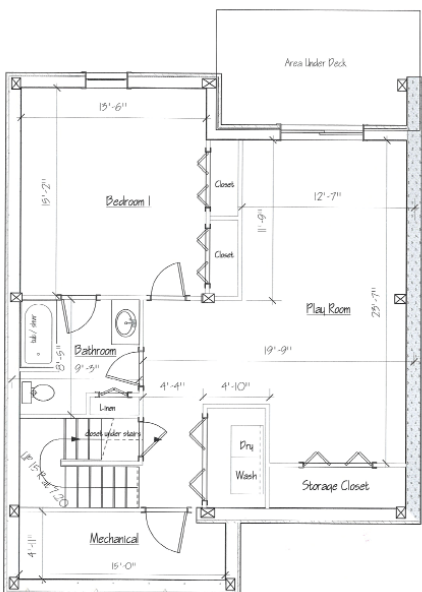
FIRST FLOOR PLAN



SECOND FLOOR PLAN

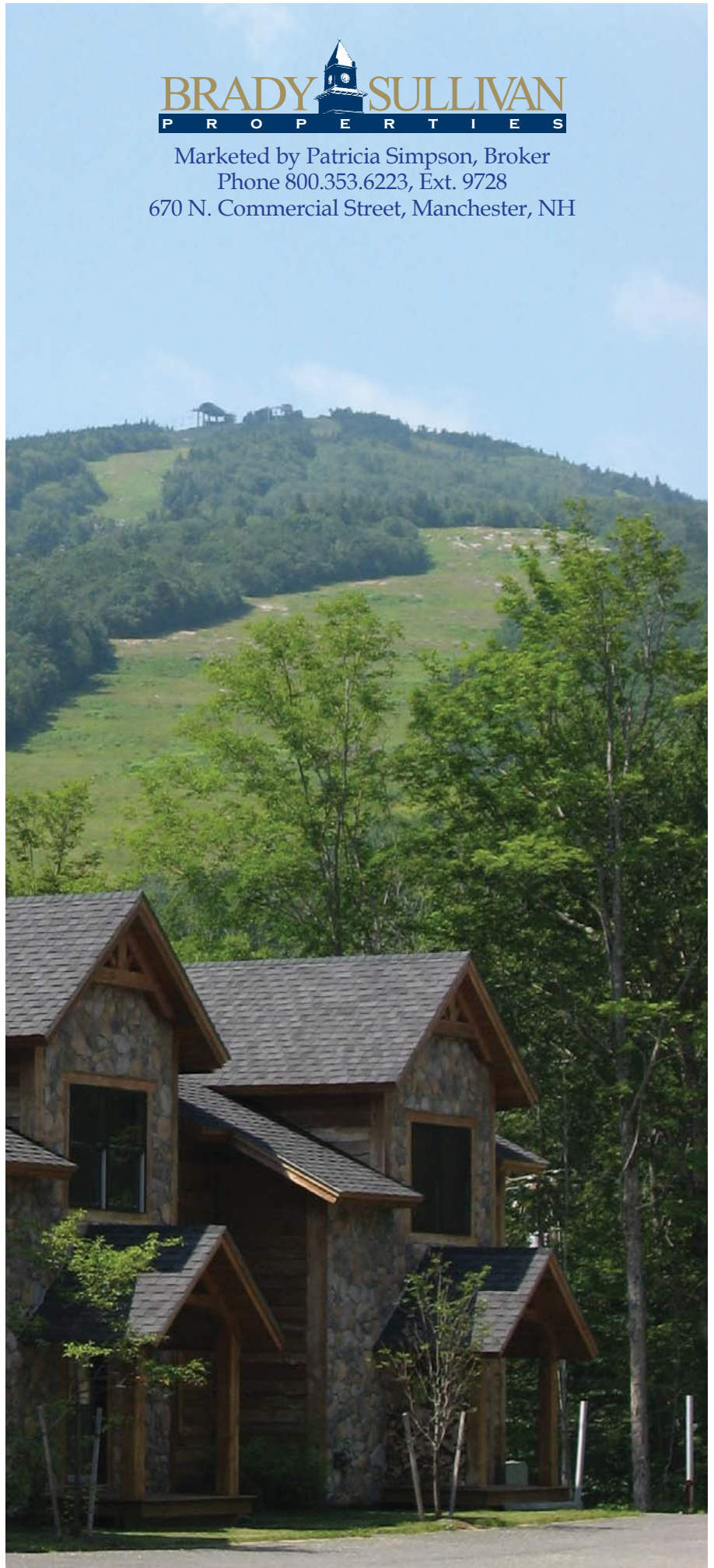


BASEMENT FLOOR PLAN



BRADY SULLIVAN
PROPERTIES

Marketed by Patricia Simpson, Broker
Phone 800.353.6223, Ext. 9728
670 N. Commercial Street, Manchester, NH



Floor Plans may vary and should be used for approximation purposes only.