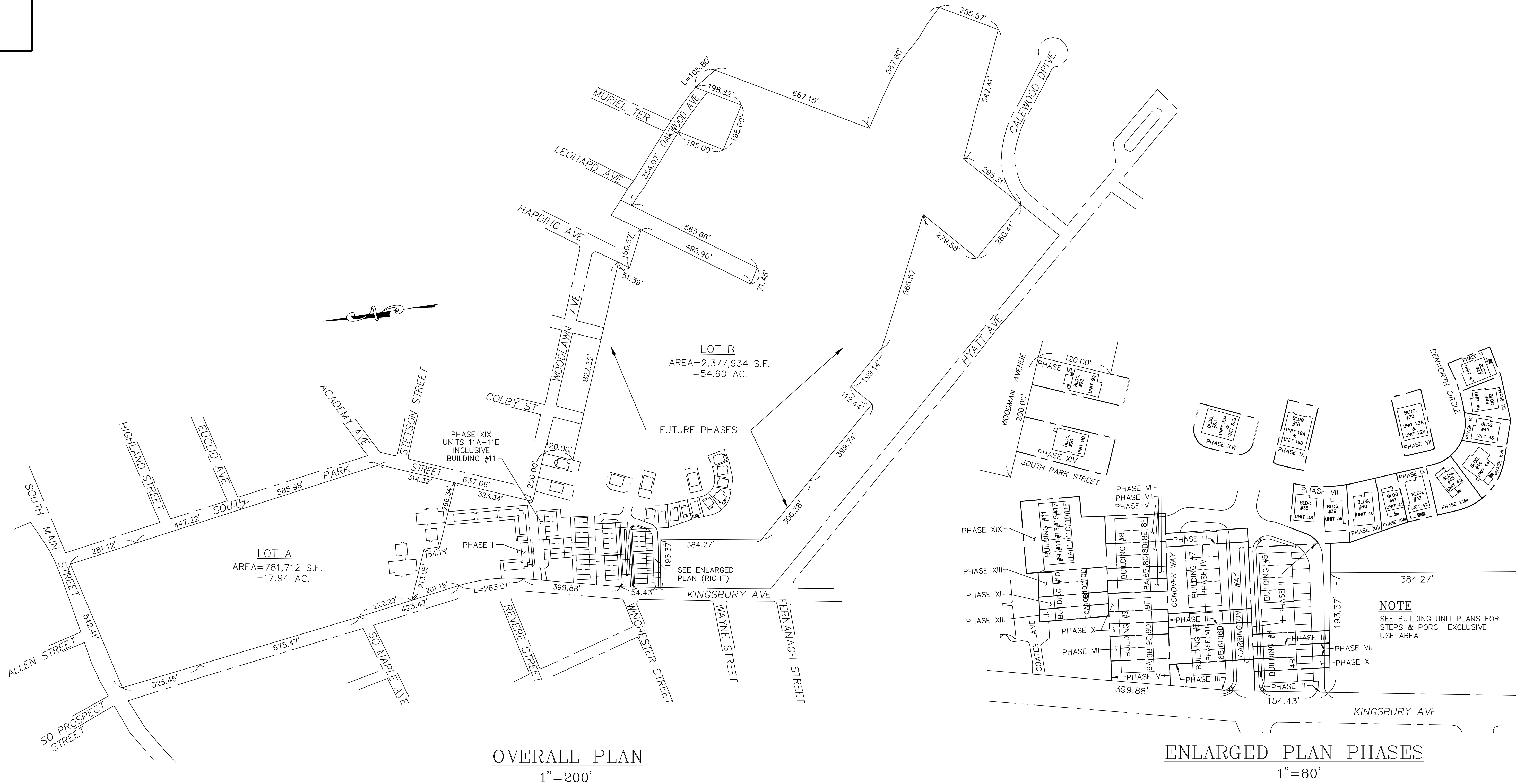


FOR REGISTRY USE



OVERALL PLAN
1"=200'

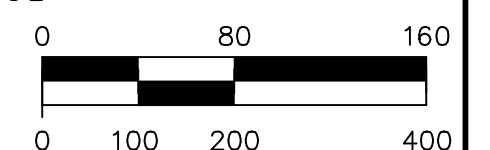
ENLARGED PLAN PHASES
1"=80'

"I HEREBY CERTIFY THAT THE PROPERTY LINES SHOWN ON THIS PLAN ARE THE LINES DIVIDING EXISTING OWNERSHIPS, AND THE LINES OF THE STREETS AND WAYS SHOWN ARE THOSE OF PUBLIC OR PRIVATE STREETS OR WAYS ALREADY ESTABLISHED, AND THAT NO NEW LINES FOR DIVISION OF EXISTING OWNERSHIP OR FOR NEW WAYS ARE SHOWN AND THIS PLAN CONFORMS TO THE RULES AND REGULATIONS OF THE REGISTRY OF DEEDS."

STEPHEN E. STAPINSKI, R.L.S. 12/1/10
DATE

SITE PLAN
BUILDING #11 UNITS 11A-11E INCLUSIVE
#9, #11, #13, #15, #17 COATES LANE
CARRINGTON ESTATES
HAVERHILL, MASSACHUSETTS
AS DRAWN FOR
BRADY SULLIVAN HAVERHILL, LLC
670 COMMERCIAL STREET-SUITE 303
MANCHESTER, NH 03101

DATE: DECEMBER 1, 2010
SCALE: AS NOTED



MERRIMACK ENGINEERING SERVICES
66 PARK STREET
ANDOVER, MASSACHUSETTS 01810 SHEET 1 OF 1

NOTE
SEE BUILDING UNIT PLANS FOR STEPS & PORCH EXCLUSIVE USE AREA