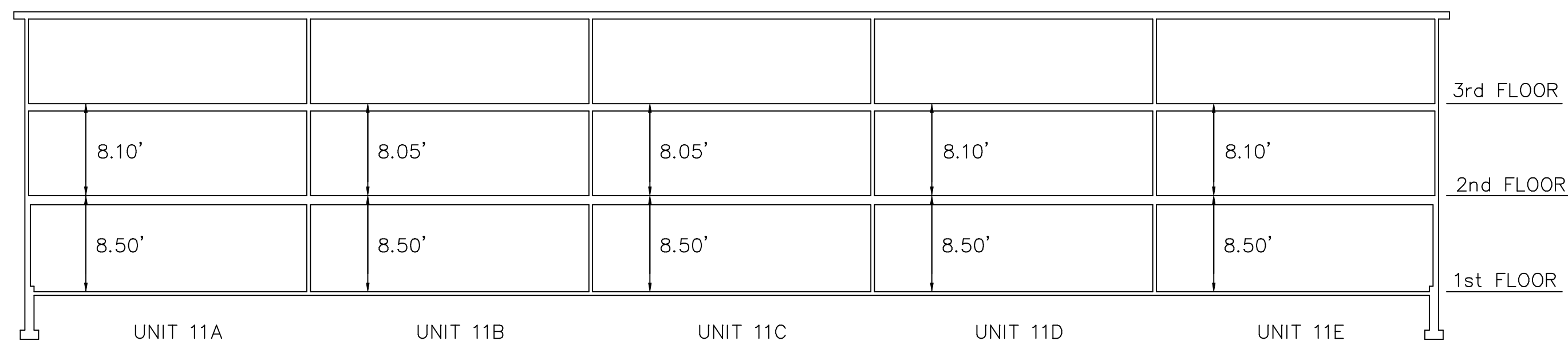
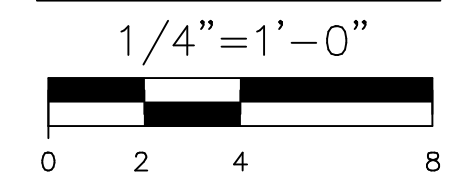


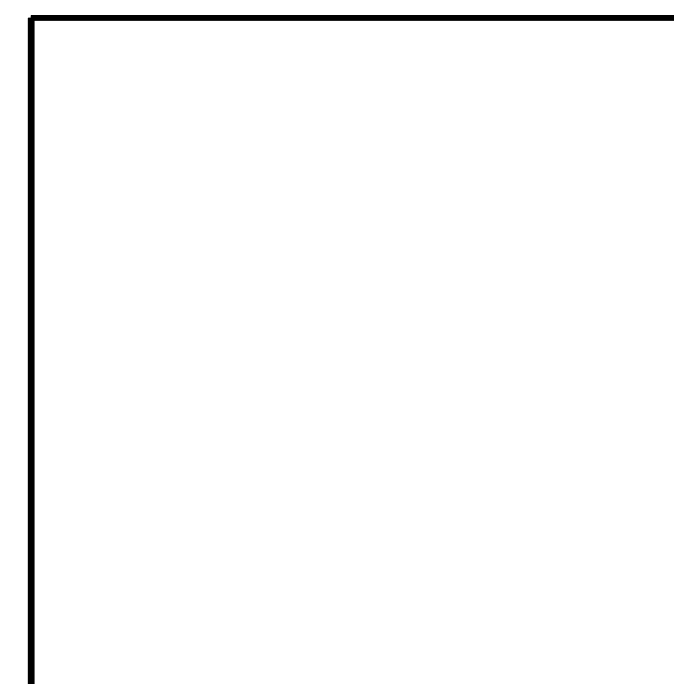
FIRST FLOOR



ELEVATIONS

AREA SUMMARY BUILDING #11 (PHASE XIX)					
	11A	11B	11C	11D	11E
FIRST FLOOR	727 S.F.	727 S.F.	726 S.F.	728 S.F.	726 S.F.
SECOND FLOOR	733 S.F.	733 S.F.	733 S.F.	733 S.F.	733 S.F.
THIRD FLOOR	720 S.F.	719 S.F.	720 S.F.	719 S.F.	719 S.F.
TOTAL	2,180 S.F.	2,179 S.F.	2,179 S.F.	2,180 S.F.	2,178 S.F.

FOR REGISTRY USE



"I HEREBY CERTIFY THAT THE WITHIN FLOOR PLANS FULLY AND ACCURATELY DEPICT THE LAYOUT LOCATION, UNIT NUMBERS AND DIMENSIONS OF THE UNITS OF THE CARRINGTON ESTATES CONDOMINIUM DEPICTED HEREON AS BUILT" THIS PLAN CONFORMS TO THE RULES AND REGULATIONS OF THE REGISTRY OF DEEDS.

STEPHEN E. STAPINSKI, R.L.S.

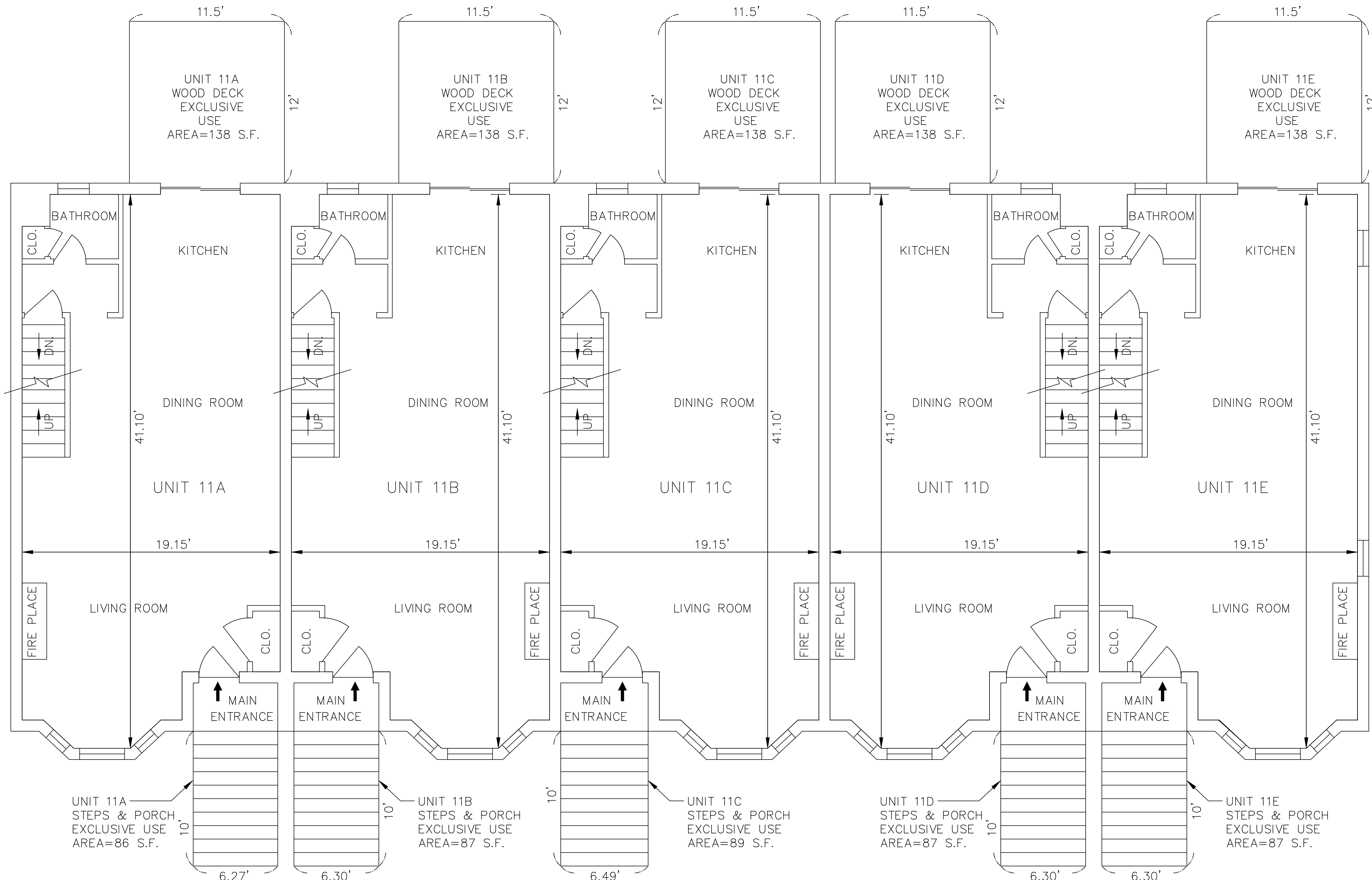
12/1/10
DATE

SITE PLAN
 BUILDING #11 UNITS 11A-11E INCLUSIVE
 #9, #11, #13, #15, #17 COATES LANE
 CARRINGTON ESTATES
 HAVERHILL, MASSACHUSETTS
 AS DRAWN FOR
 BRADY SULLIVAN HAVERHILL, LLC
 670 COMMERCIAL STREET-SUITE 303
 MANCHESTER, NH 03101

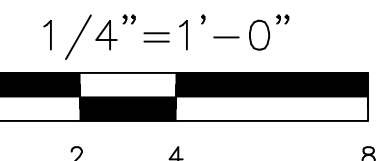
DATE: DECEMBER 1, 2010
 SCALE: AS NOTED



MERRIMACK ENGINEERING SERVICES
 66 PARK STREET
 ANDOVER, MASSACHUSETTS 01810 SHEET 1 OF 3



SECOND FLOOR

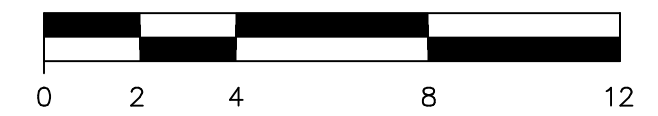


FOR REGISTRY USE

"I HEREBY CERTIFY THAT THE WITHIN FLOOR PLANS FULLY AND ACCURATELY DEPICT THE LAYOUT LOCATION, UNIT NUMBERS AND DIMENSIONS OF THE UNITS OF THE CARRINGTON ESTATES CONDOMINIUM DEPICTED HEREON AS BUILT"
 THIS PLAN CONFORMS TO THE RULES AND REGULATIONS OF THE REGISTRY OF DEEDS.

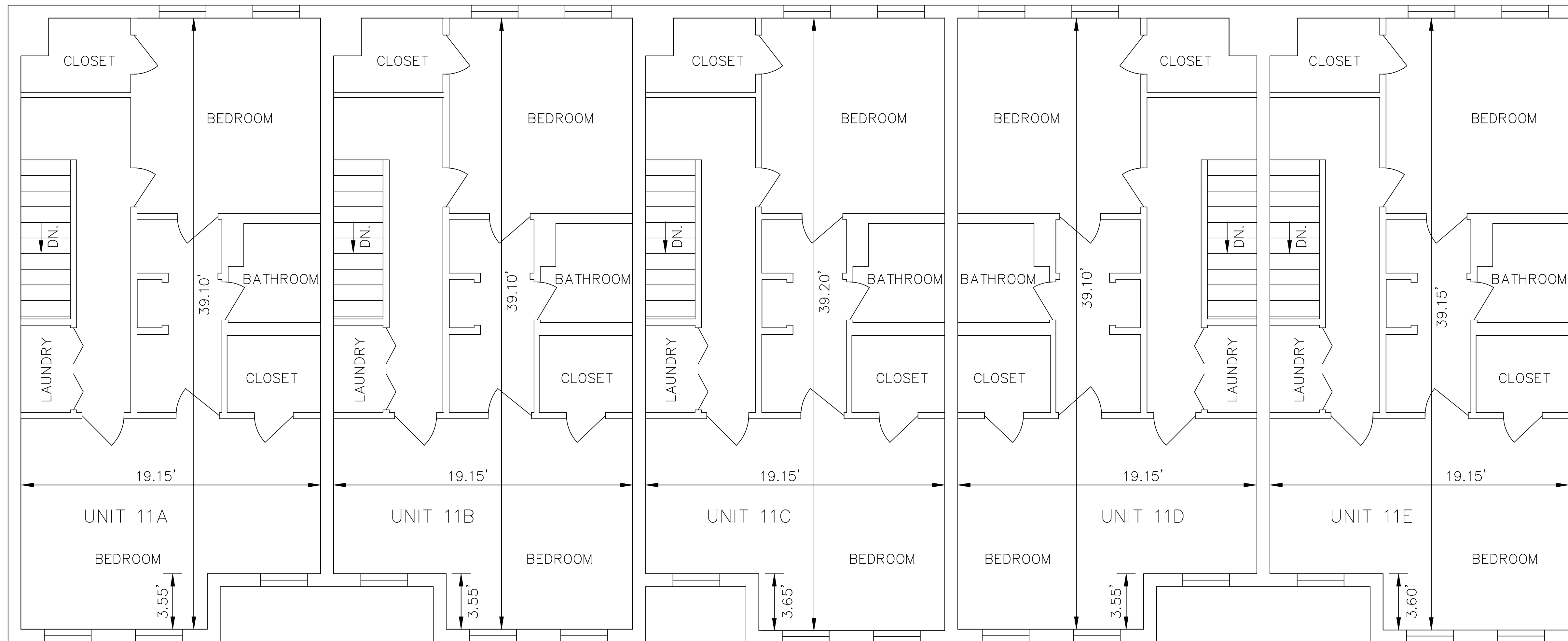
SITE PLAN
 BUILDING #11 UNITS 11A-11E INCLUSIVE
 #9, #11, #13, #15, #17 COATES LANE
 CARRINGTON ESTATES
 HAVERHILL, MASSACHUSETTS
 AS DRAWN FOR
 BRADY SULLIVAN HAVERHILL, LLC
 670 COMMERCIAL STREET-SUITE 303
 MANCHESTER, NH 03101

DATE: DECEMBER 1, 2010
 SCALE: AS NOTED



MERRIMACK ENGINEERING SERVICES
 66 PARK STREET
 ANDOVER, MASSACHUSETTS 01810

STEPHEN E. STAPINSKI, R.L.S. 12/1/10
 DATE



THIRD FLOOR
 1/4" = 1'-0"

Y:\R14\DWG\9125-01\CONDOS\9125-01.dwg 12/1/10

FOR REGISTRY USE

"I HEREBY CERTIFY THAT THE WITHIN FLOOR PLANS FULLY AND ACCURATELY DEPICT THE LOCATION, UNIT NUMBERS AND DIMENSIONS OF THE UNITS OF THE CARRINGTON ESTATES CONDOMINIUM DEPICTED HEREON AS BUILT"
 THIS PLAN CONFORMS TO THE RULES AND REGULATIONS OF THE REGISTRY OF DEEDS.

STEPHEN E. STAPINSKI, R.L.S. 12/1/10
 DATE

SITE PLAN
 BUILDING #11 UNITS 11A-11E INCLUSIVE
 #9, #11, #13, #15, #17 COATES LANE
 CARRINGTON ESTATES
 HAVERHILL, MASSACHUSETTS
 AS DRAWN FOR
 BRADY SULLIVAN HAVERHILL, LLC
 670 COMMERCIAL STREET-SUITE 303
 MANCHESTER, NH 03101

DATE: DECEMBER 1, 2010
 SCALE: AS NOTED

MERRIMACK ENGINEERING SERVICES
 66 PARK STREET
 ANDOVER, MASSACHUSETTS 01810 SHEET 3 OF 3