



Brady Sullivan Properties  
670 N. Commercial Street  
Manchester, nh 03101  
603.622.6223

Notice:  
This drawing is the property of Brady Sullivan Properties. The use, re-use or reproduction of this drawing for any purpose whatsoever without an expressed written agreement between BSP and the user is prohibited.  
Rights to use the information on this sheet are not transferred until payment has been received for services rendered. Any rights so granted are non-transferable to other parties without the prior expressed written consent of BSP.

© 2015 Brady Sullivan Properties

Owner  
**BRADY SULLIVAN PROPERTIES**

Project  
**AMERICAN WIRE**

413 CENTRAL AVE  
PAWTUCKET, RI

Seals  
0%

Issues	
Date	Description

Revisions		
No.	Date	Description

Drawing Title  
**STAND ALONE**

**2,600 RSF**

Issue Date: \_\_\_\_\_ Issue Date: \_\_\_\_\_

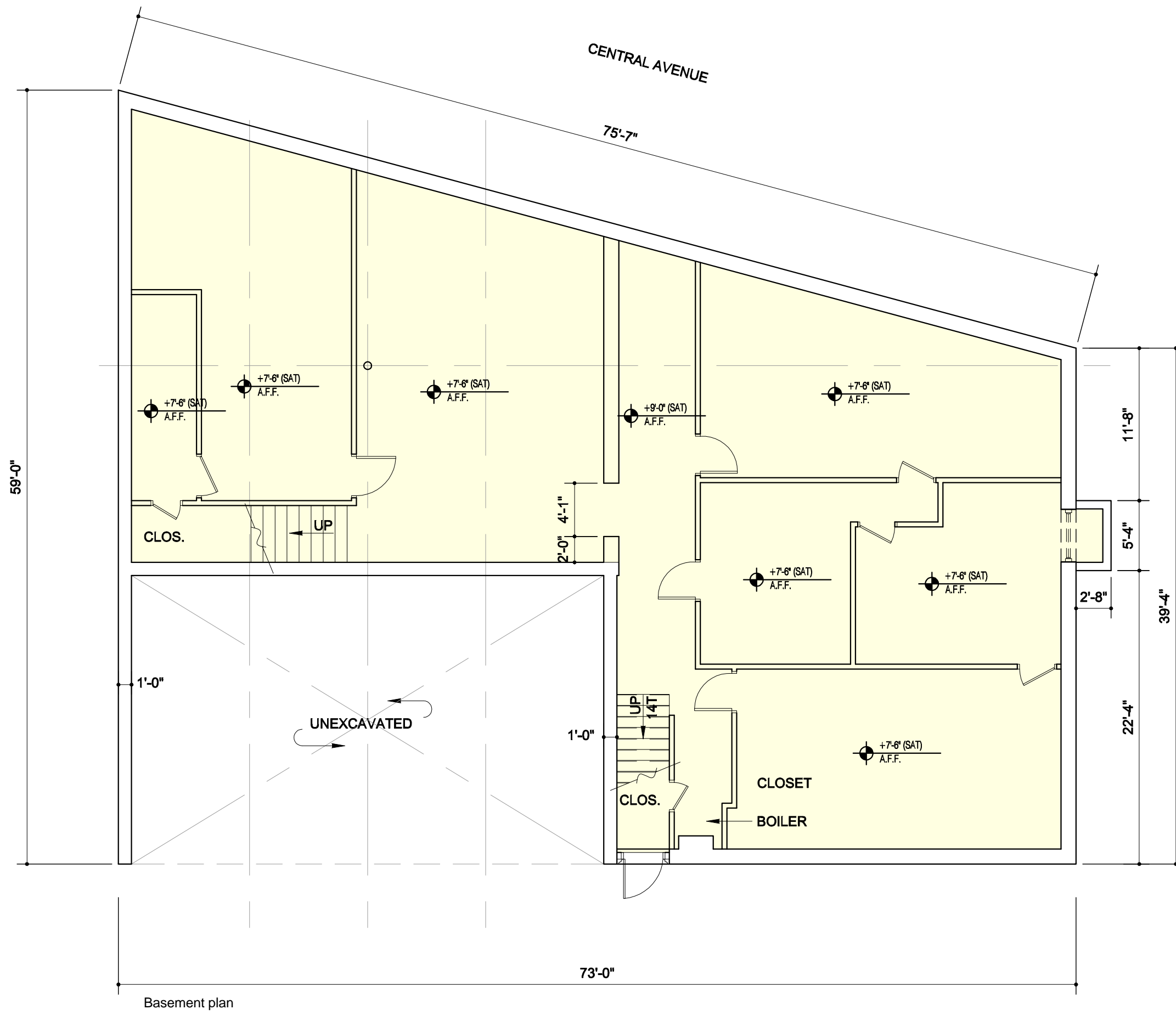
Project No: \_\_\_\_\_ Project Number: \_\_\_\_\_ Scale: 1/8" = 1'-0"

Project Manager: \_\_\_\_\_ Production Leader: \_\_\_\_\_

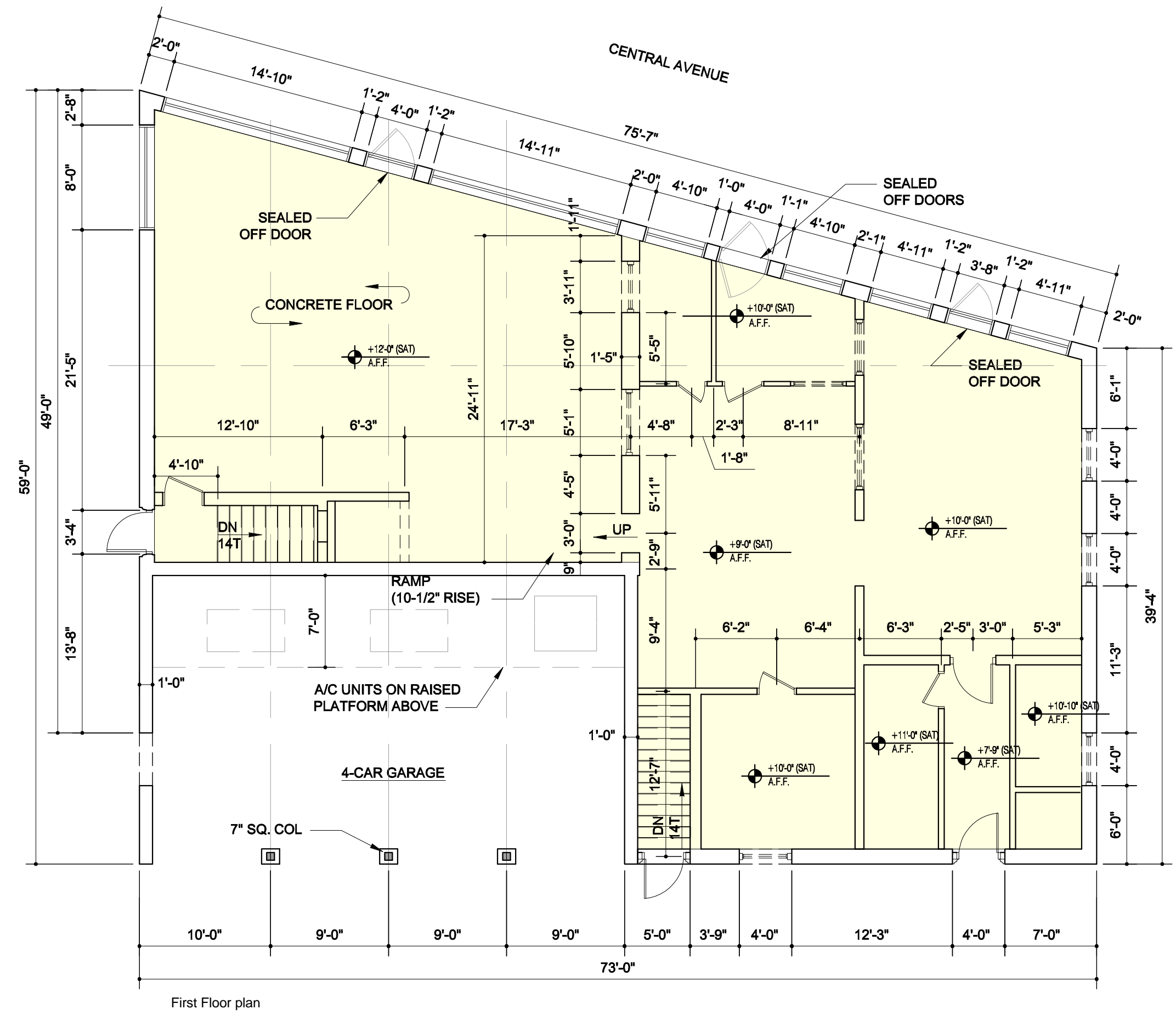
Project Architect: \_\_\_\_\_ Peer Reviewer: \_\_\_\_\_

Drawing Number

**A1.10**



1 STAND ALONE BUILDING  
1/8" = 1'-0"



First Floor plan

DISCLAIMER: ALL BUILDOUT IS BASED ON BRADY SULLIVAN PROPERTIES "CONSTRUCTION STANDARDS". BRADY SULLIVAN PROPERTIES RESERVES THE RIGHT TO ISSUE A CHANGE ORDER FOR ADDITIONAL WORK NOT INCLUDED IN DRAWINGS.

5/23/2016 3:41:47 PM



Brady Sullivan Properties  
670 N. Commercial Street  
Manchester, nh 03101  
603.622.6223

Notice:  
This drawing is the property of Brady Sullivan Properties. The use, re-use or reproduction of this drawing for any purpose whatsoever without an expressed written agreement between BSP and the user is prohibited.  
Rights to use the information on this sheet are not transferred until payment has been received for services rendered. Any rights so granted are non-transferable to other parties without the prior expressed written consent of BSP.

© 2015 Brady Sullivan Properties

Owner  
**BRADY SULLIVAN PROPERTIES**

Project  
**AMERICAN WIRE**

413 CENTRAL AVE  
PAWTUCKET, RI

Seals  
0%

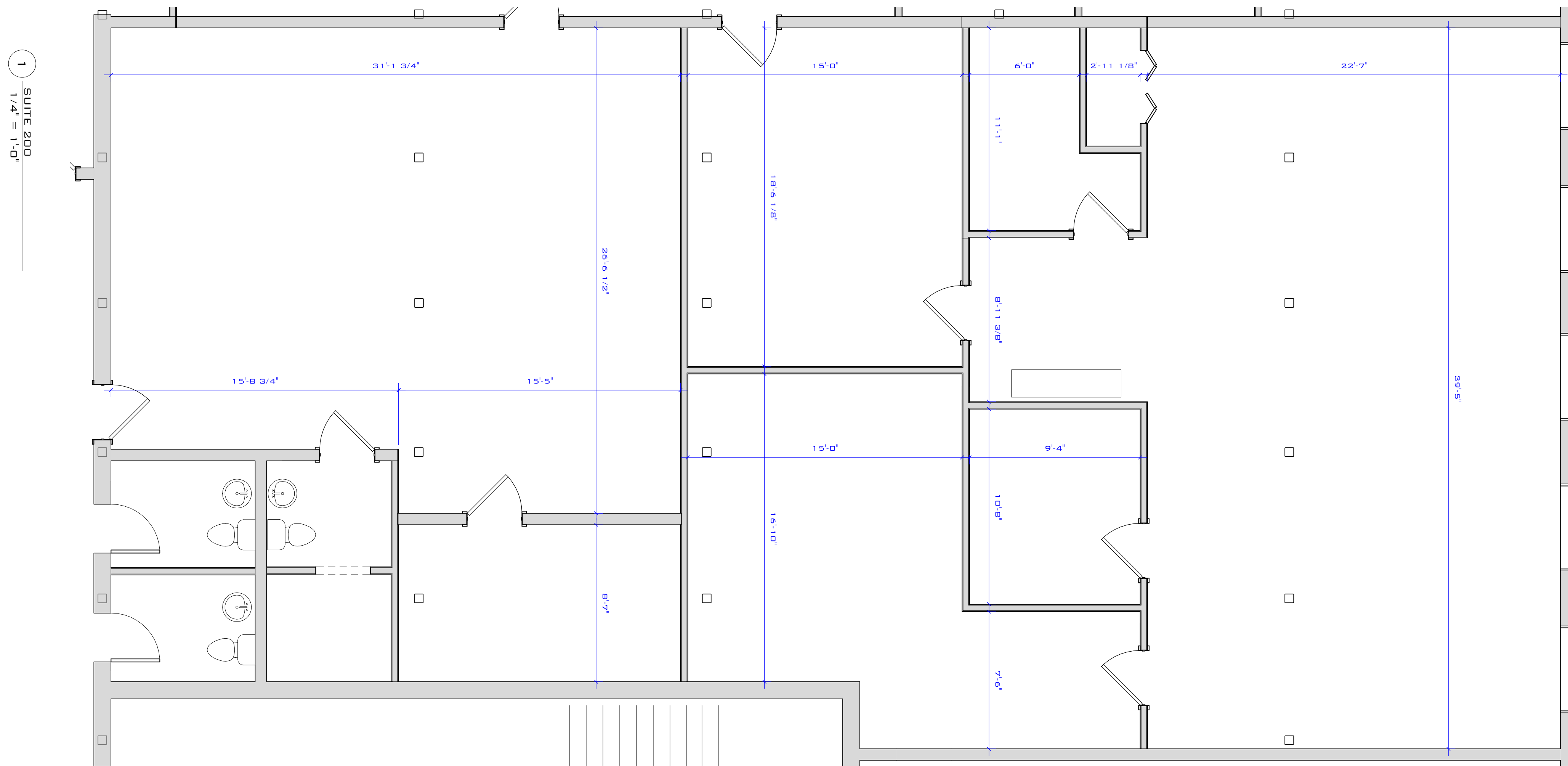
Issues	
Date	Description

Revisions		
No.	Date	Description

Drawing Title  
**SUITE 200**  
**3,212 RSF**

Issue Date:		Issue Date	
Project No:	Project Number	Scale:	1/4" = 1'-0"
Project Manager:		Production Leader:	
Project Architect:		Peer Reviewer:	

Drawing Number  
**A1.8**



**DISCLAIMER:** ALL BUILDOUT IS BASED ON BRADY SULLIVAN PROPERTIES "CONSTRUCTION STANDARDS". BRADY SULLIVAN PROPERTIES RESERVES THE RIGHT TO ISSUE A CHANGE ORDER FOR ADDITIONAL WORK NOT INCLUDED IN DRAWINGS.

5/23/2016 3:32:54 PM



Brady Sullivan Properties  
 670 N. Commercial Street  
 Manchester, nh 03101  
 603.622.6223



Owner  
**BRADY SULLIVAN  
 PROPERTIES**  
 MANCHESTER,  
 NH

Project  
**AMERICAN WIRE**  
 PAWTUCKET, RI

Seals

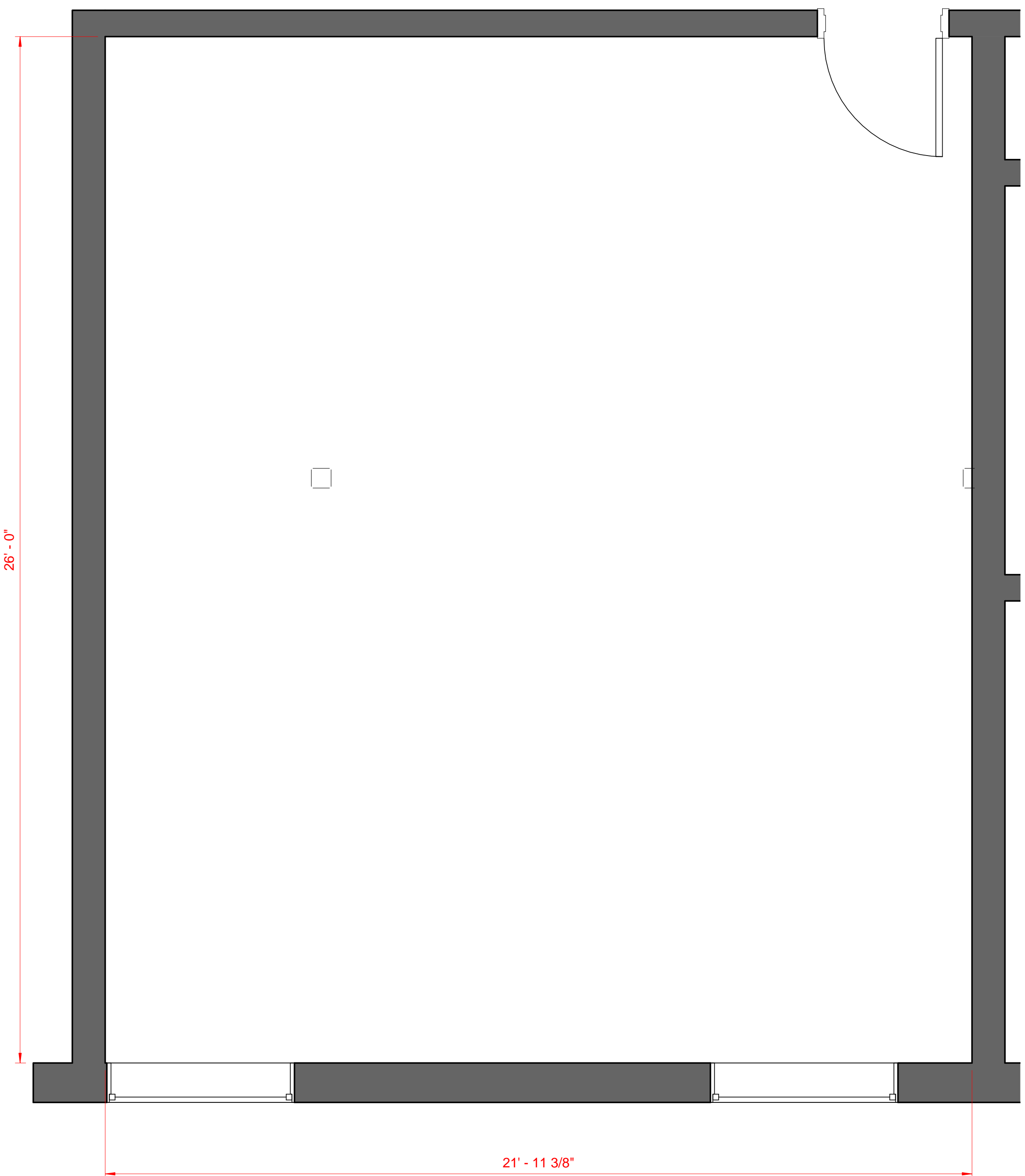
Issues	
Date	Description

Revisions		
No.	Date	Description

Drawing Title  
**SUITE 500A**  
**660 RSF**

Issue Date:	
Project No:	Scale: 1/2" = 1'-0"
Project Manager:	Production Leader:
Project Architect: CL	Peer Reviewer: CL

Drawing Number  
**A0.0**



1 SUITE 500A  
 1/2" = 1'-0"

**DISCLAIMER:** ALL BUILDOUT IS BASED ON BRADY SULLIVAN PROPERTIES "CONSTRUCTION STANDARDS".  
 BRADY SULLIVAN PROPERTIES RESERVES THE RIGHT TO ISSUE A CHANGE ORDER FOR ADDITIONAL WORK  
 NOT INCLUDED IN DRAWINGS.



Brady Sullivan Properties  
670 N. Commercial Street  
Manchester, nh 03101  
603.622.6223



Owner  
**BRADY SULLIVAN  
PROPERTIES**  
MANCHESTER,  
NH

Project  
**AMERICAN WIRE**  
PAWTUCKET, RI

Seals

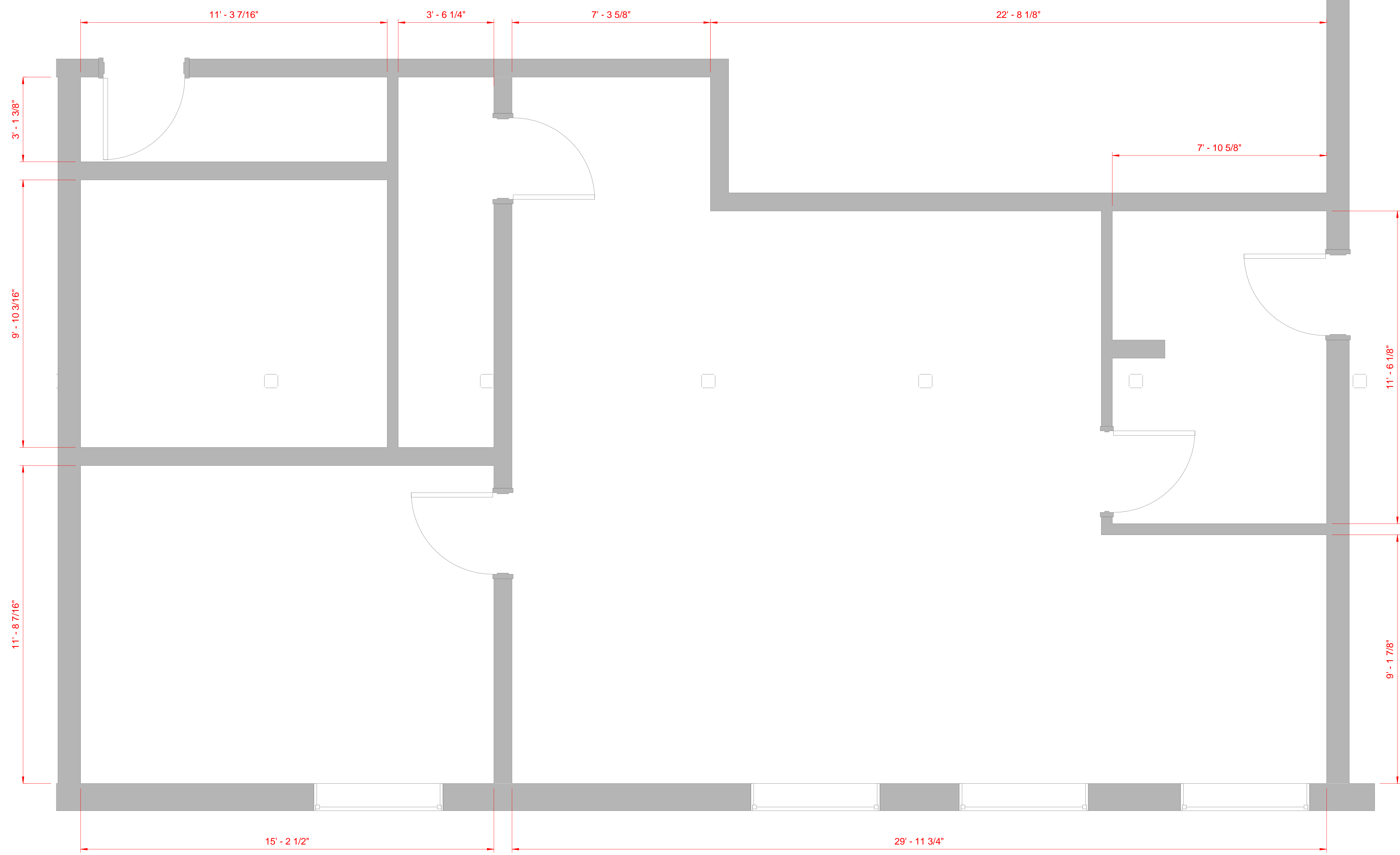
Issues	
Date	Description

Revisions		
No.	Date	Description

Drawing Title  
**SUITE 500B**  
**1,229 RSF**

Issue Date:	
Project No:	Scale: 1/2" = 1'-0"
Project Manager:	Production Leader:
Project Architect: CL	Peer Reviewer: CL

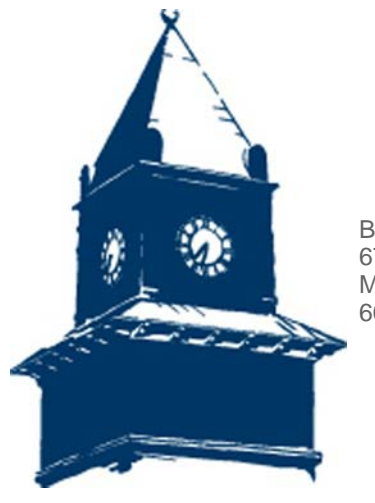
Drawing Number  
**A0.4**



**1 SUITE 500B**  
1/2" = 1'-0"

**DISCLAIMER:** ALL BUILDOUT IS BASED ON BRADY SULLIVAN PROPERTIES "CONSTRUCTION STANDARDS". BRADY SULLIVAN PROPERTIES RESERVES THE RIGHT TO ISSUE A CHANGE ORDER FOR ADDITIONAL WORK NOT INCLUDED IN DRAWINGS.

9/13/2016 4:23:43 PM



Brady Sullivan Properties  
670 N. Commercial Street  
Manchester, nh 03101  
603.622.6223

Notice:  
This drawing is the property of Brady Sullivan Properties. The use, re-use or reproduction of this drawing for any purpose whatsoever without an expressed written agreement between BSP and the user is prohibited.  
Rights to use the information on this sheet are not transferred until payment has been received for services rendered. Any rights so granted are non-transferable to other parties without the prior expressed written consent of BSP.

© 2015 Brady Sullivan Properties

Owner  
**BRADY SULLIVAN  
PROPERTIES**

Project  
**AMERICAN WIRE**

413 CENTRAL AVE  
PAWTUCKET, RI

Seals  
0%

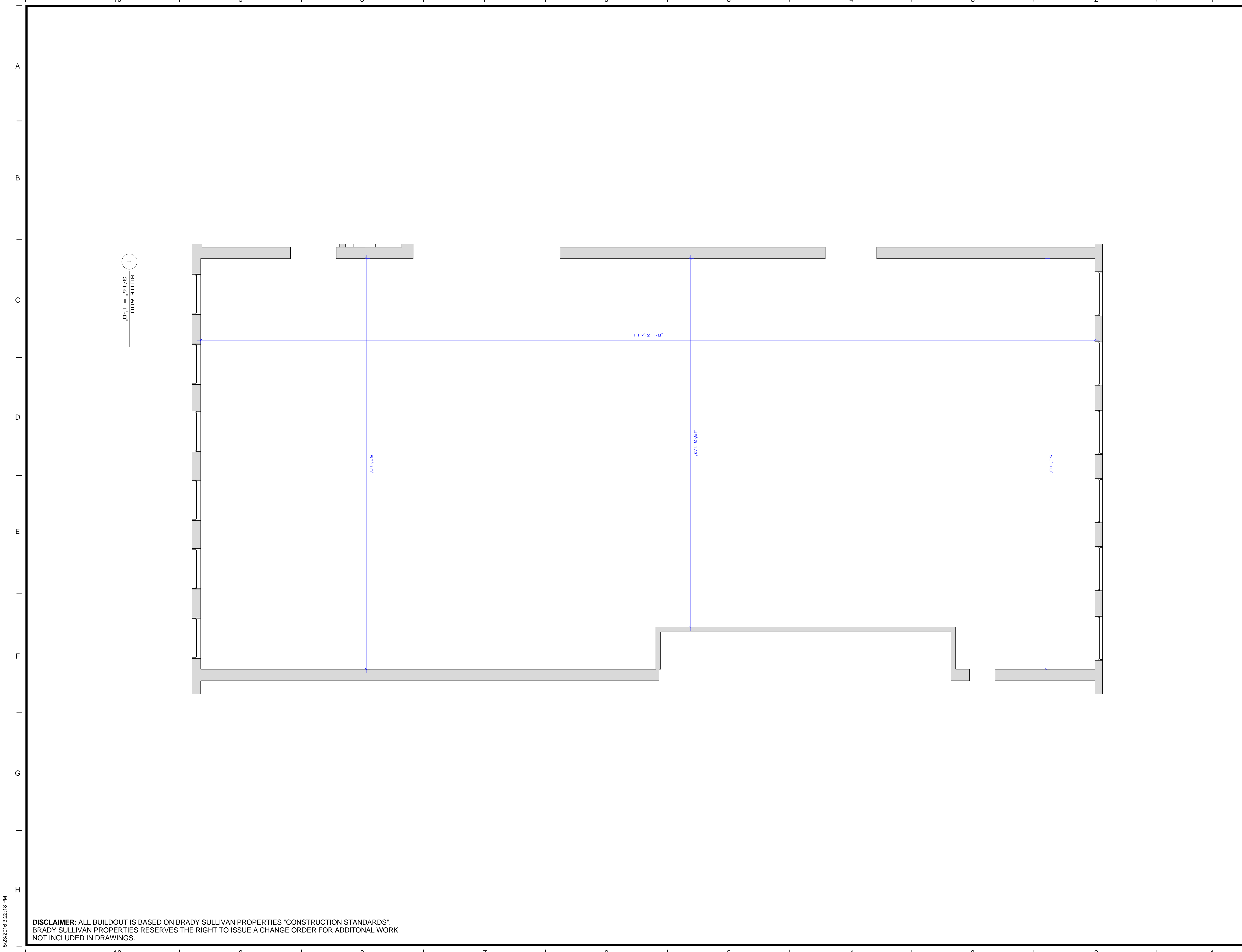
Issues	
Date	Description

Revisions		
No.	Date	Description

Drawing Title  
**SUITE 600**  
**6,410 RSF**

Issue Date:		Issue Date	
Project No:	Project Number	Scale:	3/16" = 1'-0"
Project Manager:		Production Leader:	
Project Architect:		Peer Reviewer:	

Drawing Number  
**A1.6**



1  
SUITE 600  
3/16" = 1'-0"

**DISCLAIMER:** ALL BUILDOUT IS BASED ON BRADY SULLIVAN PROPERTIES "CONSTRUCTION STANDARDS". BRADY SULLIVAN PROPERTIES RESERVES THE RIGHT TO ISSUE A CHANGE ORDER FOR ADDITIONAL WORK NOT INCLUDED IN DRAWINGS.

5/23/2016 3:22:18 PM



Brady Sullivan Properties  
670 N. Commercial Street  
Manchester, nh 03101  
603.622.6223

Notice:  
This drawing is the property of Brady Sullivan Properties. The use, re-use or reproduction of this drawing for any purpose whatsoever without an expressed written agreement between BSP and the user is prohibited.  
Rights to use the information on this sheet are not transferred until payment has been received for services rendered. Any rights so granted are non-transferable to other parties without the prior expressed written consent of BSP.

© 2015 Brady Sullivan Properties

Owner  
**BRADY SULLIVAN PROPERTIES**

Project  
**AMERICAN WIRE**

413 CENTRAL AVE  
PAWTUCKET, RI

Seals  
0%

Issues	
Date	Description

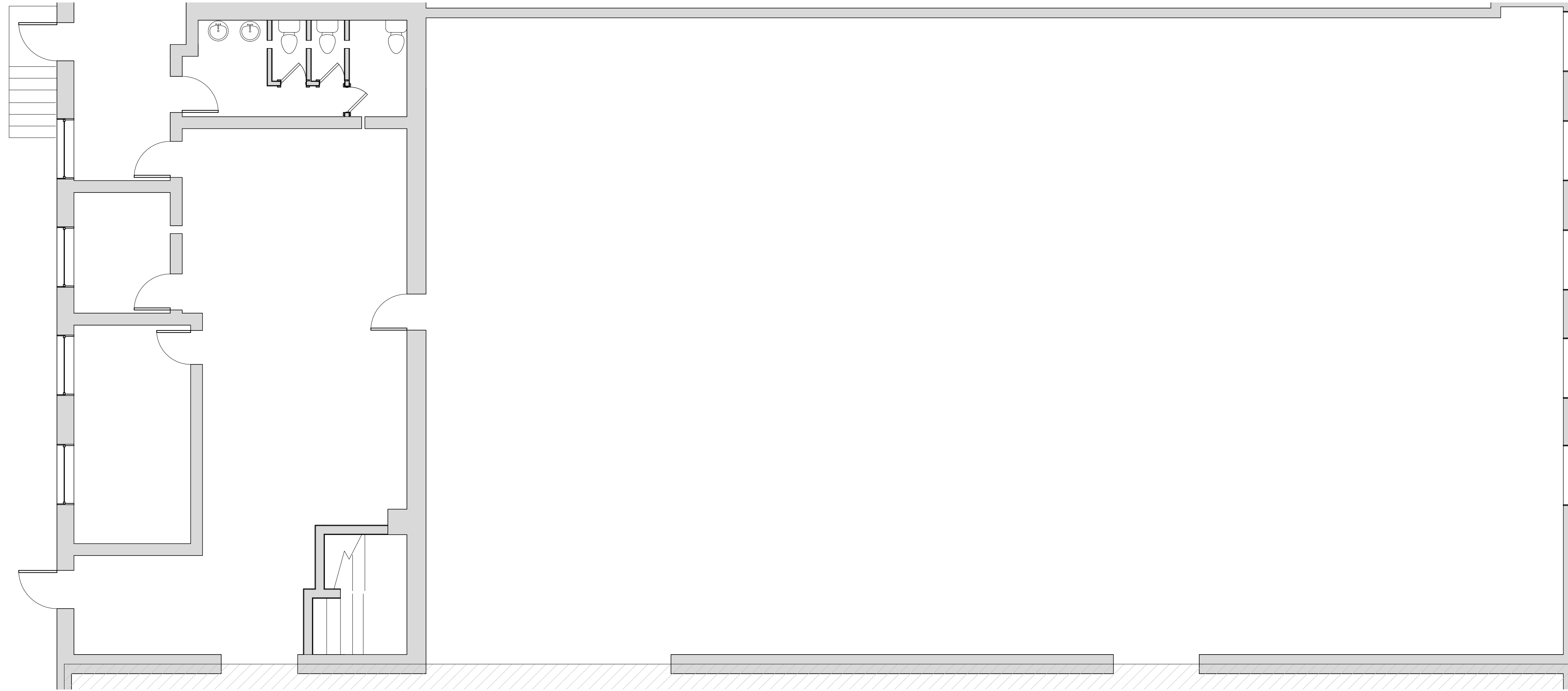
Revisions		
No.	Date	Description

Drawing Title  
**SUITE 700**  
**5,813 RSF**

Issue Date:	Issue Date
Project No:	Project Number
Scale:	3/16" = 1'-0"
Project Manager:	Production Leader:
Project Architect:	Peer Reviewer:

Drawing Number  
**A1.5**

1 SUITE 700  
3/16" = 1'-0"



**DISCLAIMER:** ALL BUILDOUT IS BASED ON BRADY SULLIVAN PROPERTIES "CONSTRUCTION STANDARDS". BRADY SULLIVAN PROPERTIES RESERVES THE RIGHT TO ISSUE A CHANGE ORDER FOR ADDITIONAL WORK NOT INCLUDED IN DRAWINGS.

5/23/2016 3:18:08 PM



Brady Sullivan Properties  
670 N. Commercial Street  
Manchester, nh 03101  
603.622.6223

Notice:  
This drawing is the property of Brady Sullivan Properties. The use, re-use or reproduction of this drawing for any purpose whatsoever without an expressed written agreement between BSP and the user is prohibited.  
Rights to use the information on this sheet are not transferred until payment has been received for services rendered. Any rights so granted are non-transferable to other parties without the prior expressed written consent of BSP.

© 2015 Brady Sullivan Properties

Owner

**BRADY SULLIVAN  
PROPERTIES**

Project

**AMERICAN WIRE**

413 CENTRAL AVE  
PAWTUCKET, RI

Seals

0%

Issues

Date	Description

Revisions

No.	Date	Description

Drawing Title

**SUITE 900**

**10,573 RSF**

Issue Date: Issue Date

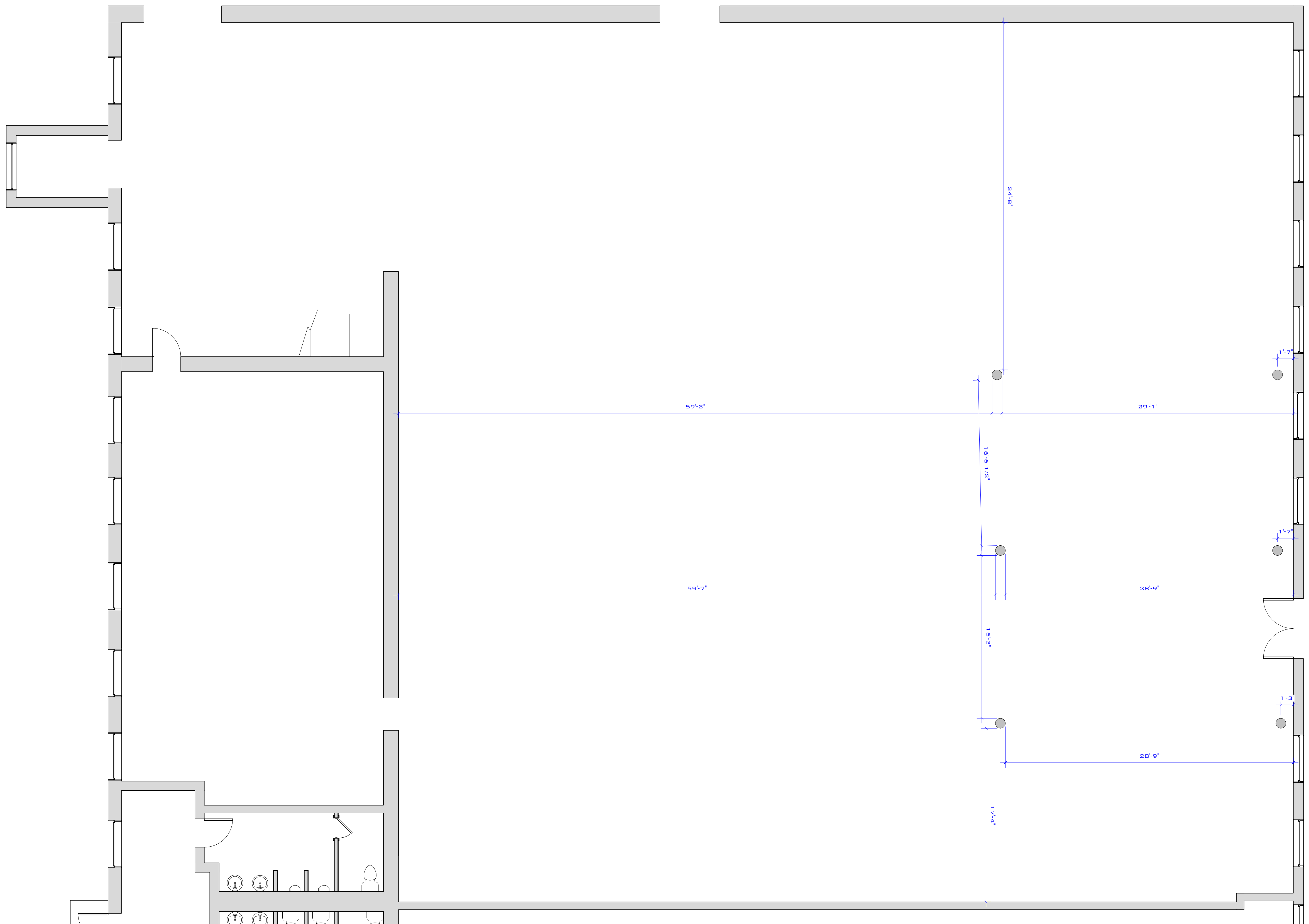
Project No: Project Number Scale: 3/16" = 1'-0"

Project Manager: Production Leader:

Project Architect: Peer Reviewer:

Drawing Number

**A1.3**



1 SUITE 900  
0.1" = 1'-0"

**DISCLAIMER:** ALL BUILDOUT IS BASED ON BRADY SULLIVAN PROPERTIES "CONSTRUCTION STANDARDS". BRADY SULLIVAN PROPERTIES RESERVES THE RIGHT TO ISSUE A CHANGE ORDER FOR ADDITIONAL WORK NOT INCLUDED IN DRAWINGS.

5/23/2016 3:15:15 PM