



Brady Sullivan Properties
670 N. Commercial Street
Manchester, nh 03101
603.622.6223

Notice:
This drawing is the property of Brady Sullivan Properties. The use, re-use or reproduction of this drawing for any purpose whatsoever without an expressed written agreement between BSP and the user is prohibited.
Rights to use the information on this sheet are not transferred until payment has been received for services rendered. Any rights so granted are non-transferable to other parties without the prior expressed written consent of BSP.

© 2015 Brady Sullivan Properties

Owner

**BRADY SULLIVAN
PROPERTIES**

Project

AMERICAN WIRE

413 CENTRAL AVE
PAWTUCKET, RI

Seals

0%

Issues

Date	Description

Revisions

No.	Date	Description

Drawing Title

SUITE 200

3,212 RSF

Issue Date:

Issue Date

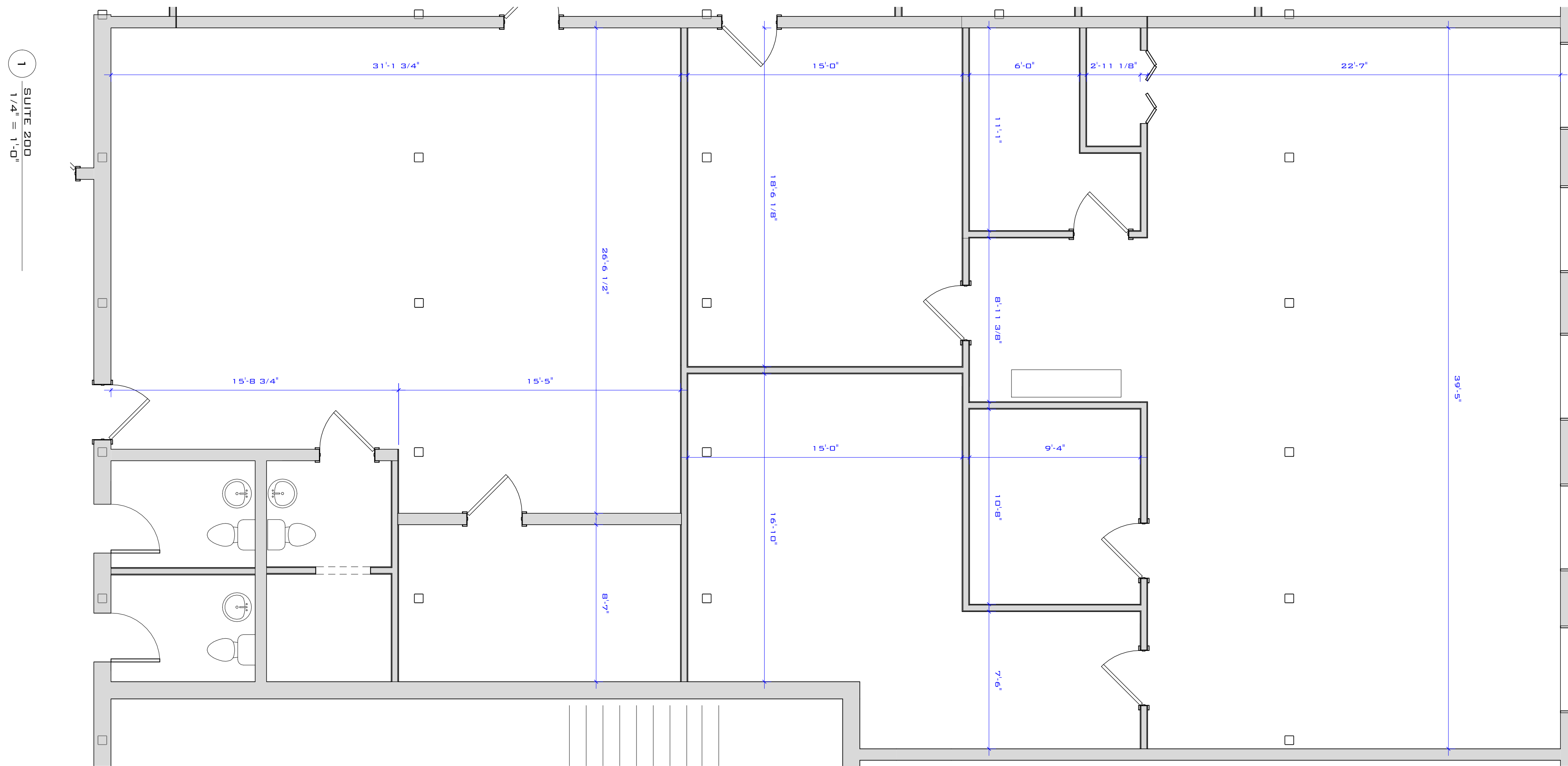
Project No: Project Number Scale: 1/4" = 1'-0"

Project Manager: Production Leader:

Project Architect: Peer Reviewer:

Drawing Number

A1.8



1 SUITE 200
1/4" = 1'-0"

DISCLAIMER: ALL BUILDOUT IS BASED ON BRADY SULLIVAN PROPERTIES "CONSTRUCTION STANDARDS". BRADY SULLIVAN PROPERTIES RESERVES THE RIGHT TO ISSUE A CHANGE ORDER FOR ADDITIONAL WORK NOT INCLUDED IN DRAWINGS.

5/23/2016 3:32:54 PM



Brady Sullivan Properties
 670 N. Commercial Street
 Manchester, nh 03101
 603.622.6223



Owner
**BRADY SULLIVAN
 PROPERTIES**
 MANCHESTER,
 NH

Project
AMERICAN WIRE
 PAWTUCKET, RI

Seals

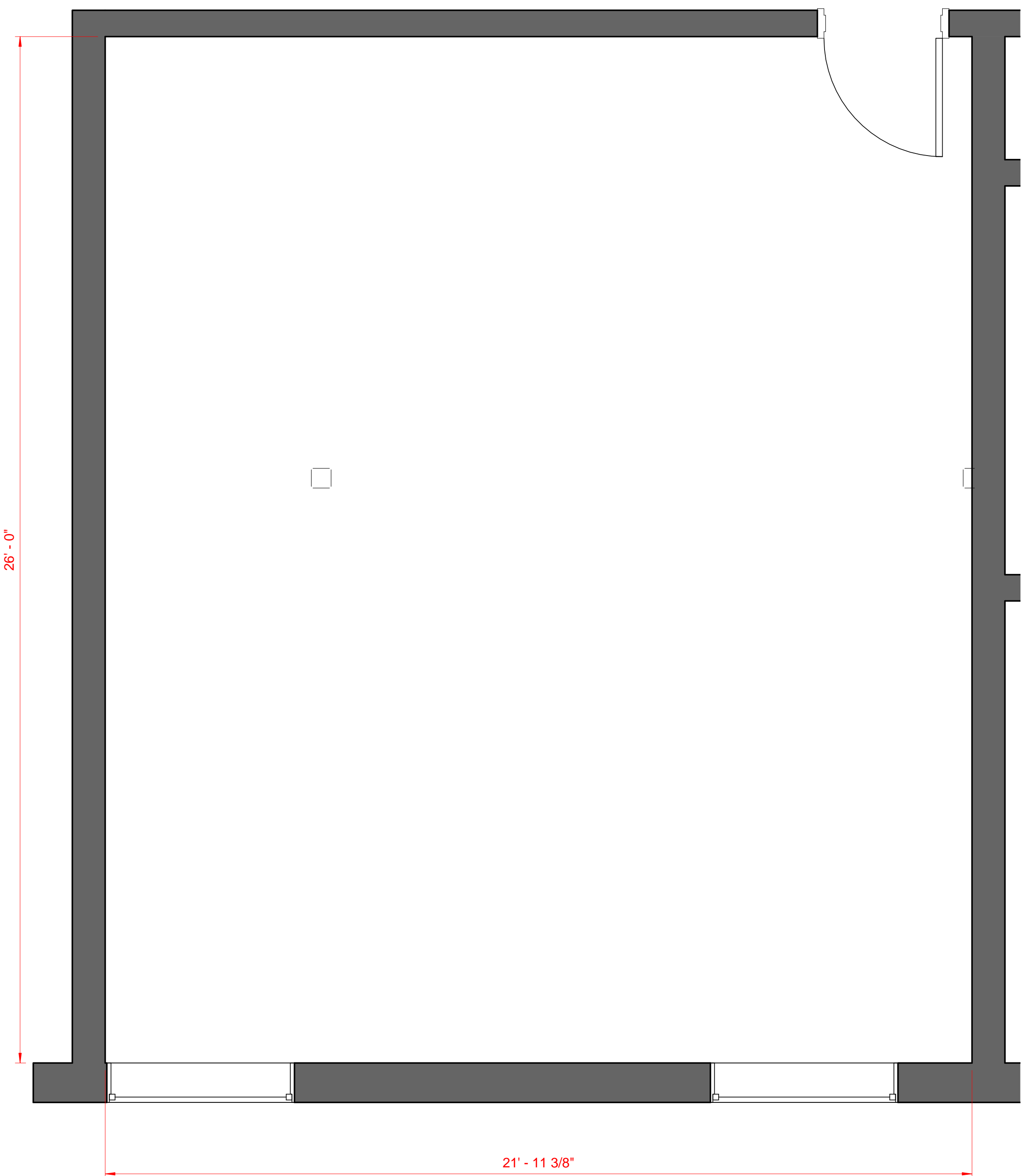
Issues	
Date	Description

Revisions		
No.	Date	Description

Drawing Title
SUITE 500A
660 RSF

Issue Date:	
Project No:	Scale: 1/2" = 1'-0"
Project Manager:	Production Leader:
Project Architect: CL	Peer Reviewer: CL

Drawing Number
A0.0



1 SUITE 500A
 1/2" = 1'-0"

DISCLAIMER: ALL BUILDOUT IS BASED ON BRADY SULLIVAN PROPERTIES "CONSTRUCTION STANDARDS".
 BRADY SULLIVAN PROPERTIES RESERVES THE RIGHT TO ISSUE A CHANGE ORDER FOR ADDITIONAL WORK
 NOT INCLUDED IN DRAWINGS.



Brady Sullivan Properties
670 N. Commercial Street
Manchester, nh 03101
603.622.6223



Owner
**BRADY SULLIVAN
PROPERTIES**
MANCHESTER,
NH

Project
AMERICAN WIRE
PAWTUCKET, RI

Seals

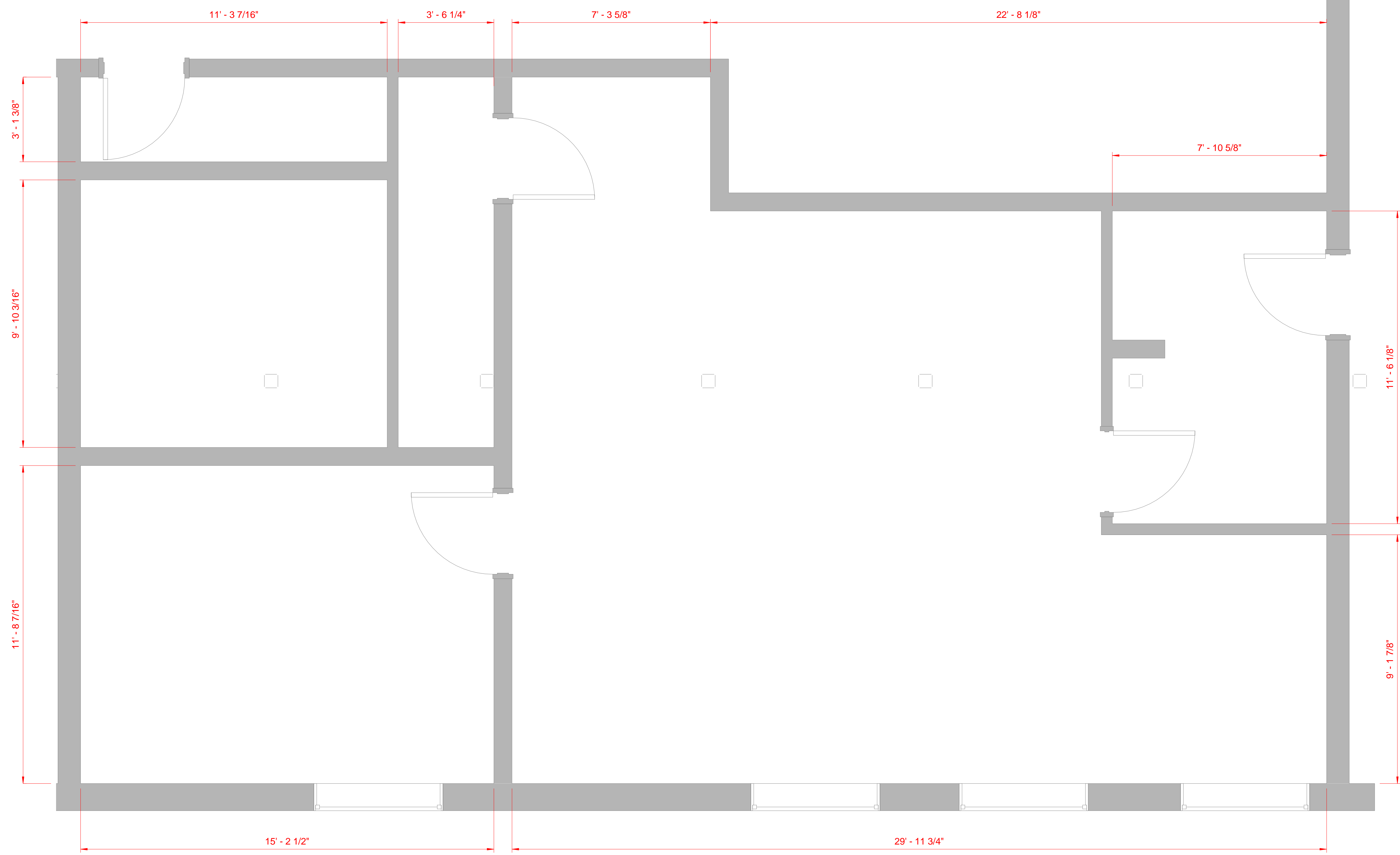
Issues	
Date	Description

Revisions		
No.	Date	Description

Drawing Title
SUITE 500B
1,229 RSF

Issue Date:	
Project No:	Scale: 1/2" = 1'-0"
Project Manager:	Production Leader:
Project Architect: CL	Peer Reviewer: CL

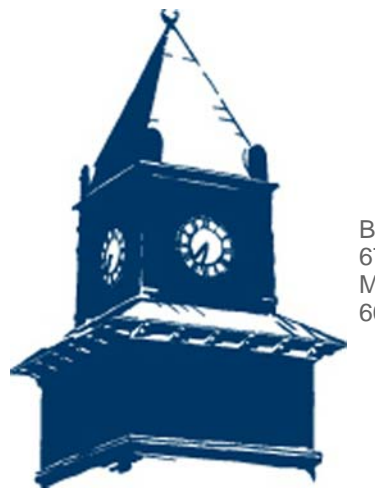
Drawing Number
A0.4



1 SUITE 500B
1/2" = 1'-0"

DISCLAIMER: ALL BUILDOUT IS BASED ON BRADY SULLIVAN PROPERTIES "CONSTRUCTION STANDARDS". BRADY SULLIVAN PROPERTIES RESERVES THE RIGHT TO ISSUE A CHANGE ORDER FOR ADDITIONAL WORK NOT INCLUDED IN DRAWINGS.

9/13/2016 4:23:43 PM



Brady Sullivan Properties
670 N. Commercial Street
Manchester, nh 03101
603.622.6223

Notice:
This drawing is the property of Brady Sullivan Properties. The use, re-use or reproduction of this drawing for any purpose whatsoever without an expressed written agreement between BSP and the user is prohibited.
Rights to use the information on this sheet are not transferred until payment has been received for services rendered. Any rights so granted are non-transferable to other parties without the prior expressed written consent of BSP.

© 2015 Brady Sullivan Properties

Owner

**BRADY SULLIVAN
PROPERTIES**

Project

AMERICAN WIRE

413 CENTRAL AVE
PAWTUCKET, RI

Seals

0%

Issues

Date	Description

Revisions

No.	Date	Description

Drawing Title

SUITE 600

6,410 RSF

Issue Date:

Issue Date

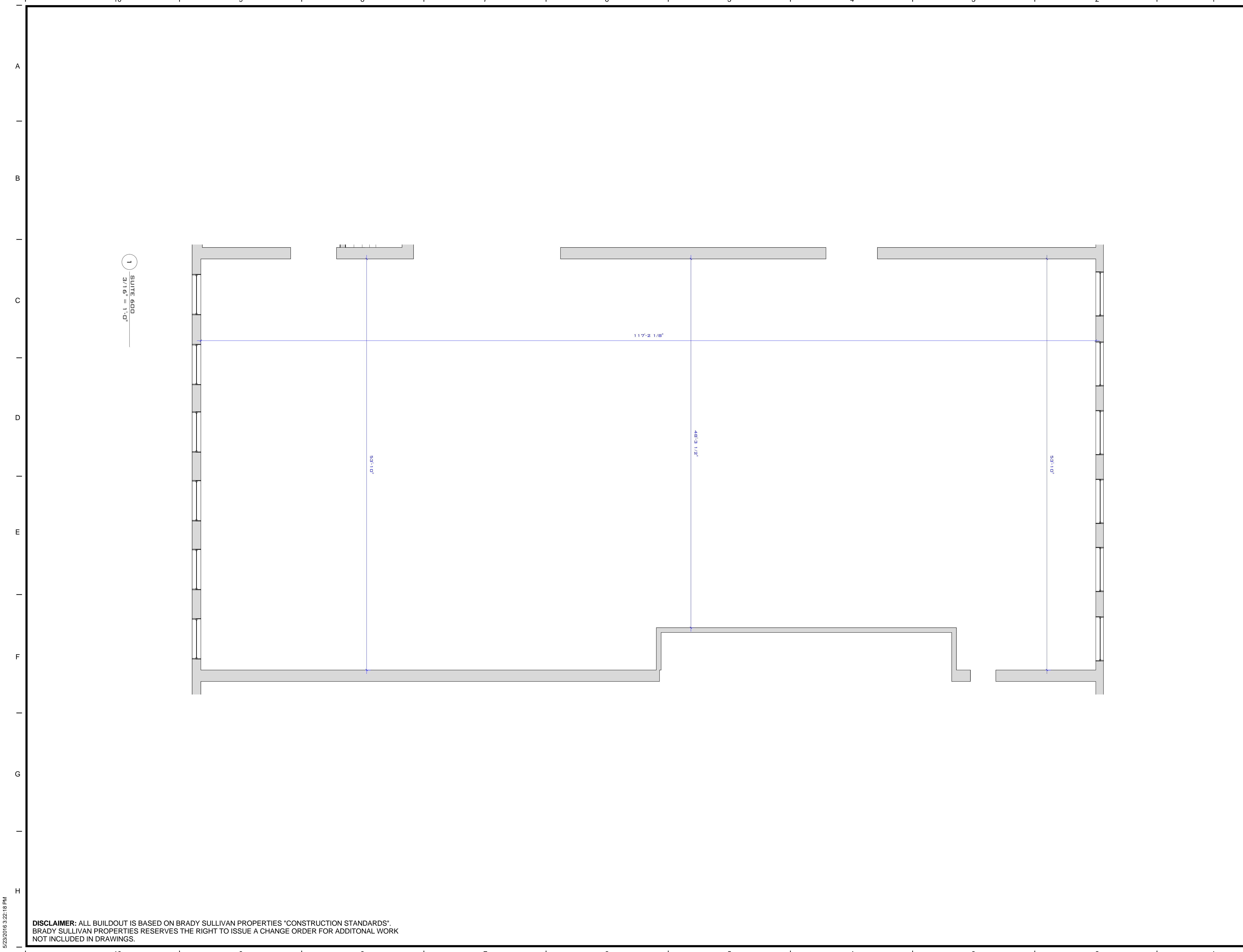
Project No: Project Number Scale: 3/16" = 1'-0"

Project Manager: Production Leader:

Project Architect: Peer Reviewer:

Drawing Number

A1.6



1
SUITE 600
3/16" = 1'-0"

DISCLAIMER: ALL BUILDOUT IS BASED ON BRADY SULLIVAN PROPERTIES "CONSTRUCTION STANDARDS". BRADY SULLIVAN PROPERTIES RESERVES THE RIGHT TO ISSUE A CHANGE ORDER FOR ADDITIONAL WORK NOT INCLUDED IN DRAWINGS.

5/23/2016 3:22:18 PM