



Brady Sullivan Properties
 670 N. Commercial Street
 Manchester, nh 03101
 603.622.6223



Owner
**BRADY SULLIVAN
 PROPERTIES**
 MANCHESTER,
 NH

Project
AMERICAN TOURISTER

91 MAIN ST. WARREN, RI

Seals

Issues	
Date	Description

Revisions		
No.	Date	Description

Drawing Title
**COMMERCIAL
 SPACE**

Issue Date: 11-7-2016

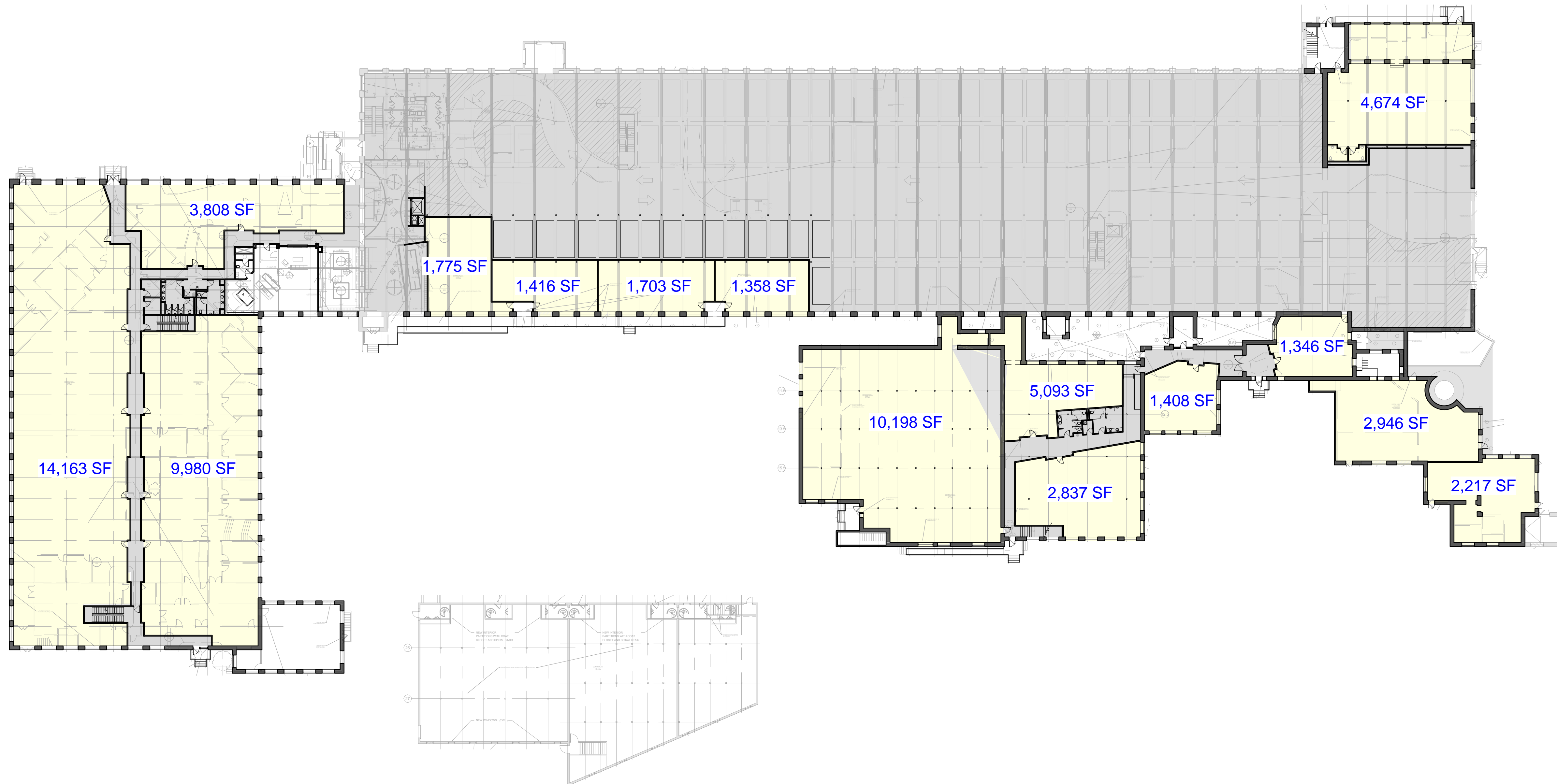
Project No: Scale: 1/32" = 1'-0"

Project Manager: Production Leader:

Project Architect: CL Peer Reviewer: CL

Drawing Number

A0.5



1 COMMERCIAL SUITES

1/32" = 1'-0"

DISCLAIMER: ALL BUILDOUT IS BASED ON BRADY SULLIVAN PROPERTIES "CONSTRUCTION STANDARDS".
 BRADY SULLIVAN PROPERTIES RESERVES THE RIGHT TO ISSUE A CHANGE ORDER FOR ADDITIONAL WORK
 NOT INCLUDED IN DRAWINGS.



Brady Sullivan Properties
670 N. Commercial Street
Manchester, nh 03101
603.622.6223



Owner
**BRADY SULLIVAN
PROPERTIES**
MANCHESTER,
NH

Project
AMERICAN TOURISTER

91 MAIN ST. WARREN, RI

Seals

Issues	
Date	Description

Revisions		
No.	Date	Description

Drawing Title
**COMMERCIAL
SUITES SECTION
A**

Issue Date: 11-7-2016

Project No: Scale: 3/32" = 1'-0"

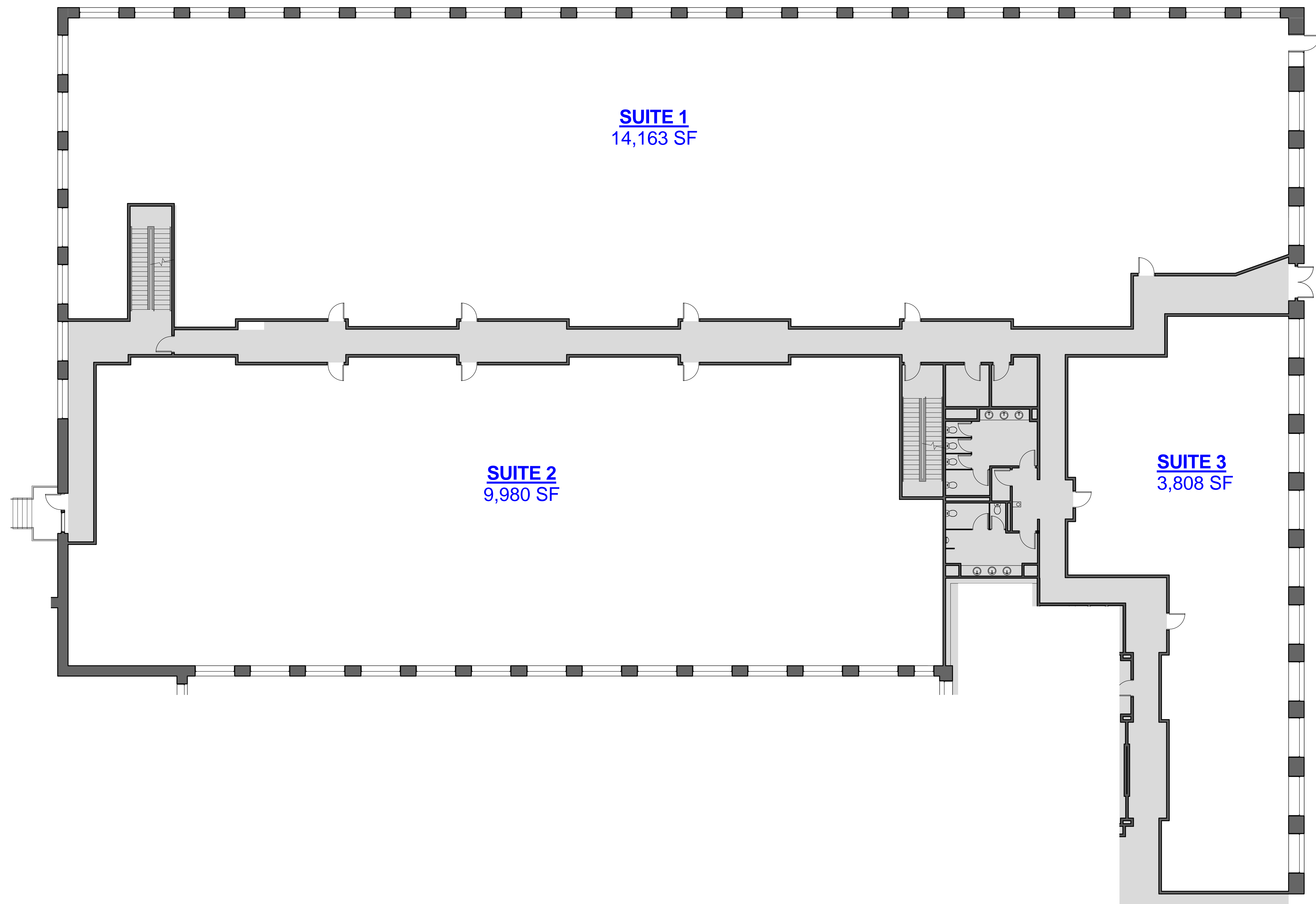
Project Manager: Production Leader:

Project Architect: CL Peer Reviewer: CL

Drawing Number

A0.6

1
3/32" = 1'-0"
COMMERCIAL SUITES - A



SUITE 1
14,163 SF

SUITE 2
9,980 SF

SUITE 3
3,808 SF

DISCLAIMER: ALL BUILDOUT IS BASED ON BRADY SULLIVAN PROPERTIES "CONSTRUCTION STANDARDS".
BRADY SULLIVAN PROPERTIES RESERVES THE RIGHT TO ISSUE A CHANGE ORDER FOR ADDITIONAL WORK
NOT INCLUDED IN DRAWINGS.



Brady Sullivan Properties
 670 N. Commercial Street
 Manchester, nh 03101
 603.622.6223



Owner
**BRADY SULLIVAN
 PROPERTIES**
 MANCHESTER,
 NH

Project
AMERICAN TOURISTER

91 MAIN ST. WARREN, RI

Seals

Issues	
Date	Description

Revisions	
No.	Date

Drawing Title
**COMMERCIAL
 SUITES SECTION
 B**

Issue Date: 11-7-2016

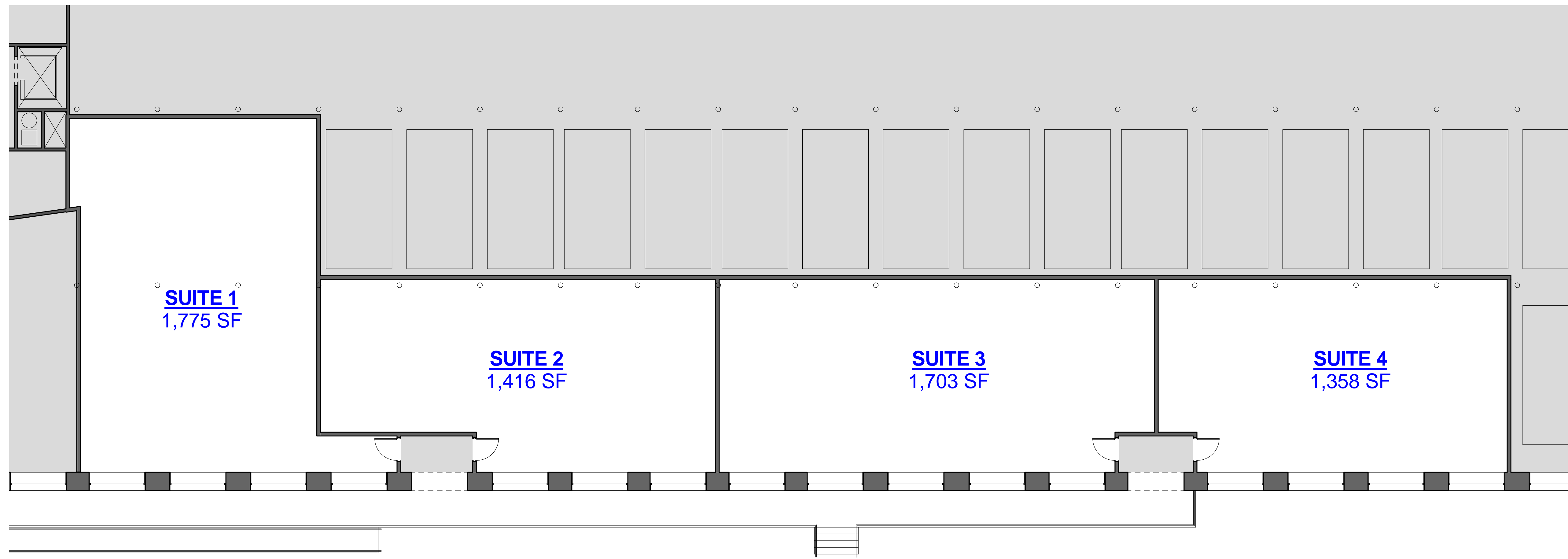
Project No: Scale: 1/8" = 1'-0"

Project Manager: Production Leader:

Project Architect: CL Peer Reviewer: CL

Drawing Number

A0.7



1 COMMERCIAL SUITES - B
 1/8" = 1'-0"

DISCLAIMER: ALL BUILDOUT IS BASED ON BRADY SULLIVAN PROPERTIES "CONSTRUCTION STANDARDS".
 BRADY SULLIVAN PROPERTIES RESERVES THE RIGHT TO ISSUE A CHANGE ORDER FOR ADDITIONAL WORK
 NOT INCLUDED IN DRAWINGS.

11/8/2016 10:35:02 AM



Brady Sullivan Properties
670 N. Commercial Street
Manchester, nh 03101
603.622.6223



Owner
**BRADY SULLIVAN
PROPERTIES**
MANCHESTER,
NH

Project
AMERICAN TOURISTER

91 MAIN ST. WARREN, RI

Seals

Issues	
Date	Description

Revisions		
No.	Date	Description

Drawing Title
**COMMERCIAL
SUITES SECTION
C**

Issue Date: 11-7-2016

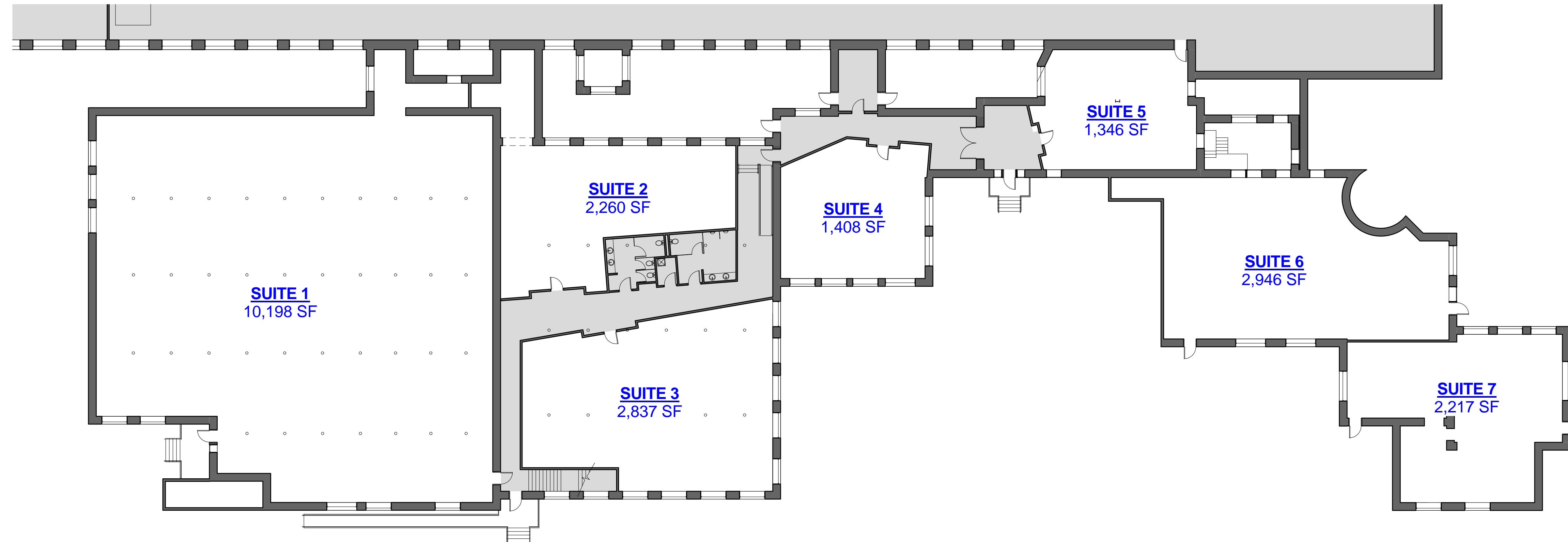
Project No: Scale: 1/16" = 1'-0"

Project Manager: Production Leader:

Project Architect: CL Peer Reviewer: CL

Drawing Number

A0.8



1 COMMERCIAL SUITES - C
1/16" = 1'-0"

DISCLAIMER: ALL BUILDOUT IS BASED ON BRADY SULLIVAN PROPERTIES "CONSTRUCTION STANDARDS".
BRADY SULLIVAN PROPERTIES RESERVES THE RIGHT TO ISSUE A CHANGE ORDER FOR ADDITIONAL WORK
NOT INCLUDED IN DRAWINGS.



Brady Sullivan Properties
 670 N. Commercial Street
 Manchester, nh 03101
 603.622.6223



Owner
**BRADY SULLIVAN
 PROPERTIES**
 MANCHESTER,
 NH

Project
AMERICAN TOURISTER
 91 MAIN ST. WARREN, RI

Seals

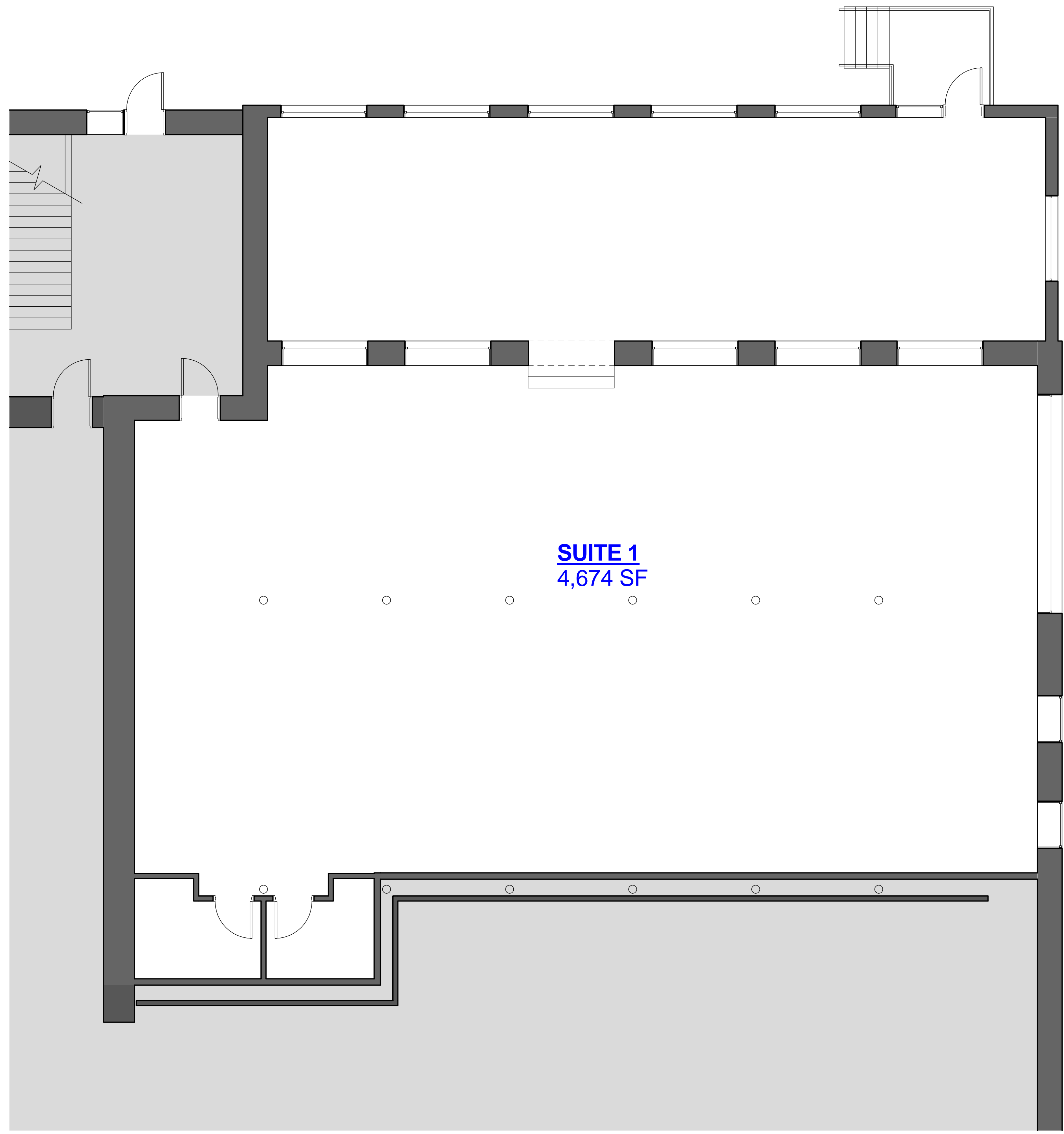
Issues	
Date	Description

Revisions		
No.	Date	Description

Drawing Title
**COMMERCIAL
 SUITES SECTION
 D**

Issue Date:	11-7-2016
Project No:	Scale: 3/16" = 1'-0"
Project Manager:	Production Leader:
Project Architect: CL	Peer Reviewer: CL

Drawing Number
A0.9



1 COMMERCIAL SUITES - D
 3/16" = 1'-0"

DISCLAIMER: ALL BUILDOUT IS BASED ON BRADY SULLIVAN PROPERTIES "CONSTRUCTION STANDARDS".
 BRADY SULLIVAN PROPERTIES RESERVES THE RIGHT TO ISSUE A CHANGE ORDER FOR ADDITIONAL WORK
 NOT INCLUDED IN DRAWINGS.

11/8/2016 10:35:05 AM