



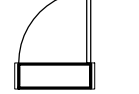

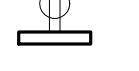
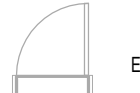
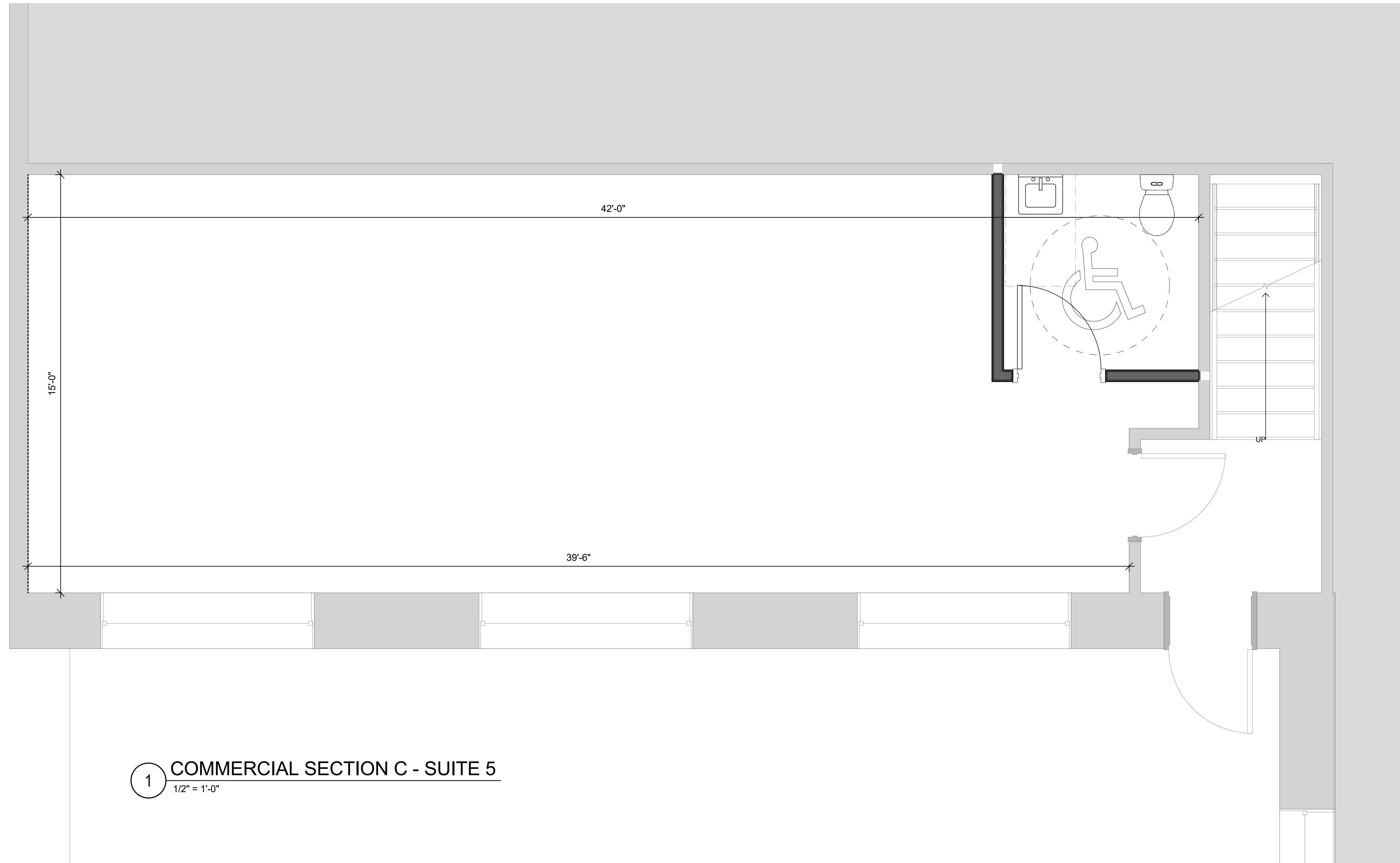


10 9 8 7 6 5 4 3 2 1

A B C D E F G H

LEGEND			
	NOT IN SCOPE		PROPOSED ITEMS (HEAVY LINE WEIGHT)
	EXISTING ITEMS		DEMO WALLS
	NEW DOOR AND FRAME		4" HIGH WALLS
	OUTLET DUPLEX		EXISTING DOOR AND FRAME TO REMAIN



1 COMMERCIAL SECTION C - SUITE 5
1/2" = 1'-0"



Brady Sullivan Properties
670 N. Commercial Street
Manchester, nh 03101
603.622.6223



Owner
**BRADY SULLIVAN
PROPERTIES**
MANCHESTER,
NH

Project
AMERICAN TOURISTER
91 MAIN ST. WARREN, RI

Seals

700 SF
\$1,600/MO

Issues	
Date	Description

Revisions		
No.	Date	Description

Drawing Title
**COMMERCIAL
SECTION C -
SUITE 5**

Issue Date:	3-5-2021
Project No:	Scale: As indicated
Project Manager:	Production Leader:
Project Architect: CL	Peer Reviewer: CL

Drawing Number
A0.8

10 9 8 7 6 5 4 3 2 1

3/5/2021 11:54:23 AM