



Brady Sullivan Properties
670 N. Commercial Street
Manchester, nh 03101
603.622.6223



Owner
Owner

Project
NEW COMMERCIAL BUILDING
0 ISLAND STREET, KEENE NH

Suite 1 - LEASED
Suite 2 - 1,363 SF
Suite 3 - 1,551 SF

Seals
Project Status

Issues	
Date	Description

Revisions		
No.	Date	Description

Drawing Title
PROPOSED SUITE LAYOUT

Issue Date: 3-31-2021

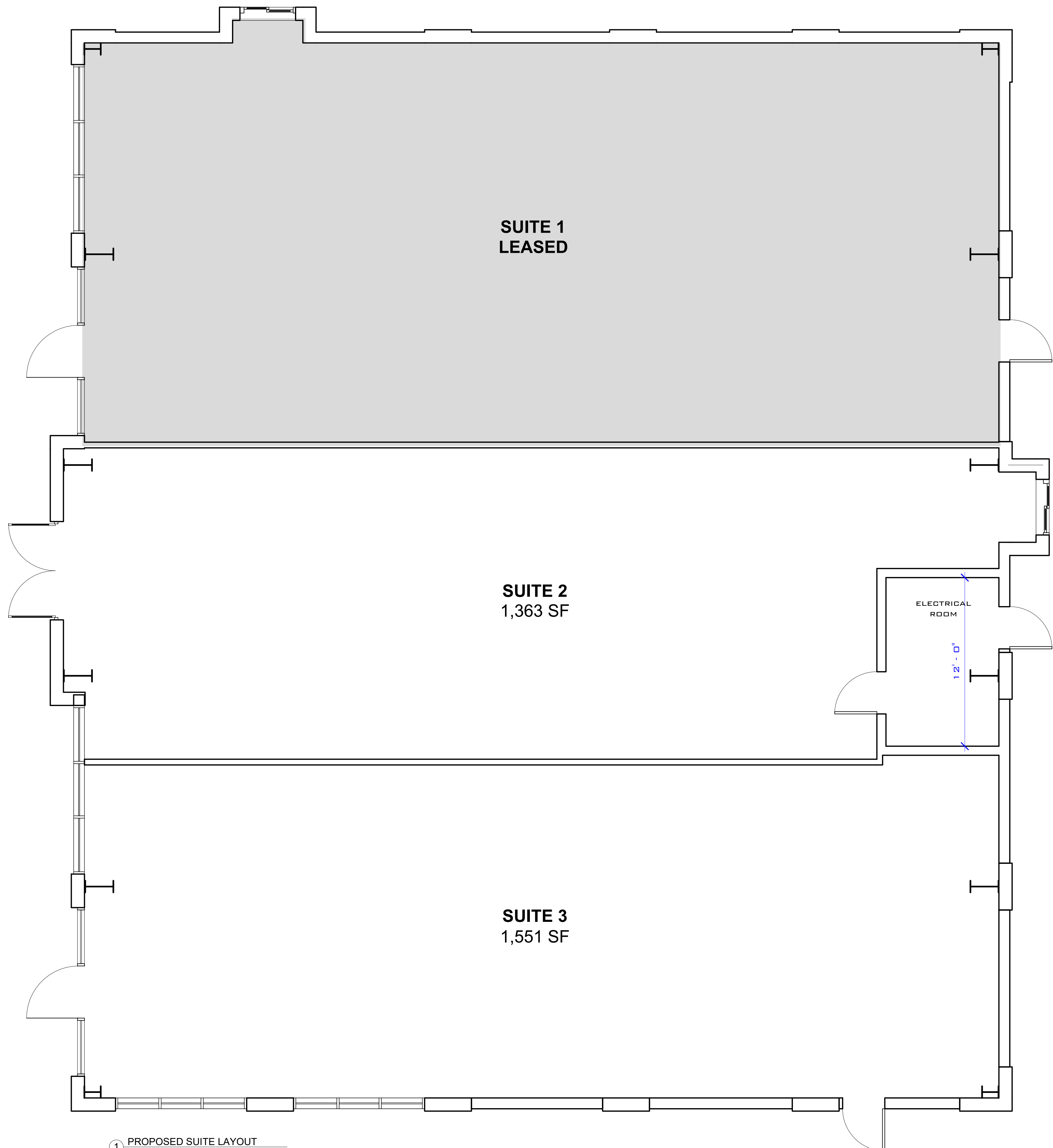
Project No: Project Number Scale: 1/4" = 1'-0"

Project Manager: Production Leader:

Project Architect: Peer Reviewer:

Drawing Number

B1-1



1 PROPOSED SUITE LAYOUT
1/4" = 1'-0"

DISCLAIMER: ALL BUILDOUT IS BASED ON BRADY SULLIVAN PROPERTIES "CONSTRUCTION STANDARDS".
BRADY SULLIVAN PROPERTIES RESERVES THE RIGHT TO ISSUE A CHANGE ORDER FOR ADDITIONAL WORK
NOT INCLUDED IN DRAWINGS.

3/31/2021 12:40:04 PM