



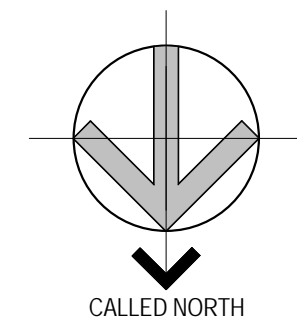
Brady Sullivan Properties
670 N. Commercial Street
Manchester, nh 03101
603.622.6223



Owner
**BRADY SULLIVAN
PROPERTIES**

Project
Pacific Mills Bldg #5

300 Canal Street
Lawrence, MA 01840



Seals
75%

Issues	
Date	Description

Revisions		
No.	Date	Description

Drawing Title
BUILDING 5
6,320 RSF

Issue Date: 04-17-2019

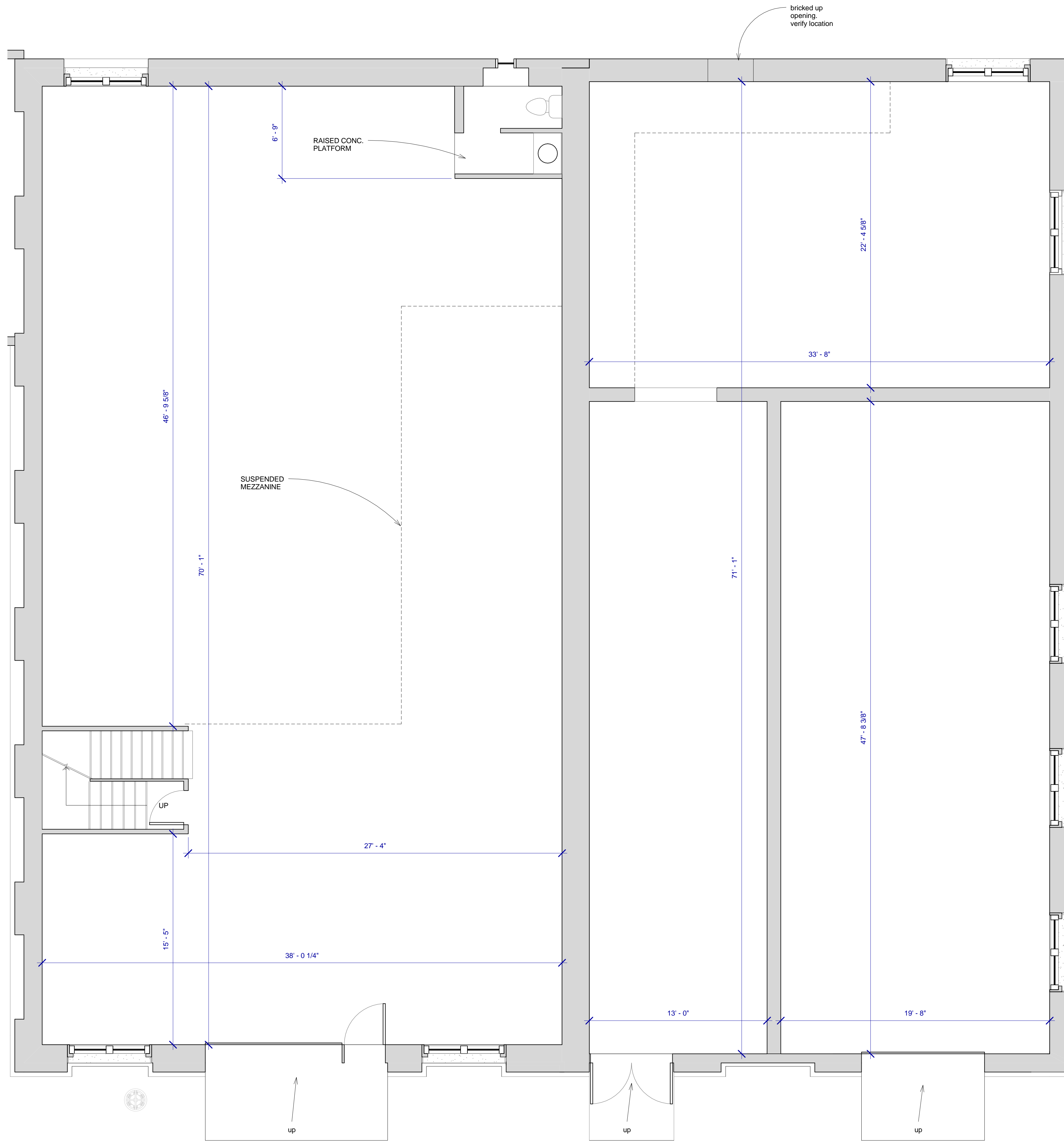
Project No: Project Number Scale: 1/4" = 1'-0"

Project Manager: Production Leader:

Project Architect: Peer Reviewer:

Drawing Number

A5.2



Left Side: 3,906 RSF (Including Mezzanine)

Right Side: 2,414 SF