

10 9 8 7 6 5 4 3 2 1



Brady Sullivan Properties
670 N. Commercial Street
Manchester, nh 03101
603.622.6223



Owner
**BRADY SULLIVAN
PROPERTIES**
MANCHESTER,
NH

Project
35E INDUSTRIAL WAY,
ROCHESTER NH

**35E Industrial
Ground Floor
18,894 RSF**

Seals

Issues	
Date	Description

Revisions		
No.	Date	Description

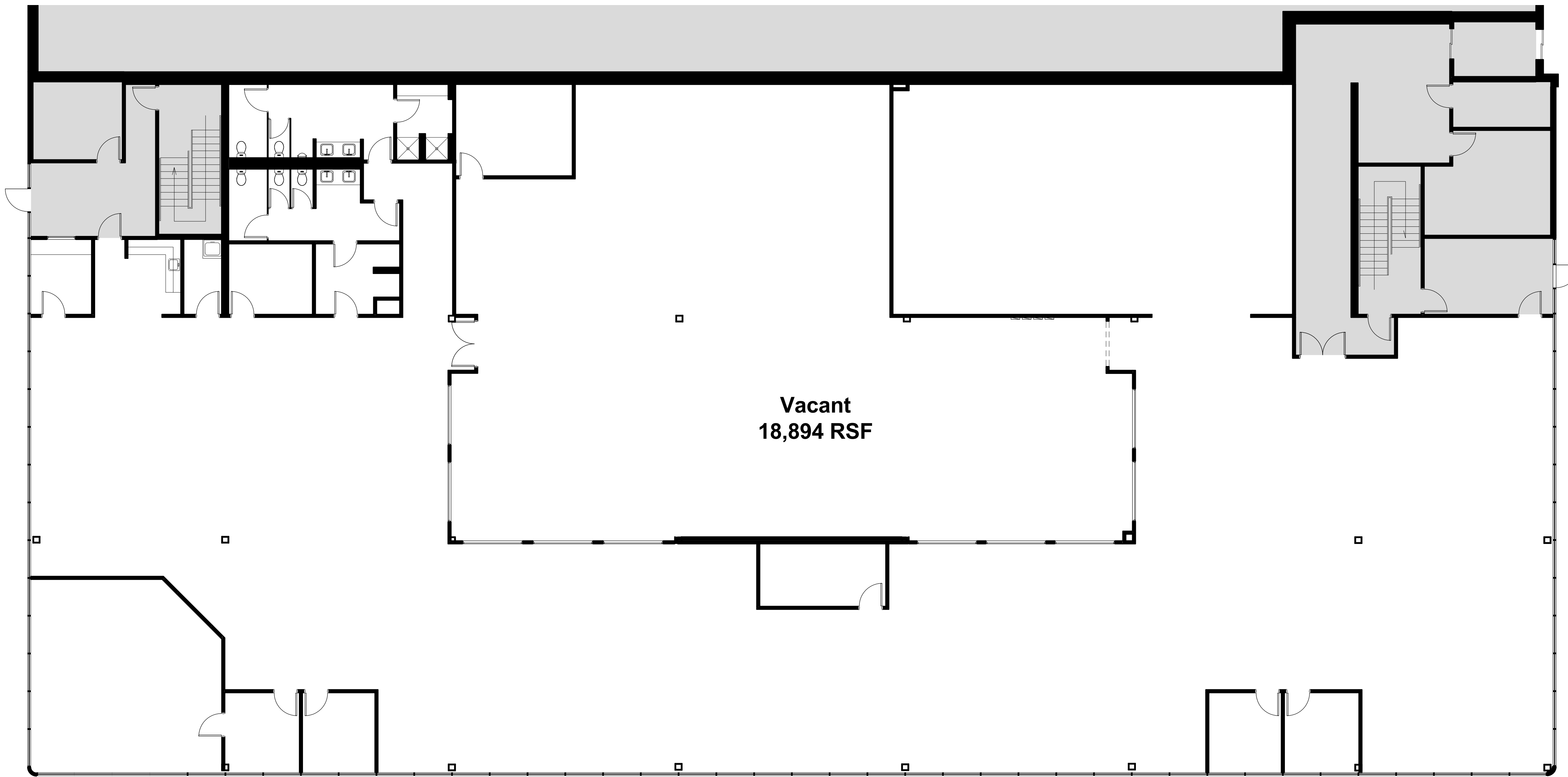
Drawing Title
**GROUND FLOOR
SUITE**

Issue Date:	2-10-2020
Project No:	Scale: 1/8" = 1'-0"
Project Manager:	Production Leader:
Project Architect: CL	Peer Reviewer: CL

Drawing Number
A1.5

LEGEND

	NOT IN SCOPE		PROPOSED ITEMS (HEAVY LINE WEIGHT)
	EXISTING ITEMS		EXISTING DOOR AND FRAME TO REMAIN
	NEW DOOR AND FRAME		DEMO ITEMS



1 GROUND FLOOR SUITE
1/8" = 1'-0"

2/10/2020 8:50:36 AM

10 9 8 7 6 5 4 3 2 1