



Brady Sullivan Properties  
670 N. Commercial Street  
Manchester, nh 03101  
603.622.6223



Owner  
**BRADY SULLIVAN  
PROPERTIES**  
MANCHESTER,  
NH

Project  
**35E INDUSTRIAL WAY,**  
ROCHESTER NH

**35E Industrial  
1st Floor - Suite 1  
13,400 RSF**

Seals

**35E Industrial  
1st Floor - Suite 2  
18,481 RSF**

Issues	
Date	Description

Revisions		
No.	Date	Description

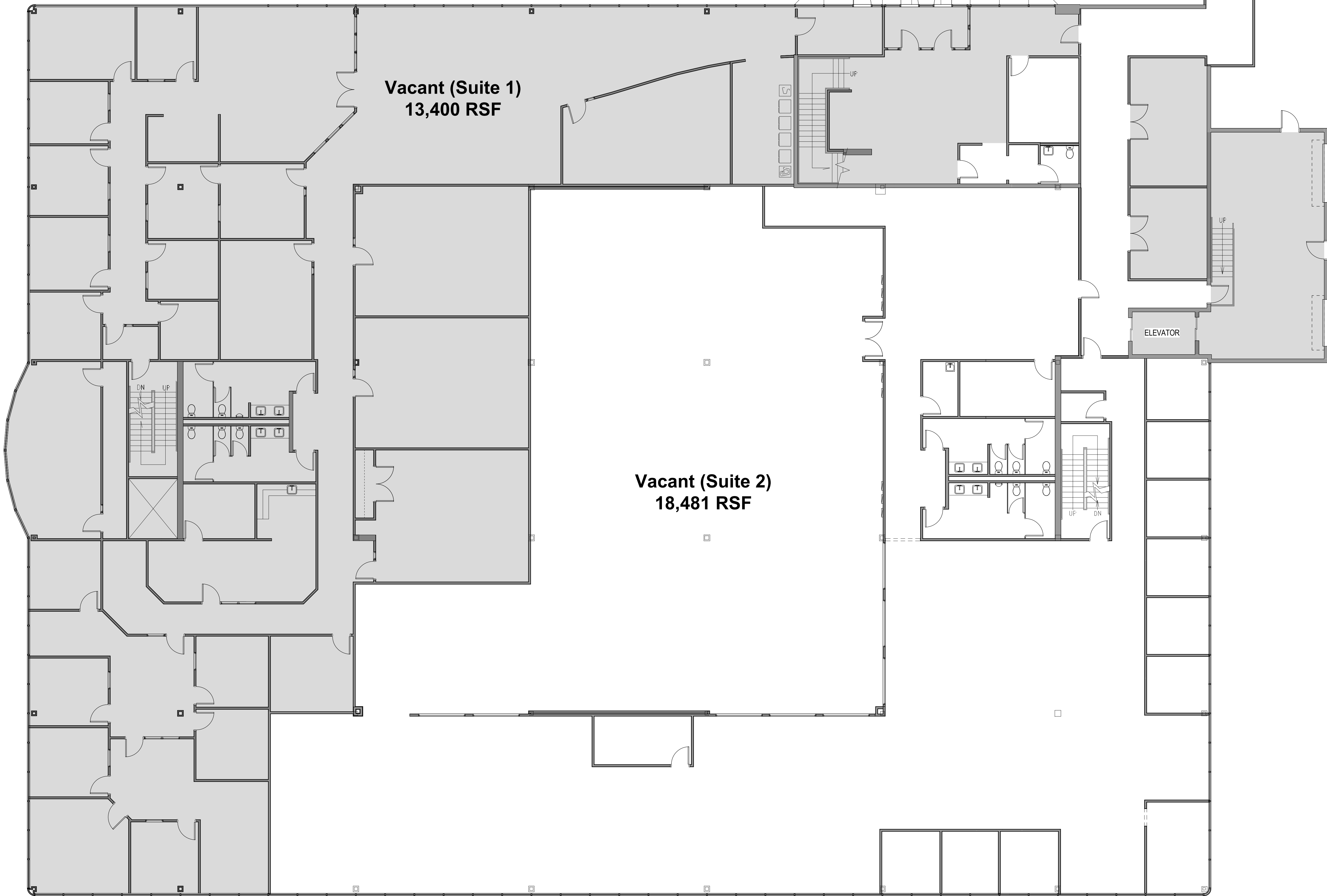
Drawing Title  
**FIRST FLOOR  
PLAN**

Issue Date:	2-10-2020
Project No:	Scale: 1/8" = 1'-0"
Project Manager:	Production Leader:
Project Architect: CL	Peer Reviewer: CL
Drawing Number	

**A1.4**

**LEGEND**

	NOT IN SCOPE		PROPOSED ITEMS (HEAVY LINE WEIGHT)
	EXISTING ITEMS		EXISTING DOOR AND FRAME TO REMAIN
	NEW DOOR AND FRAME		DEMO ITEMS



**1 FIRST FLOOR PLAN**  
1/8" = 1'-0"