



Brady Sullivan Properties  
670 N. Commercial Street  
Manchester, nh 03101  
603.622.6223



Owner  
**BRADY SULLIVAN PROPERTIES**  
MANCHESTER, NH

Project  
**35E INDUSTRIAL WAY,**  
ROCHESTER NH

Suite 201  
18,697 SF

Sheets

Issues

No.	Description

Revisions

No.	Description

Drawing Title

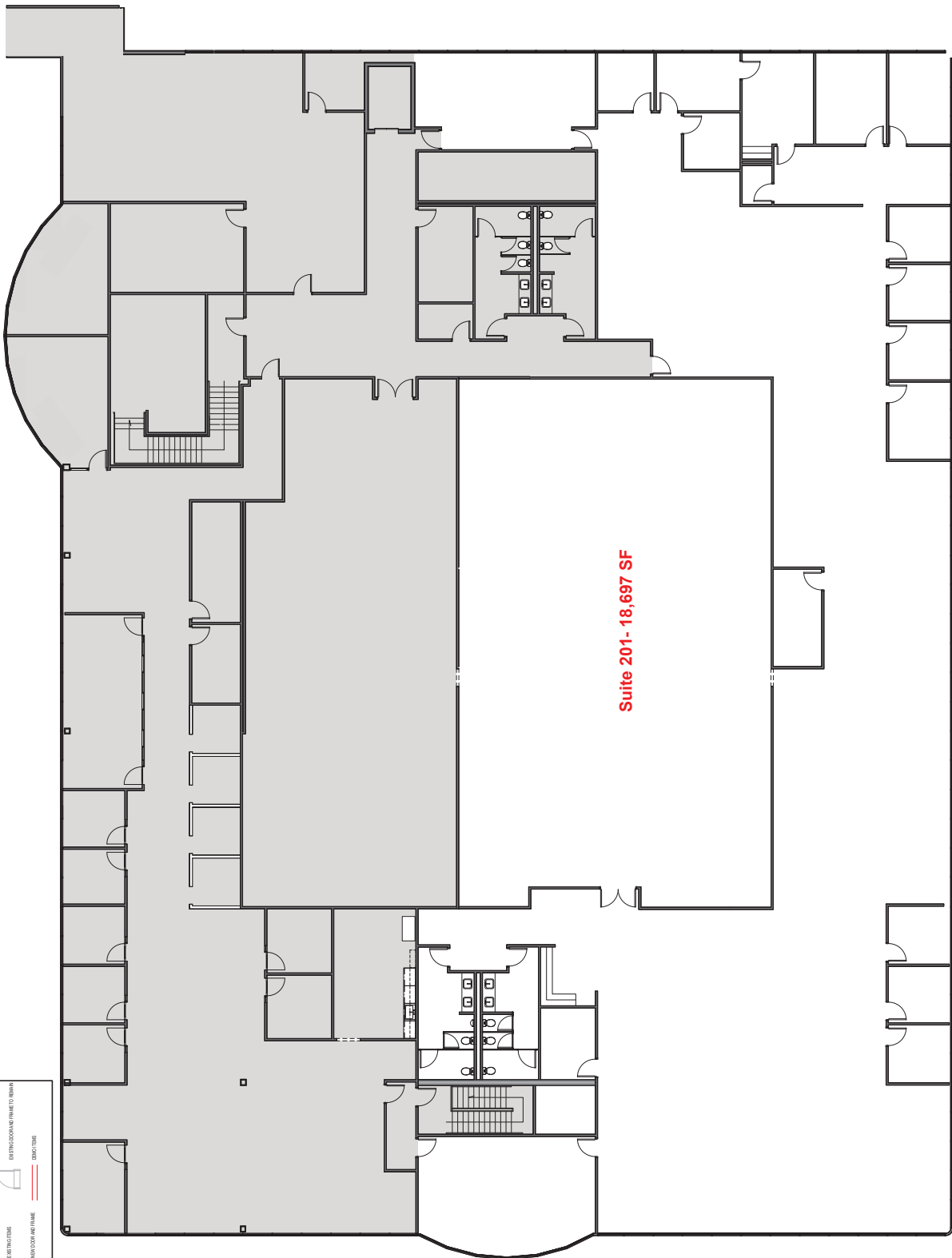
**SECOND FLOOR PLAN**

Issue Date:	10-19-2021	Scale:	1/8" = 1'-0"
Project No:		Project Manager:	
Project Architect:		Client:	

Drawing Number **A1.3**

**LEGEND**

- NOT IN SCOPE (Grey shading)
- PROPOSED THRESHOLD LINE (Dashed line)
- EXISTING THRESHOLD (Solid line)
- EXISTING DOOR (Symbol with arc)
- EXISTING WINDOW (Symbol with double lines)
- EXISTING WINDOW FRAME (Symbol with double lines and dots)
- EXISTING WALL (Solid line)
- EXISTING PARTITION (Solid line with dots)
- EXISTING STAIRS (Symbol with 'U' and 'D')
- EXISTING ELEVATOR (Symbol with 'U' and 'D')
- EXISTING MECHANICAL EQUIPMENT (Symbol with 'M' and 'E')
- EXISTING RESTROOMS (Symbol with 'R')
- EXISTING OFFICE (Symbol with 'O')
- EXISTING CONFERENCE ROOM (Symbol with 'C')
- EXISTING BREAK ROOM (Symbol with 'B')
- EXISTING STORAGE (Symbol with 'S')
- EXISTING ENTRY (Symbol with 'E')



1 SECOND FLOOR PLAN -  
1/8" = 1'-0"