



Brady Sullivan Properties
 670 N. Commercial Street
 Manchester, nh 03101
 603.622.6223



Owner
**BRADY SULLIVAN
 PROPERTIES**
 MANCHESTER,
 NH

Project
35E INDUSTRIAL WAY,
 ROCHESTER NH

**35E Industrial
 1st Floor - Suite 1
 13,400 RSF**

Seals
**35E Industrial
 1st Floor - Suite 2
 19,600 RSF**

Issues	
Date	Description

Revisions		
No.	Date	Description

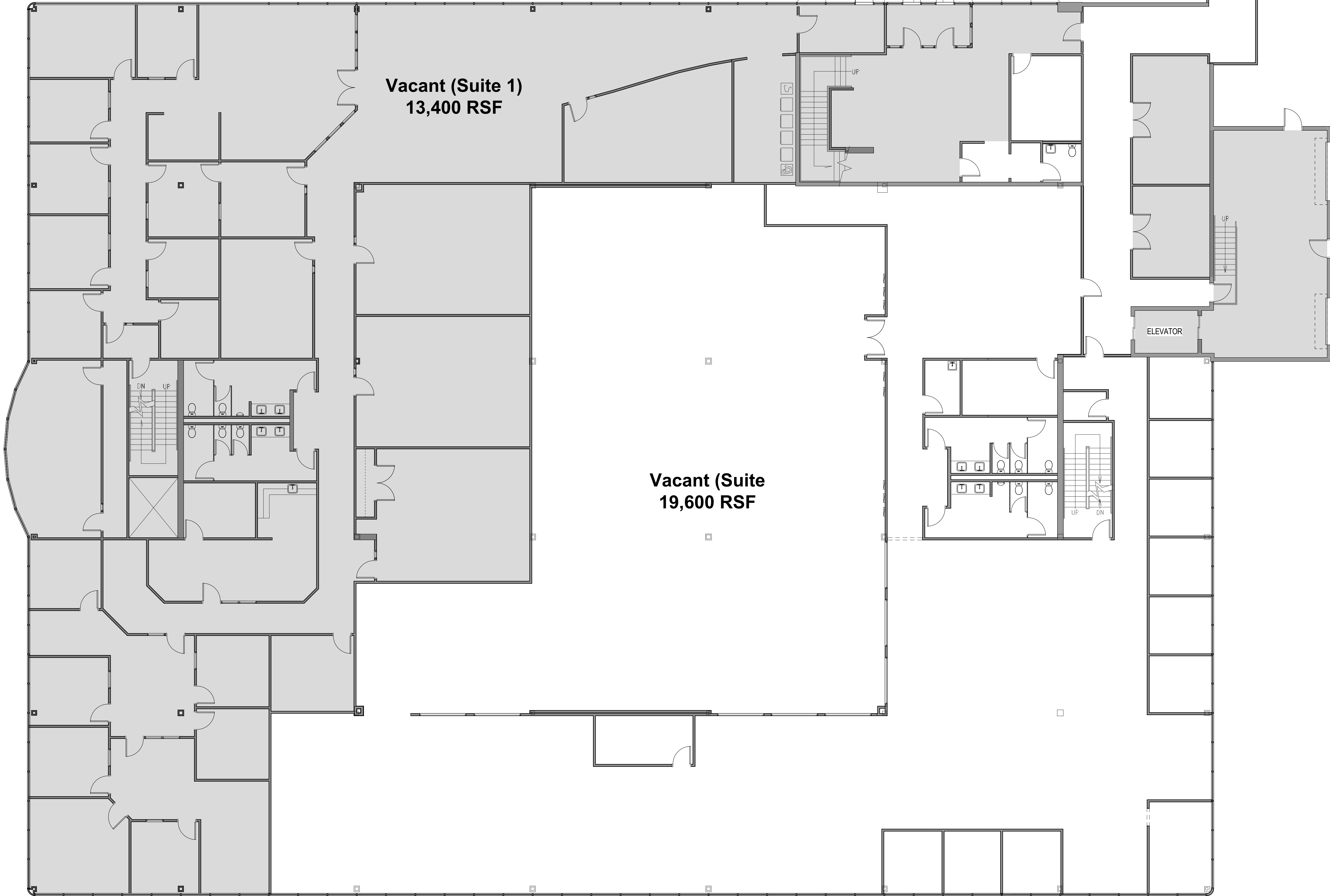
Drawing Title
**FIRST FLOOR
 PLAN**

Issue Date:	2-10-2020
Project No:	Scale: 1/8" = 1'-0"
Project Manager:	Production Leader:
Project Architect: CL	Peer Reviewer: CL
Drawing Number	

A1.4

LEGEND

	NOT IN SCOPE		PROPOSED ITEMS (HEAVY LINE WEIGHT)
	EXISTING ITEMS		EXISTING DOOR AND FRAME TO REMAIN
	NEW DOOR AND FRAME		DEMO ITEMS



1 FIRST FLOOR PLAN
 1/8" = 1'-0"

2/10/2020 8:50:34 AM