



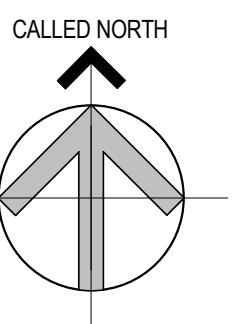
Brady Sullivan Properties
 670 N. Commercial Street
 Manchester, nh 03101
 603.622.6223



Owner
**BRADY SULLIVAN
 PROPERTIES**

Project
BOURNE

170 CLAY POND ROAD, BOURNE
 MA 02532



Seals
 Project Status

Issues	
Date	Description

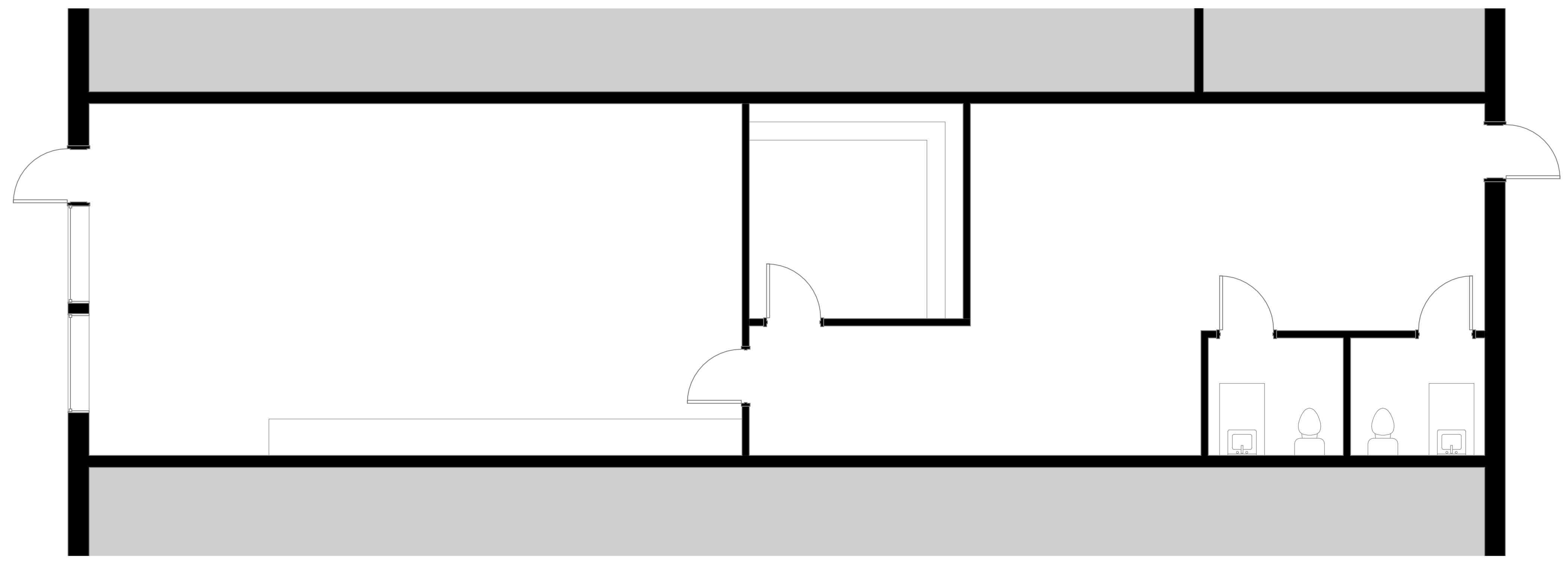
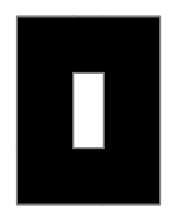
Revisions	
No.	Description

Drawing Title
RETAIL SUITE 5

Issue Date:	10-29-2019
Project No:	Project Number
Scale:	1/4" = 1'-0"
Project Manager:	Production Leader:
Project Architect:	Peer Reviewer:

Drawing Number
A1-6

1 RETAIL SUITE 5
 1/4" = 1'-0"



DISCLAIMER: ALL BUILDOUT IS BASED ON BRADY SULLIVAN PROPERTIES "CONSTRUCTION STANDARDS".
 BRADY SULLIVAN PROPERTIES RESERVES THE RIGHT TO ISSUE A CHANGE ORDER FOR ADDITIONAL WORK
 NOT INCLUDED IN DRAWINGS.

10/29/2019 3:21:10 PM