



Brady Sullivan Properties
670 N. Commercial Street
Manchester, nh 03101
603.622.6223

PROPERTY OF THE UNITED STATES GOVERNMENT
COPYING, DISSEMINATION, OR DISTRIBUTION OF
THESE DRAWINGS, PLANS, OR SPECIFICATIONS TO
UNAUTHORIZED PERSONS IS PROHIBITED
Do not remove this notice. Properly destroy documents
when no longer
needed.

© 2015 Brady Sullivan Properties

Owner
**BRADY SULLIVAN
PROPERTIES**
MANCHESTER NH

Project
410 AMHERST STREET
Nashua NH

SUITE 219
1,329 RSF

Seals

Issues	
Date	Description

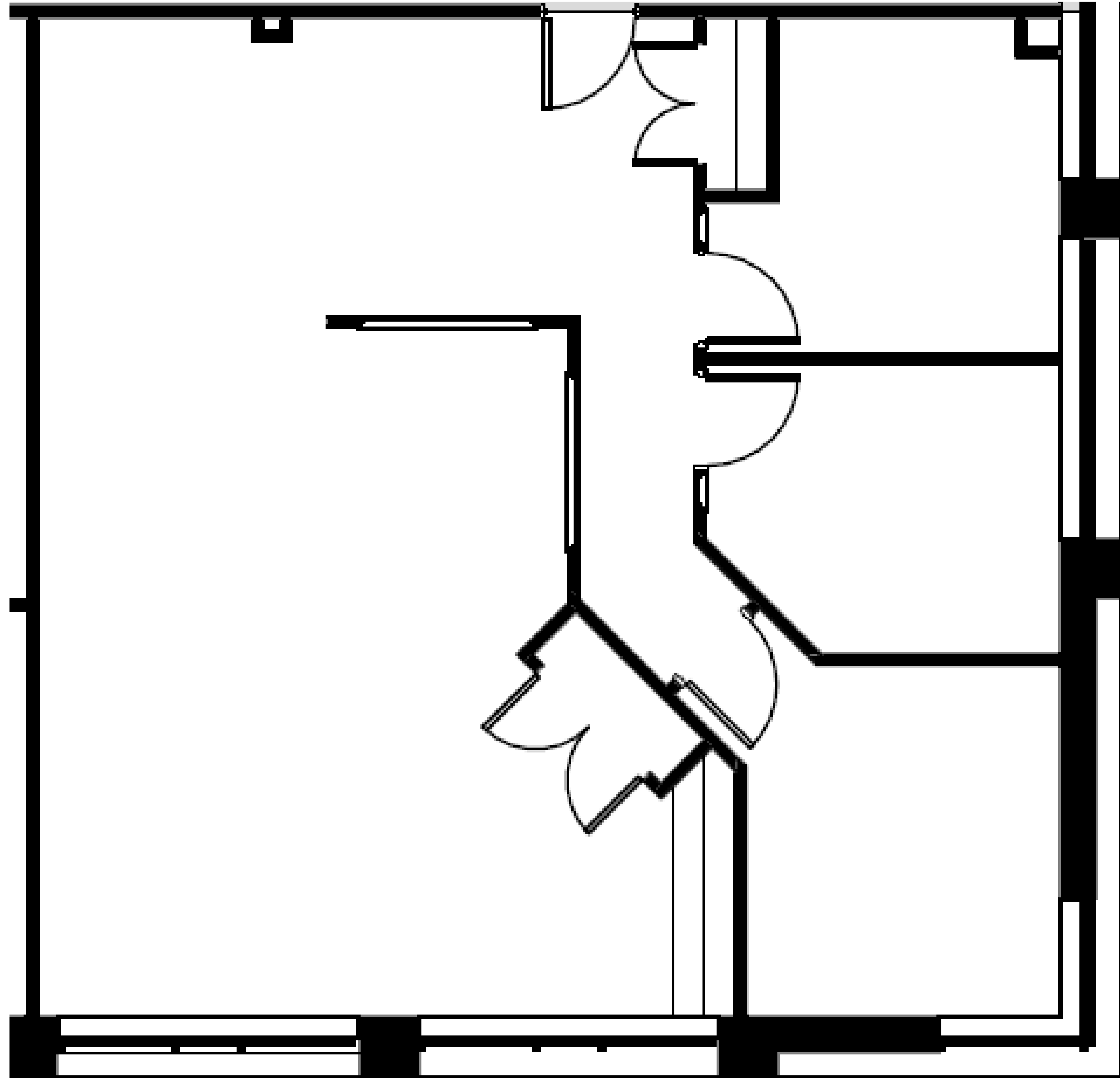
Revisions		
No.	Date	Description

Drawing Title

Issue Date:	
Project No:	Scale: 1/2" = 1'-0"
Project Manager:	Production Leader:
Project Architect: RO	Peer Reviewer: CL

Drawing Number

A1-4



1 SUITE 219
1/2" = 1'-0"

5/5/2016 4:33:20 PM

