



Brady Sullivan Properties
670 N. Commercial Street
Manchester, nh 03101
603.622.6223

PROPERTY OF THE UNITED STATES GOVERNMENT
COPYING, DISSEMINATION, OR DISTRIBUTION OF
THESE DRAWINGS, PLANS, OR SPECIFICATIONS TO
UNAUTHORIZED PERSONS IS PROHIBITED
Do not remove this notice. Properly destroy documents
when no longer
needed.

© 2015 Brady Sullivan Properties

Owner

**BRADY SULLIVAN
PROPERTIES**

MANCHESTER NH

Project

410 AMHERST STREET

Nashua NH

Seals

Issues

Date	Description

Revisions

No.	Date	Description

Drawing Title

SUITE 218

899 RSF

Issue Date:

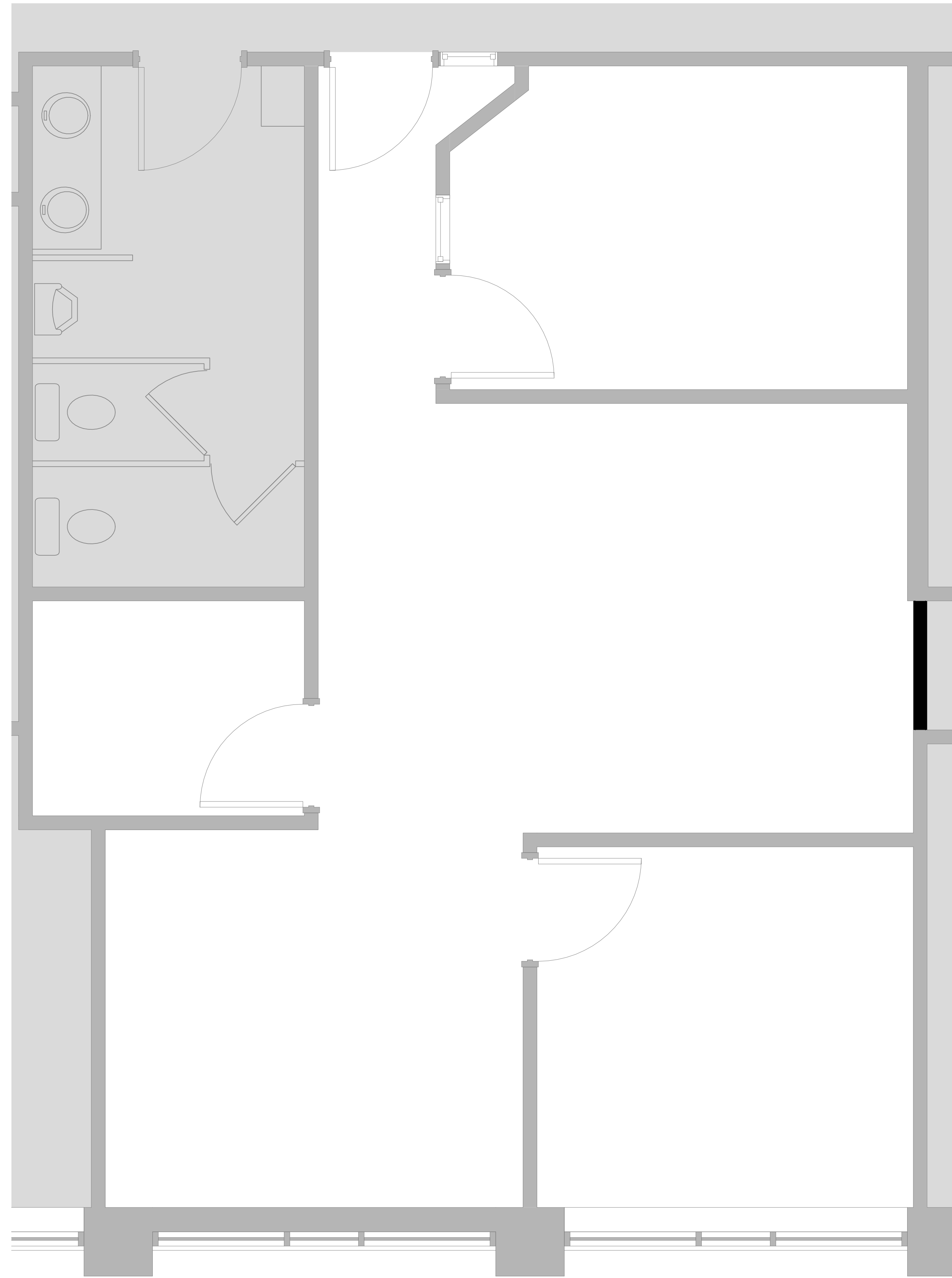
Project No: Scale: 1/2" = 1'-0"

Project Manager: Production Leader:

Project Architect: RO Peer Reviewer: CL

Drawing Number

A1-4



1 SUITE 218
1/2" = 1'-0"

5/5/2016 4:33:20 PM