



Brady Sullivan Properties
670 N. Commercial Street
Manchester, nh 03101
603.622.6223

PROPERTY OF THE UNITED STATES GOVERNMENT
COPYING, DISSEMINATION, OR DISTRIBUTION OF
THESE DRAWINGS, PLANS, OR SPECIFICATIONS TO
UNAUTHORIZED PERSONS IS PROHIBITED
Do not remove this notice. Properly destroy documents
when no longer
needed.

© 2015 Brady Sullivan Properties

Owner

**BRADY SULLIVAN
PROPERTIES**

MANCHESTER
NH

Project

410 AMHERST STREET

NASHUA, NH

Seals

Issues

Date	Description

Revisions

No.	Date	Description

Drawing Title

SUITE 1

5,969 RSF

Issue Date:

Project No: Scale: 1/4" = 1'-0"

Project Manager: Production Leader:

Project Architect: RO Peer Reviewer: CL

Drawing Number

A0.0



1 SUITE 1
1/4" = 1'-0"

5/5/2016 4:28:18 PM



Brady Sullivan Properties
670 N. Commercial Street
Manchester, nh 03101
603.622.6223

PROPERTY OF THE UNITED STATES GOVERNMENT
COPYING, DISSEMINATION, OR DISTRIBUTION OF
THESE DRAWINGS, PLANS, OR SPECIFICATIONS TO
UNAUTHORIZED PERSONS IS PROHIBITED
Do not remove this notice. Properly destroy documents
when no longer needed.

© 2015 Brady Sullivan Properties

Owner
**BRADY SULLIVAN
PROPERTIES**
MANCHESTER NH

Project
410 AMHERST STREET
Nashua NH

Seals

Issues	
Date	Description

Revisions		
No.	Date	Description

Drawing Title
SUITE 2
5,968 RSF

Issue Date:	
Project No:	Scale: 1/4" = 1'-0"
Project Manager:	Production Leader:
Project Architect: RO	Peer Reviewer: CL

Drawing Number
A1-6



1 SUITE 2
1/4" = 1'-0"

5/5/2016 4:31:13 PM



Brady Sullivan Properties
670 N. Commercial Street
Manchester, nh 03101
603.622.6223

PROPERTY OF THE UNITED STATES GOVERNMENT
COPYING, DISSEMINATION, OR DISTRIBUTION OF
THESE DRAWINGS, PLANS, OR SPECIFICATIONS TO
UNAUTHORIZED PERSONS IS PROHIBITED
Do not remove this notice. Properly destroy documents
when no longer needed.

© 2015 Brady Sullivan Properties

Owner
**BRADY SULLIVAN
PROPERTIES**
MANCHESTER NH

Project
410 AMHERST STREET
NASHUA NH

Seals

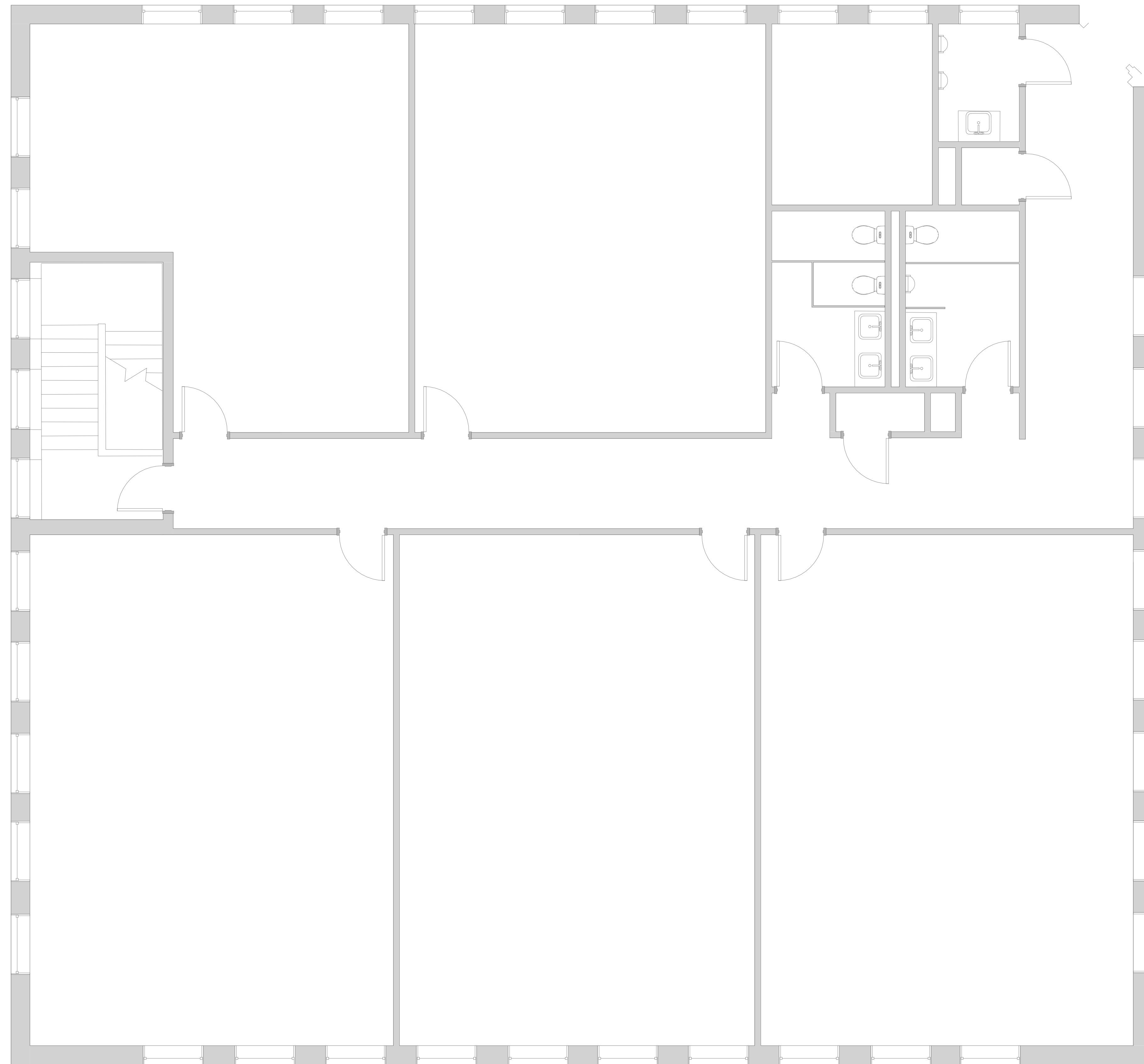
Issues	
Date	Description

Revisions		
No.	Date	Description

Drawing Title
SUITE 3
5,968 RSF

Issue Date:	
Project No:	Scale: 1/4" = 1'-0"
Project Manager:	Production Leader:
Project Architect: CL	Peer Reviewer: CL

Drawing Number
A0.7



1 SUITE 3
1/4" = 1'-0"

5/5/2016 4:40:14 PM



Brady Sullivan Properties
670 N. Commercial Street
Manchester, nh 03101
603.622.6223

PROPERTY OF THE UNITED STATES GOVERNMENT
COPYING, DISSEMINATION, OR DISTRIBUTION OF
THESE DRAWINGS, PLANS, OR SPECIFICATIONS TO
UNAUTHORIZED PERSONS IS PROHIBITED
Do not remove this notice. Properly destroy documents
when no longer needed.

© 2015 Brady Sullivan Properties

Owner
**BRADY SULLIVAN
PROPERTIES**
MANCHESTER
NH

Project
410 AMHERST STREET
NASHUA, NH

Seals

Issues	
Date	Description

Revisions		
No.	Date	Description

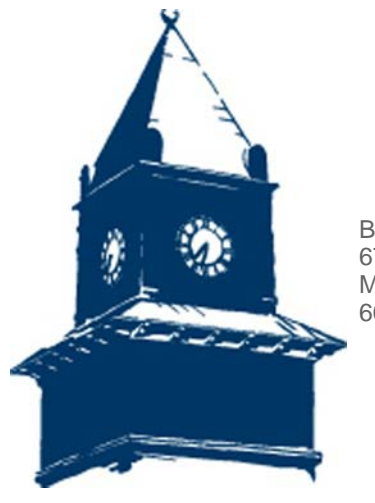
Drawing Title
SUITE 110
9,600 RSF

Issue Date:	
Project No:	Scale: 3/16" = 1'-0"
Project Manager:	Production Leader:
Project Architect: RO	Peer Reviewer: CL

Drawing Number
A0.4

1 SUITE 110
3/16" = 1'-0"

5/5/2016 4:27:36 PM



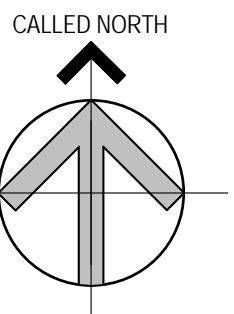
Brady Sullivan Properties
670 N. Commercial Street
Manchester, nh 03101
603.622.6223

PROPERTY OF THE UNITED STATES GOVERNMENT
COPYING, DISSEMINATION, OR DISTRIBUTION OF
THESE DRAWINGS, PLANS, OR SPECIFICATIONS TO
UNAUTHORIZED PERSONS IS PROHIBITED
Do not remove this notice. Properly destroy documents
when no longer
needed.

© 2015 Brady Sullivan Properties

Owner
**BRADY SULLIVAN
PROPERTIES**
MANCHESTER
NH

Project
410 AMHERST STREET
NASHUA, NH



Seals

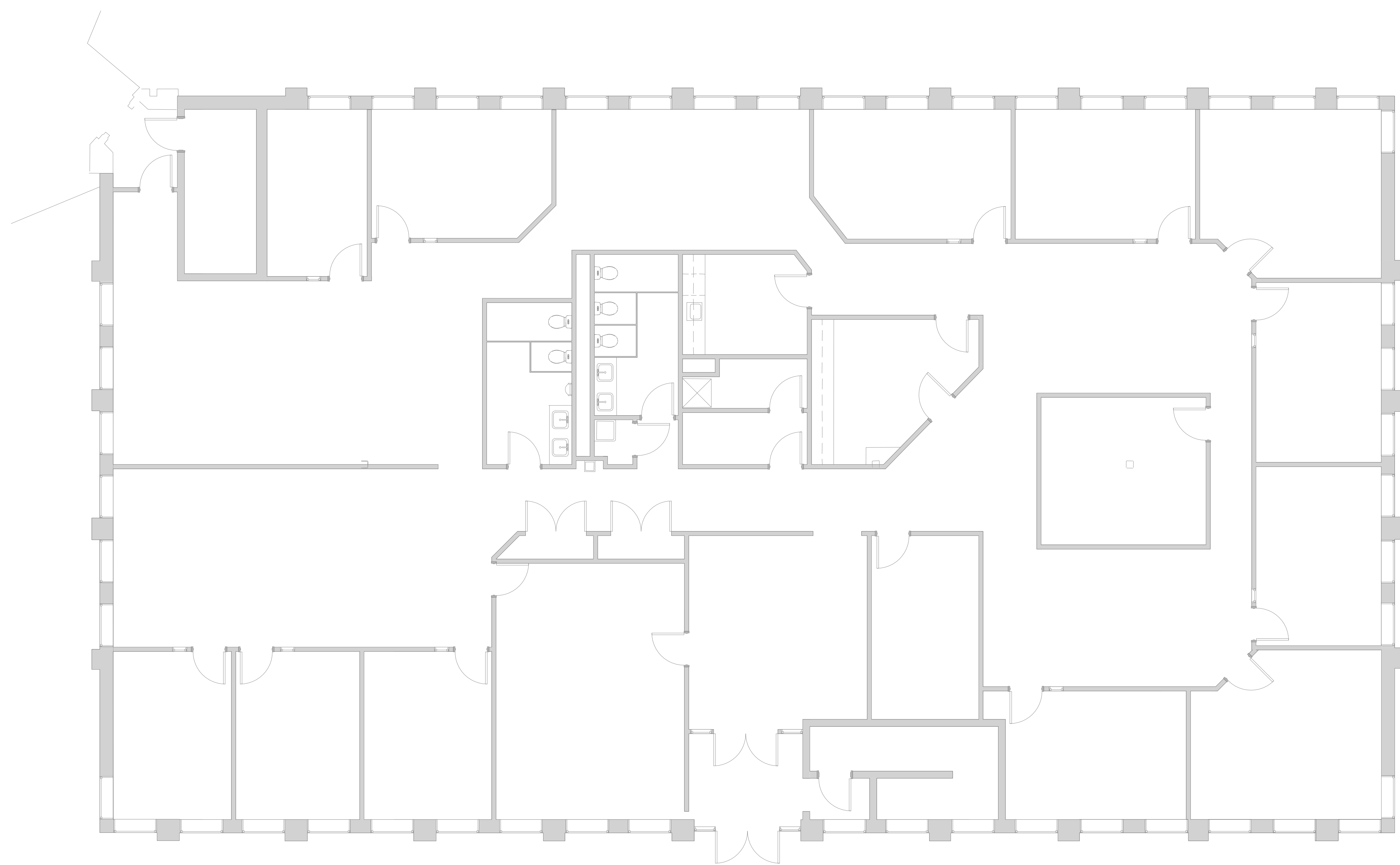
Issues	
Date	Description

Revisions		
No.	Date	Description

Drawing Title
SUITE 150
8,070 RSF

Issue Date:	
Project No:	Scale: 3/16" = 1'-0"
Project Manager:	Production Leader:
Project Architect: RO	Peer Reviewer: CL

Drawing Number
A0.5



1 SUITE 150
3/16" = 1'-0"



5/5/2016 4:28:30 PM



Brady Sullivan Properties
670 N. Commercial Street
Manchester, nh 03101
603.622.6223

PROPERTY OF THE UNITED STATES GOVERNMENT
COPYING, DISSEMINATION, OR DISTRIBUTION OF
THESE DRAWINGS, PLANS, OR SPECIFICATIONS TO
UNAUTHORIZED PERSONS IS PROHIBITED
Do not remove this notice. Properly destroy documents
when no longer
needed.

© 2015 Brady Sullivan Properties

Owner

**BRADY SULLIVAN
PROPERTIES**

MANCHESTER NH

Project

410 AMHERST STREET

Nashua NH

Seals

Issues

Date	Description

Revisions

No.	Date	Description

Drawing Title

SUITE 250

6,183 RSF

Issue Date:

Project No: Scale: 1/4" = 1'-0"

Project Manager: Production Leader:

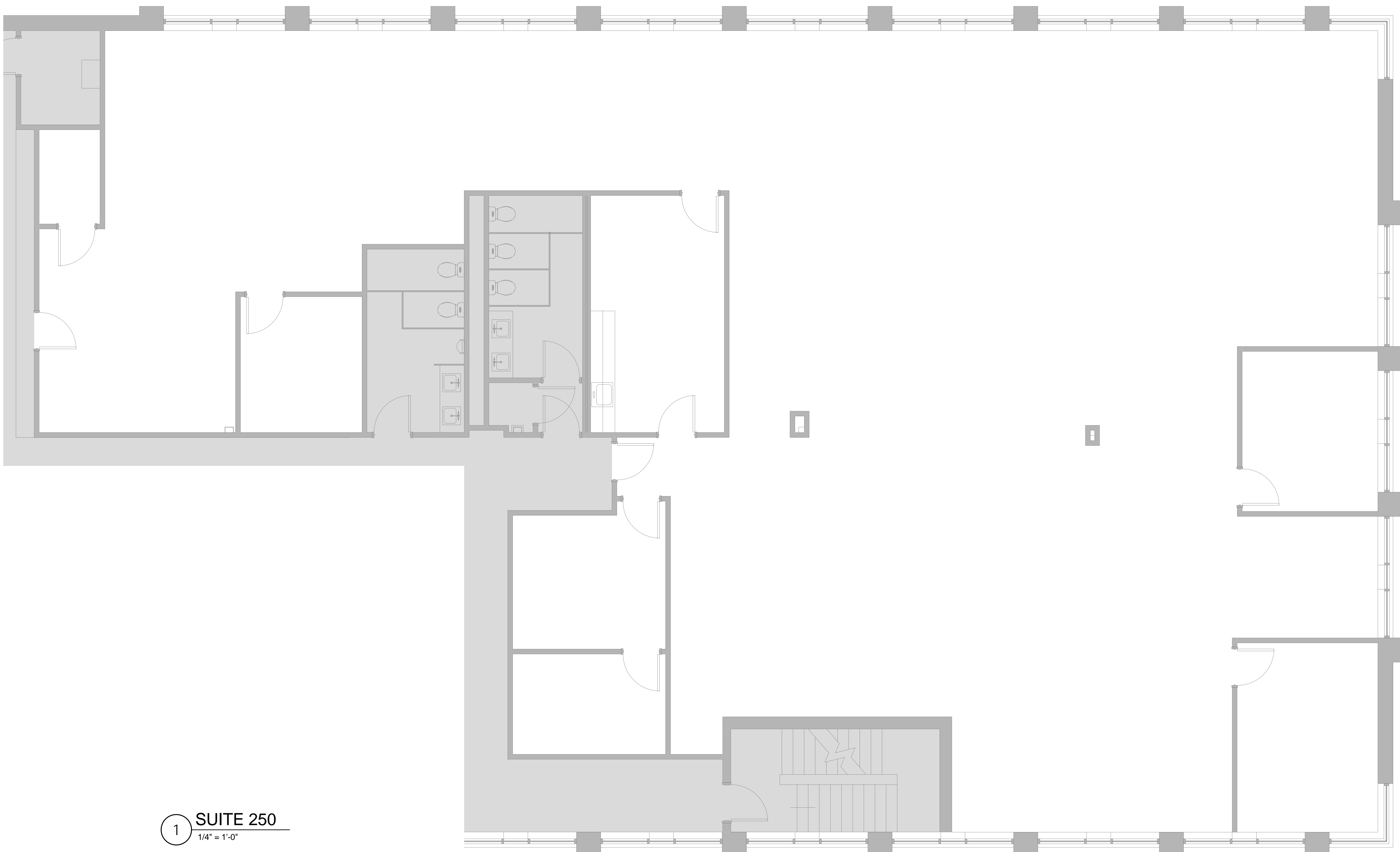
Project Architect: RO Peer Reviewer: CL

Drawing Number

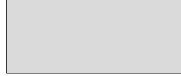


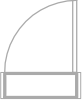


A1-7

5/5/2016 4:30:09 PM

1 SUITE 250
1/4" = 1'-0"

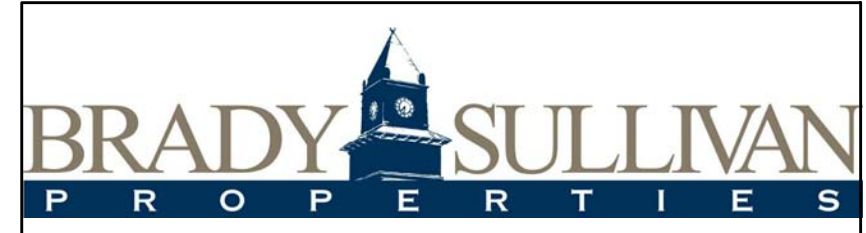


LEGEND

	NOT IN SCOPE		PROPOSED ITEMS(HEAVY LINE WEIGHT)
	EXISTING ITEMS		EXISTING DOOR AND FRAME TO REMAIN
	NEW DOOR AND FRAME		DEMO ITEMS



1 SUITE 300
3/16" = 1'-0"



410 Amherst Street
Nashua NH

No.	Description	Date

SUITE 300		A0.5
Project number		
Date		
Drawn by	Author	
Checked by	Checker	Scale As indicated



Brady Sullivan Properties
670 N. Commercial Street
Manchester, nh 03101
603.622.6223

PROPERTY OF THE UNITED STATES GOVERNMENT
COPYING, DISSEMINATION, OR DISTRIBUTION OF
THESE DRAWINGS, PLANS, OR SPECIFICATIONS TO
UNAUTHORIZED PERSONS IS PROHIBITED
Do not remove this notice. Properly destroy documents
when no longer
needed.

© 2015 Brady Sullivan Properties

Owner
**BRADY SULLIVAN
PROPERTIES**
MANCHESTER NH

Project
410 AMHERST STREET
NASHUA NH

Seals

Issues	
Date	Description

Revisions		
No.	Date	Description

Drawing Title
SUITE 380
3,332 RSF

Issue Date:	
Project No:	Scale: 1/4" = 1'-0"
Project Manager:	Production Leader:
Project Architect: CL	Peer Reviewer: CL

Drawing Number
A0.6



1 SUITE 380
1/4" = 1'-0"

5/5/2016 4:11:09 PM