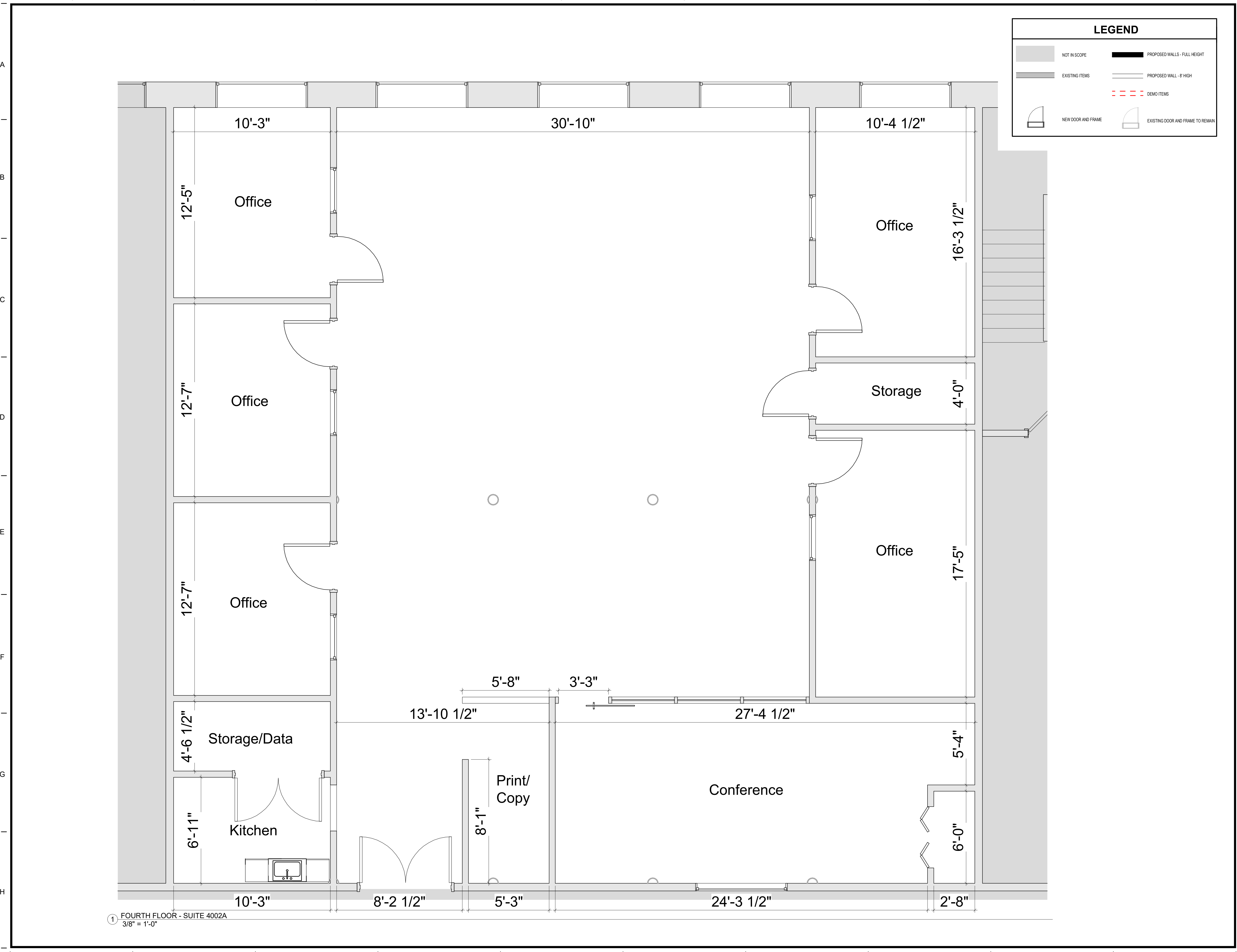


1/12/2023 11:08:19 AM



① FOURTH FLOOR - SUITE 4002A  
3/8" = 1'-0"



Brady Sullivan Properties  
670 N. Commercial Street  
Manchester, nh 03101  
603.622.6223



Owner  
**BRADY SULLIVAN  
PROPERTIES**

Project  
**WAUMBEC MILL**

250 Commercial St.  
Manchester, NH 03101

**SUITE 4002A**  
**3,237 SF**

Seals

| Issues |             |
|--------|-------------|
| Date   | Description |
|        |             |
|        |             |
|        |             |
|        |             |

| Revisions |      |             |
|-----------|------|-------------|
| No.       | Date | Description |
|           |      |             |
|           |      |             |
|           |      |             |
|           |      |             |

Drawing Title  
**FOURTH FLOOR  
- SUITE 4002A**

Issue Date: 01-12-2023

Project No: Project Number Scale: As Indicated

Project Manager: Production Leader:

Project Architect: Peer Reviewer:

Drawing Number

**A213**