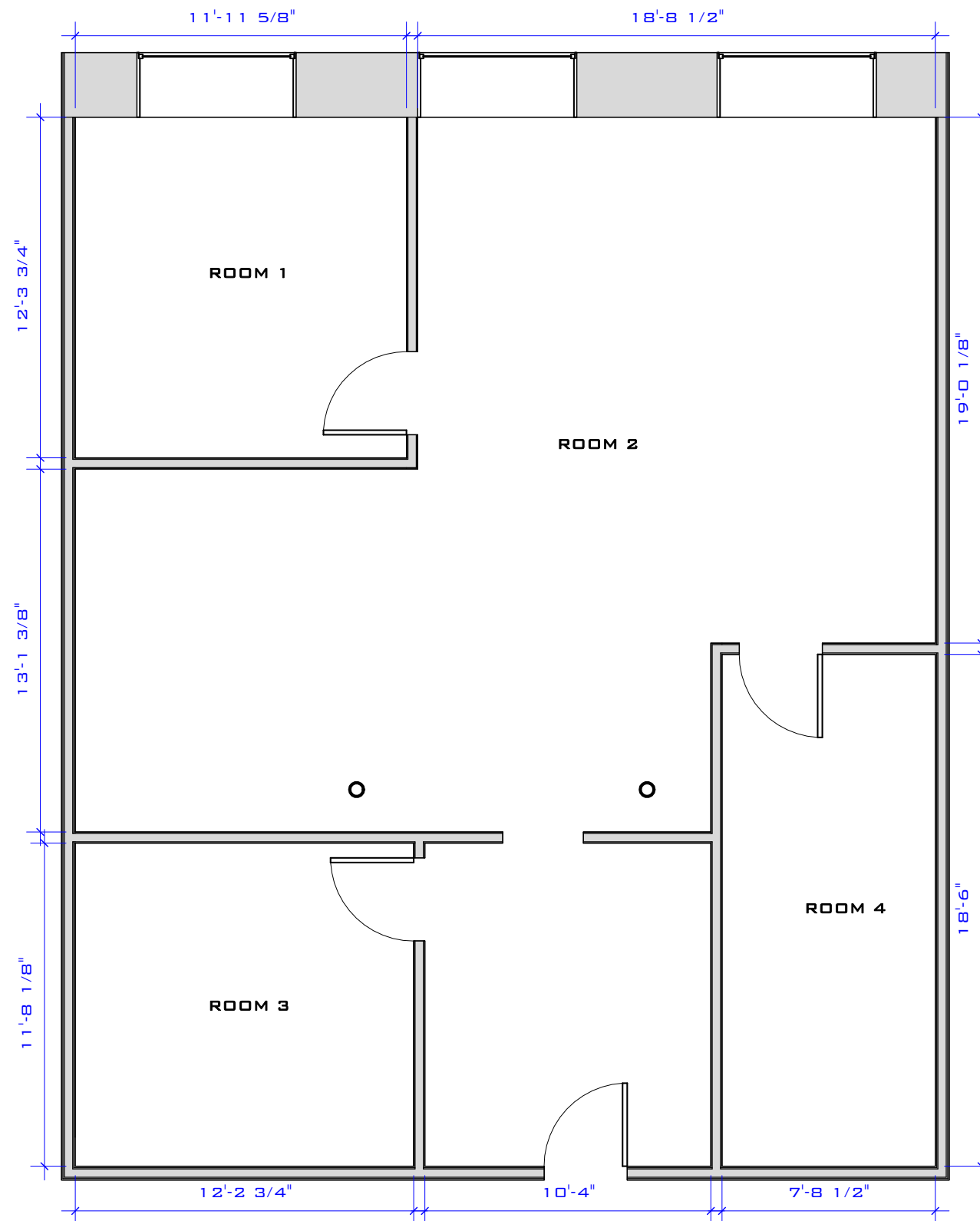


SUITE 3012	
Name	Area

ROOM 1	170 SF
ROOM 2	764 SF
ROOM 4	155 SF
ROOM 3	154 SF
Grand total: 4	1242 SF



1 01 FLOOR EXISTING
3/16" = 1'-0"



WAUBEC MILL

250 COMMERCIAL ST, MANCHESTER, NH 03101

No.	Description	Date

SUITE 3012 (EXISTING)

PROJECT NO.	PROJECT NUMBER	A1.01
DATE	ISSUE DATE	
DRAWN BY	AUTHOR	
CHECKED BY	CHECKER	
SCALE 3/16" = 1'-0"		