



Brady Sullivan Properties
670 N. Commercial Street
Manchester, nh 03101
603.622.6223



Owner
BRADY SULLIVAN PROPERTIES

Project
WAUMBEC MILL

250 Commercial St. Manchester, NH
03101

Seals
0%

SUITE 3011A
1,558 RSF

Issues	
Date	Description

Revisions		
No.	Date	Description

Drawing Title

Issue Date: 11-30-2018

Project No: Project Number Scale: As indicated

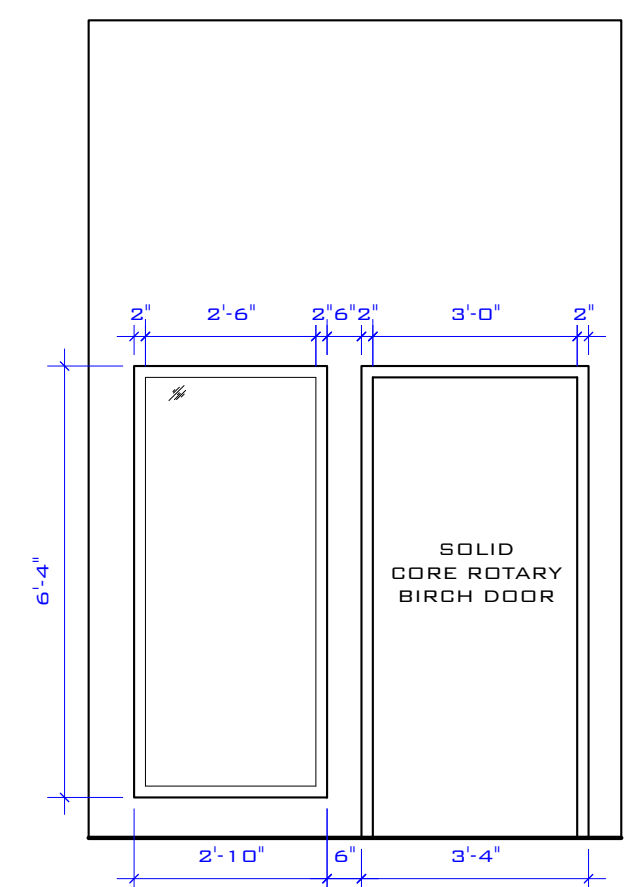
Project Manager: Production Leader:

Project Architect: Peer Reviewer:

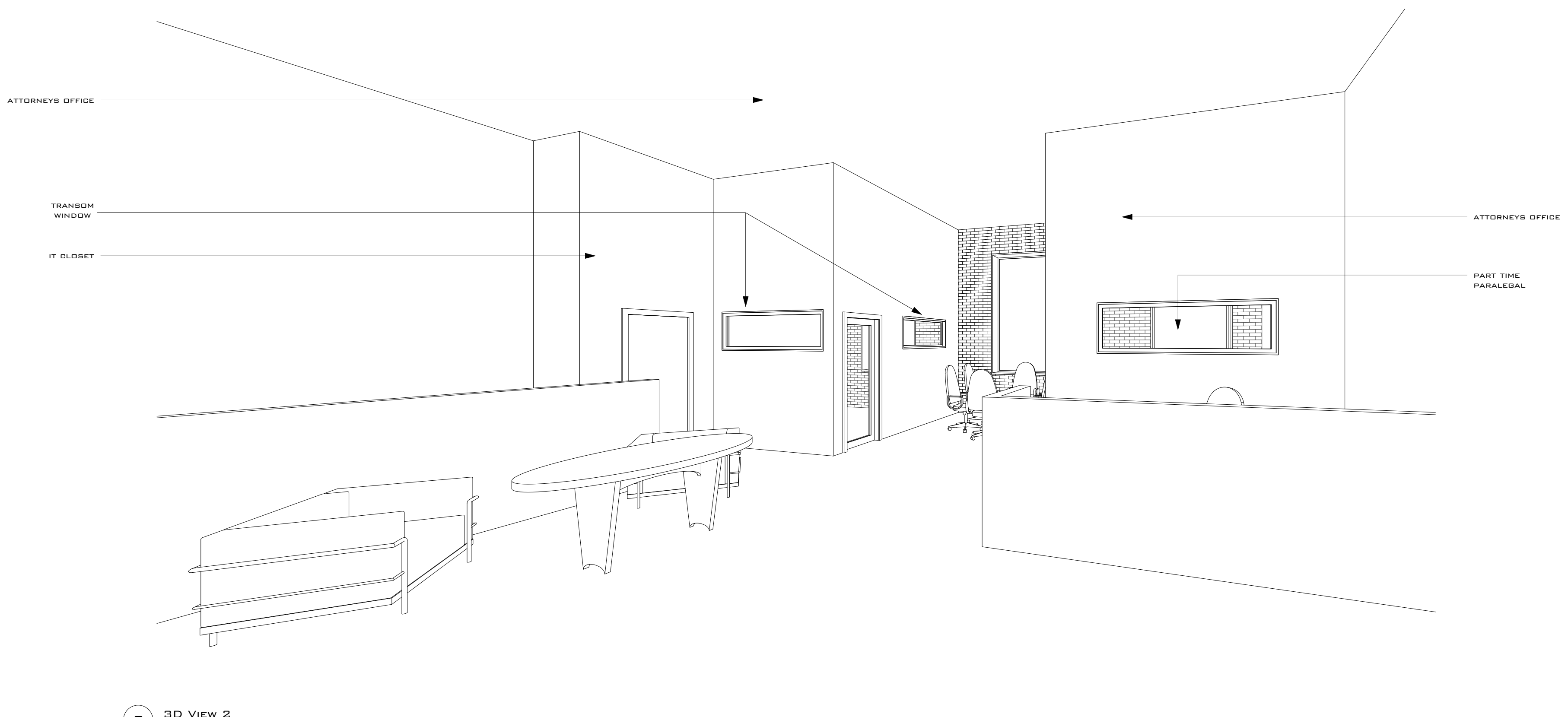
Drawing Number

E1.27

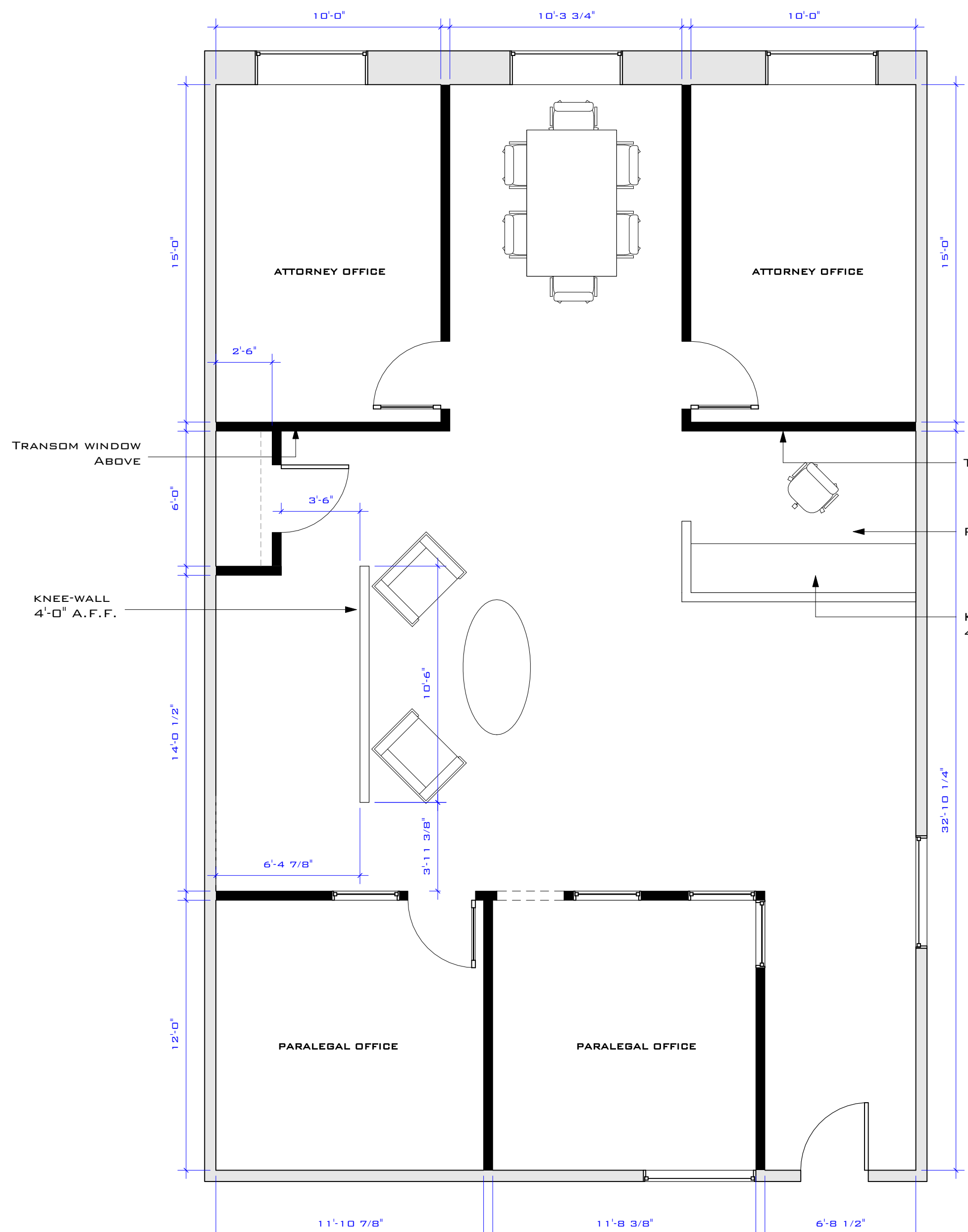
CONSTRUCTION SPECS
WALL TYPE - 3-5/8" 20 GA. METAL STUD WITH 1 LAYER 5/8" GYPSUM WALLBOARD EA. SIDE CONSTRUCTED TO DECKING. FINISH
DOORS - ROTARY BIRCH WITH BRUSHED NICKEL LOCKSETS.
FLOORS - EXISTING HARDWOOD.
ELECTRICAL - NEW OUTLETS PER CODE.
LIGHTING - BUILDING STANDARD (FLOURESCENT)
TRIM - BUILDING STANDARD TRIM PACKAGE.
HVAC - EXISTING
FURNITURE, DATA, TELCO AND WINDOW TREATMENTS - TO BE SUPPLIED BY AND INSTALLED BY TENANT.



TYPICAL DOOR ELEVATION
3/8" = 1'-0"



2 3D VIEW 2



1 PROPOSED FLOOR PLAN
1/4" = 1'-0"



3 3D VIEW 4

11/30/2018 2:02:47 PM