



Brady Sullivan Properties
670 N. Commercial Street
Manchester, nh 03101
603.622.6223



Owner
**BRADY SULLIVAN
PROPERTIES**

Project
WAUMBEC MILL

250 Commercial St, Manchester, NH
03101

Seals
0%

Issues	
Date	Description

Revisions		
No.	Date	Description

Drawing Title
SUITE 3009
1,175 RSF

Issue Date: 12-12-2019

Project No: Project Number Scale: As indicated

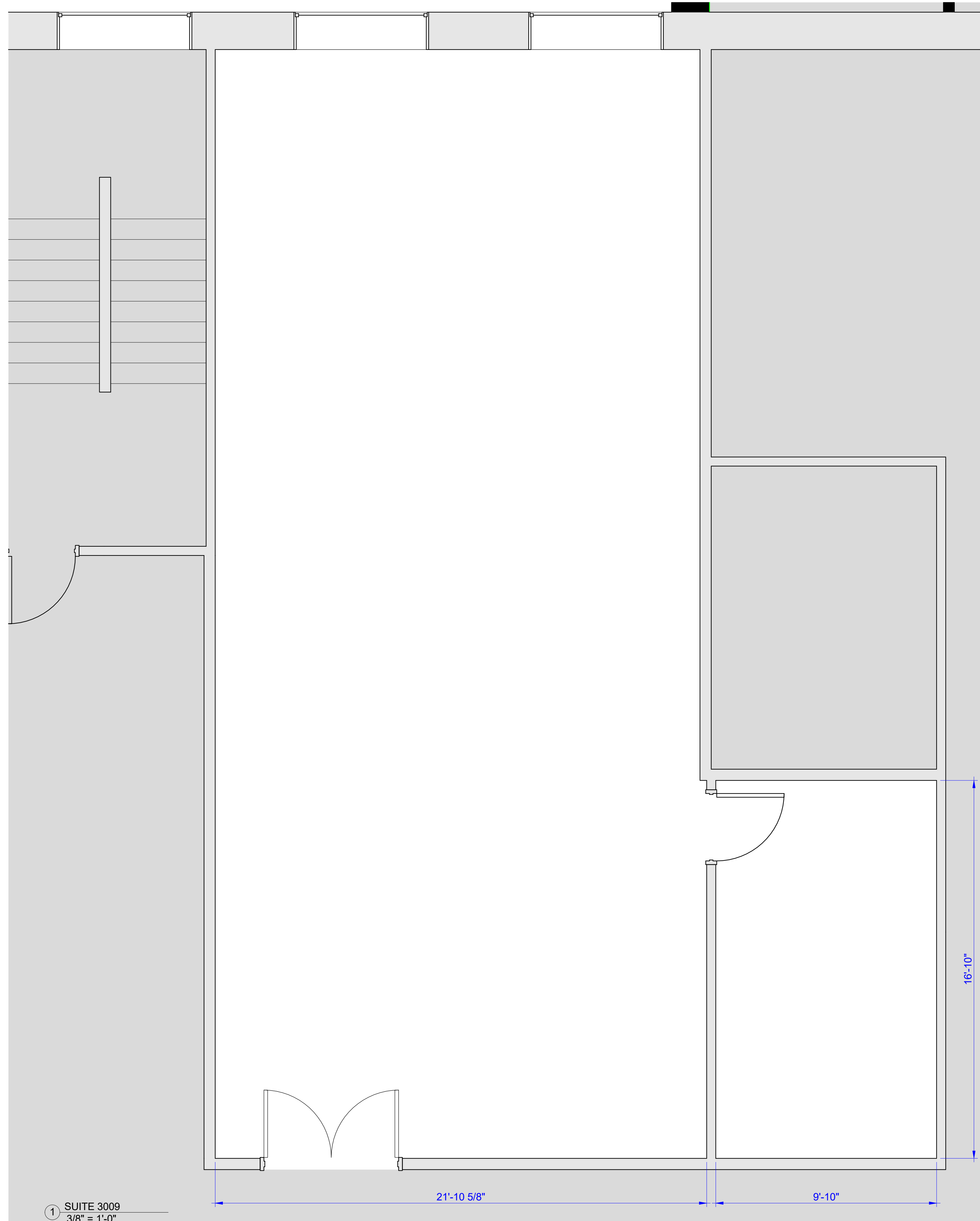
Project Manager: Production Leader:

Project Architect: Peer Reviewer:

Drawing Number

E1.22

LEGEND			
	NOT IN SCOPE		PROPOSED WALLS - FULL HEIGHT
	EXISTING ITEMS		PROPOSED WALL - 8' HIGH
	DEMO ITEMS		EXISTING DOOR AND FRAME TO REMAIN
	NEW DOOR AND FRAME		



① SUITE 3009
3/8" = 1'-0"