



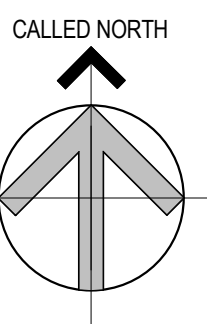
Brady Sullivan Properties  
670 N. Commercial Street  
Manchester, nh 03101  
603.622.6223



Owner  
**BRADY SULLIVAN  
PROPERTIES**

Project  
**WAUMBEC MILL**

250 Commercial St, Manchester, NH  
03101



Seals  
0%

Issues	
Date	Description

Revisions		
No.	Date	Description

Drawing Title  
**SUITE 2009A  
2,677 SF**

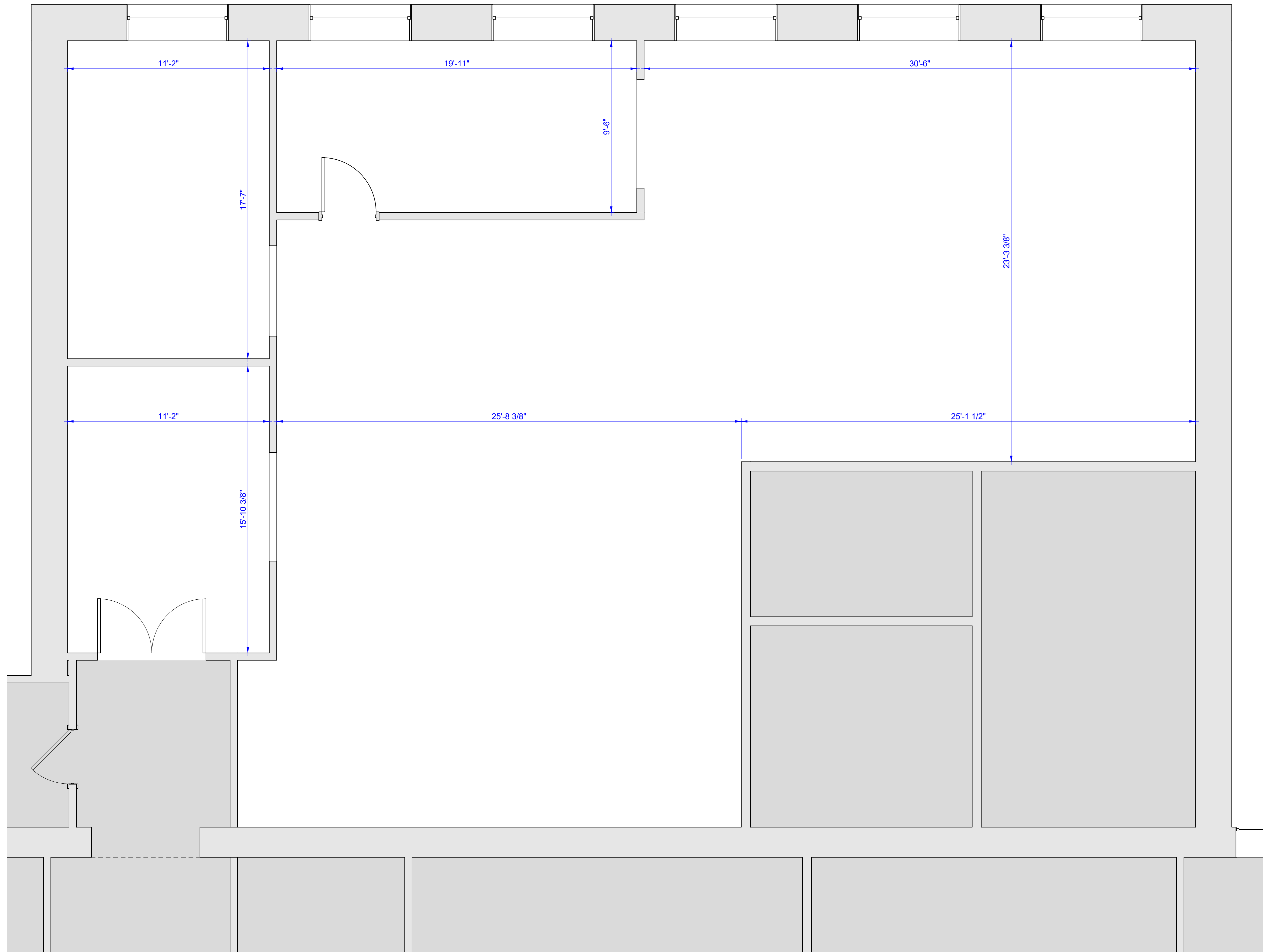
Issue Date: 6-26-2020

Project No: Project Number Scale: 3/8" = 1'-0"

Project Manager: Production Leader:

Project Architect: Peer Reviewer:

Drawing Number  
**E1.39**



① SUITE 2009A  
3/8" = 1'-0"

6/26/2020 1:10:47 PM