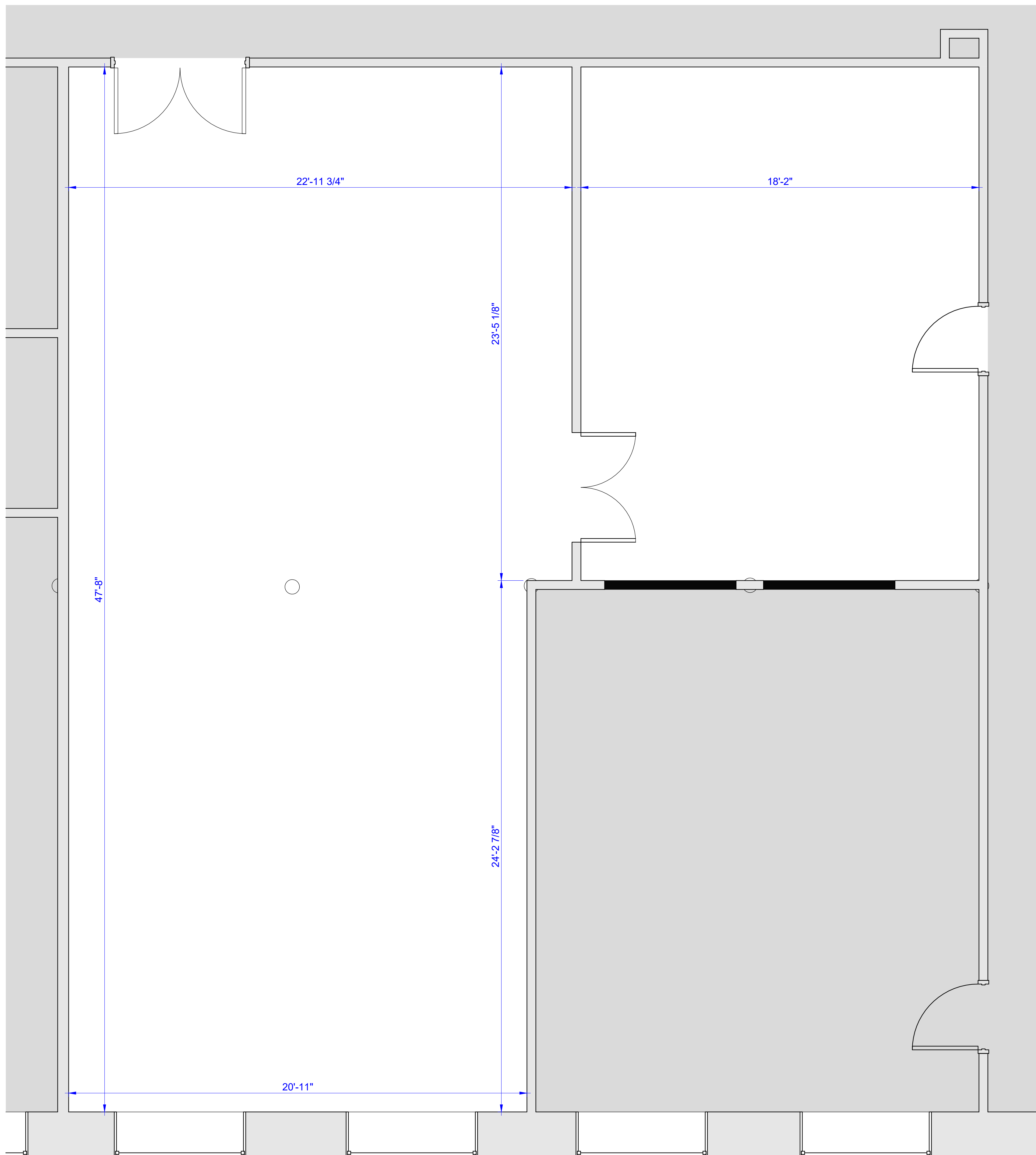


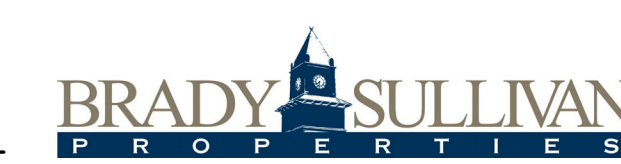
LEGEND			
	NOT IN SCOPE		PROPOSED WALLS - FULL HEIGHT
	EXISTING ITEMS		PROPOSED WALL - 8' HIGH
	DEMO ITEMS		EXISTING DOOR AND FRAME TO REMAIN
	NEW DOOR AND FRAME		



① SUITE 2003A
3/8" = 1'-0"



Brady Sullivan Properties
670 N. Commercial Street
Manchester, nh 03101
603.622.6223



Owner
BRADY SULLIVAN PROPERTIES

Project
WAUMBEC MILL

250 Commercial St, Manchester, NH
03101

Seals
0%

Issues	
Date	Description

Revisions	
No.	Date

Drawing Title
SUITE 2003A
1,766 RSF

Issue Date:	6-11-2019
Project No:	Project Number
Scale:	As indicated
Project Manager:	Production Leader:
Project Architect:	Peer Reviewer:

Drawing Number
E1.30