



Brady Sullivan Properties
670 N. Commercial Street
Manchester, nh 03101
603.622.6223



Owner
**BRADY SULLIVAN
PROPERTIES**

Project
WAUMBEC MILL

250 Commercial St, Manchester, NH
03101

Seals
0%

Issues	
Date	Description

Revisions		
No.	Date	Description

Drawing Title
**THIRD FLOOR
ANNEX**

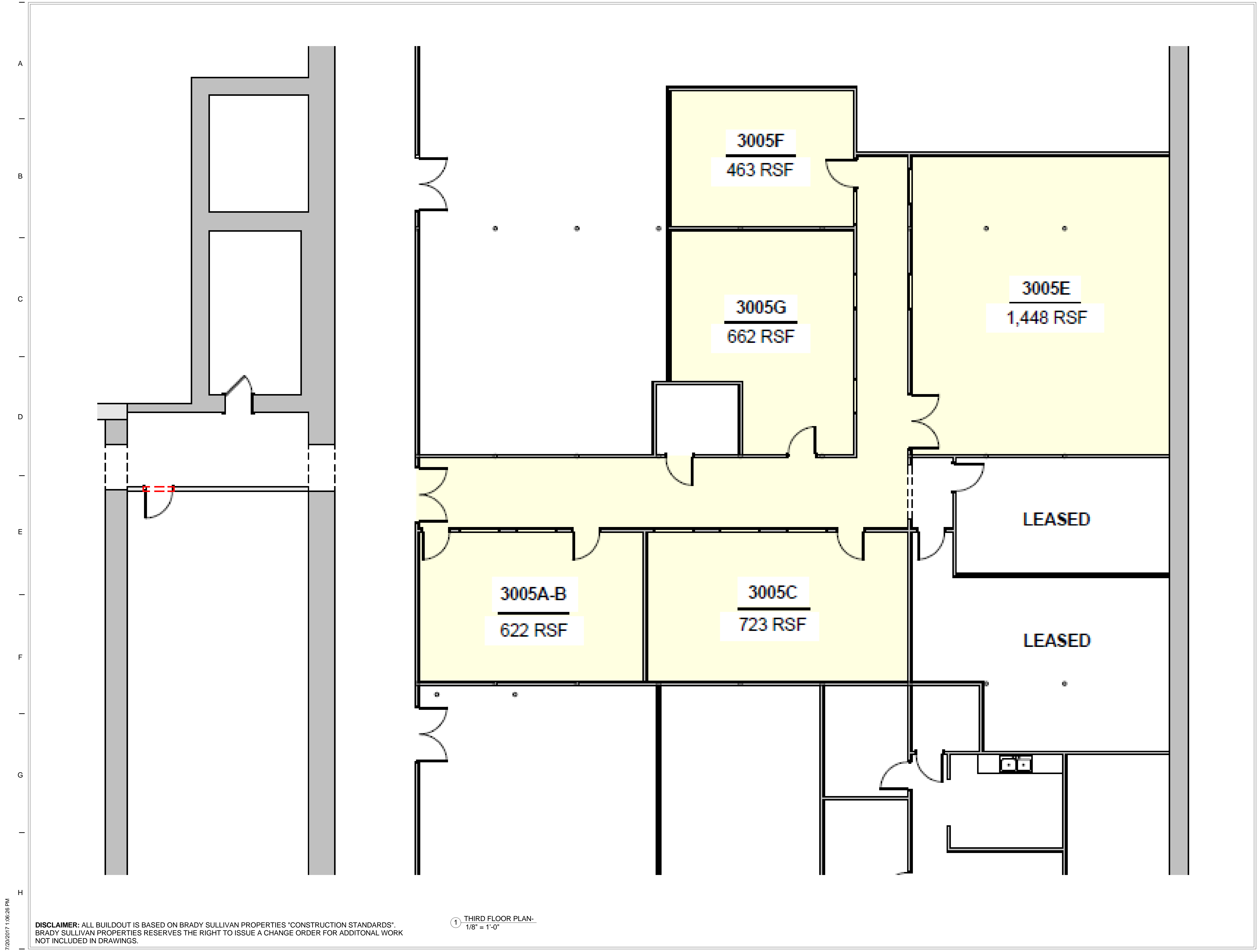
Issue Date: 7-20-2017

Project No: Project Number Scale: 1/8" = 1'-0"

Project Manager: Production Leader:
Project Architect: Peer Reviewer:

Drawing Number

E1.19



DISCLAIMER: ALL BUILDOUT IS BASED ON BRADY SULLIVAN PROPERTIES "CONSTRUCTION STANDARDS". BRADY SULLIVAN PROPERTIES RESERVES THE RIGHT TO ISSUE A CHANGE ORDER FOR ADDITIONAL WORK NOT INCLUDED IN DRAWINGS.

① THIRD FLOOR PLAN-
1/8" = 1'-0"

7/20/2017 1:06:26 PM