



Brady Sullivan Properties
670 N. Commercial Street
Manchester, nh 03101
603.622.6223



Owner
**BRADY SULLIVAN
PROPERTIES**

Project
WAUMBEC MILL

250 Commercial St, Manchester, NH
03101

3rd Floor Executive Suites
Suite 3005E - 1,448 RSF
Suite 3005F - 463 RSF
Suite 3005G - 662 RSF

Seals
0%

Issues	
Date	Description

Revisions		
No.	Date	Description

Drawing Title
**THIRD FLOOR
ANNEX**

Issue Date: 7-20-2017

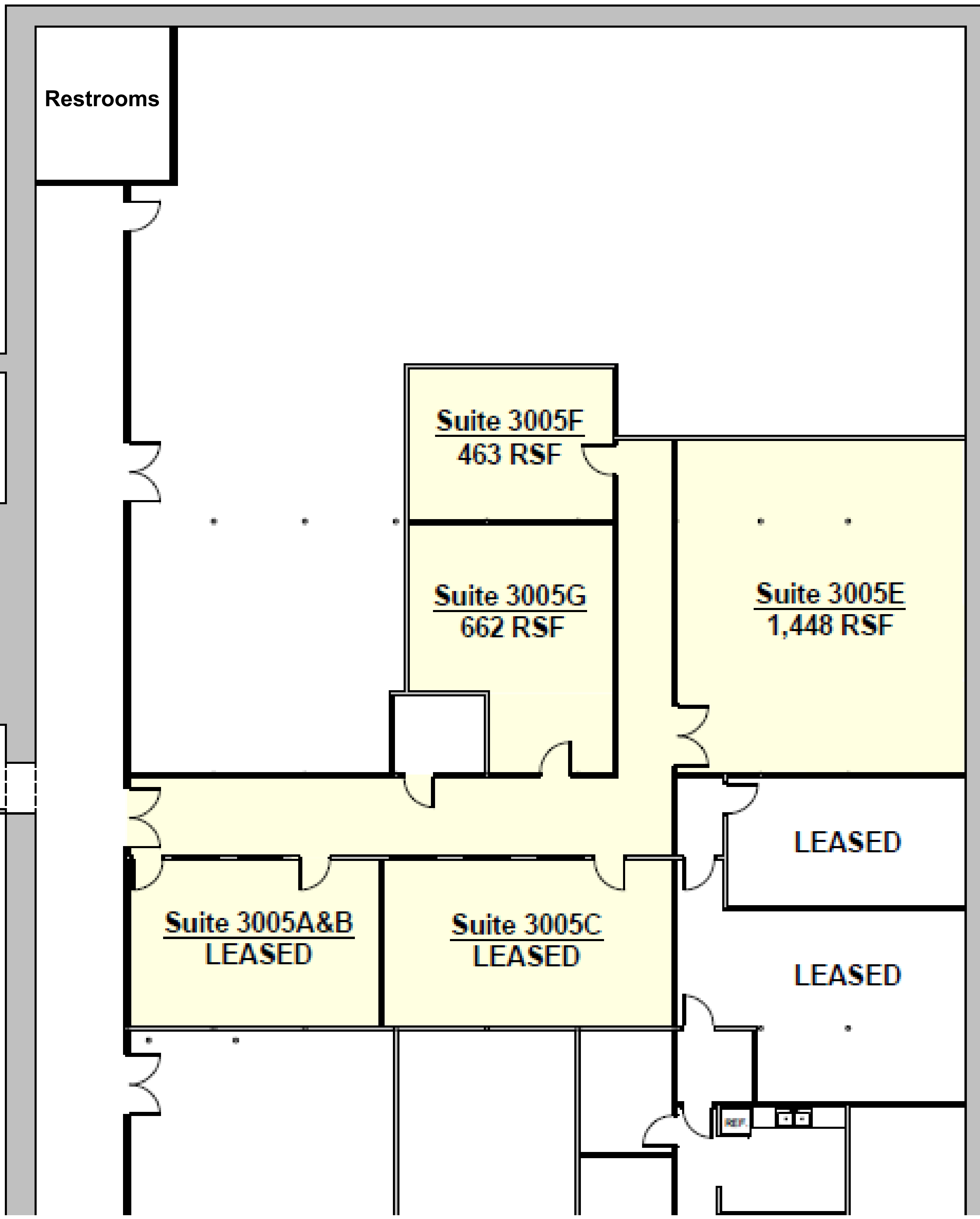
Project No: Project Number Scale: 1/8" = 1'-0"

Project Manager: Production Leader:

Project Architect: Peer Reviewer:

Drawing Number

E1.19



DISCLAIMER: ALL BUILDOUT IS BASED ON BRADY SULLIVAN PROPERTIES "CONSTRUCTION STANDARDS". BRADY SULLIVAN PROPERTIES RESERVES THE RIGHT TO ISSUE A CHANGE ORDER FOR ADDITIONAL WORK NOT INCLUDED IN DRAWINGS.

7/20/2017 1:06:26 PM