



Brady Sullivan Properties  
670 N. Commercial Street  
Manchester, nh 03101  
603.622.6223



Owner  
**BRADY SULLIVAN  
PROPERTIES**

Project  
**WAUMBEC MILL**

250 Commercial St, Manchester, NH  
03101

**Third Floor  
Annex**

Seals  
0%

Issues	
Date	Description

Revisions		
No.	Date	Description

Drawing Title  
**THIRD FLOOR  
ANNEX**

Issue Date: 7-20-2017

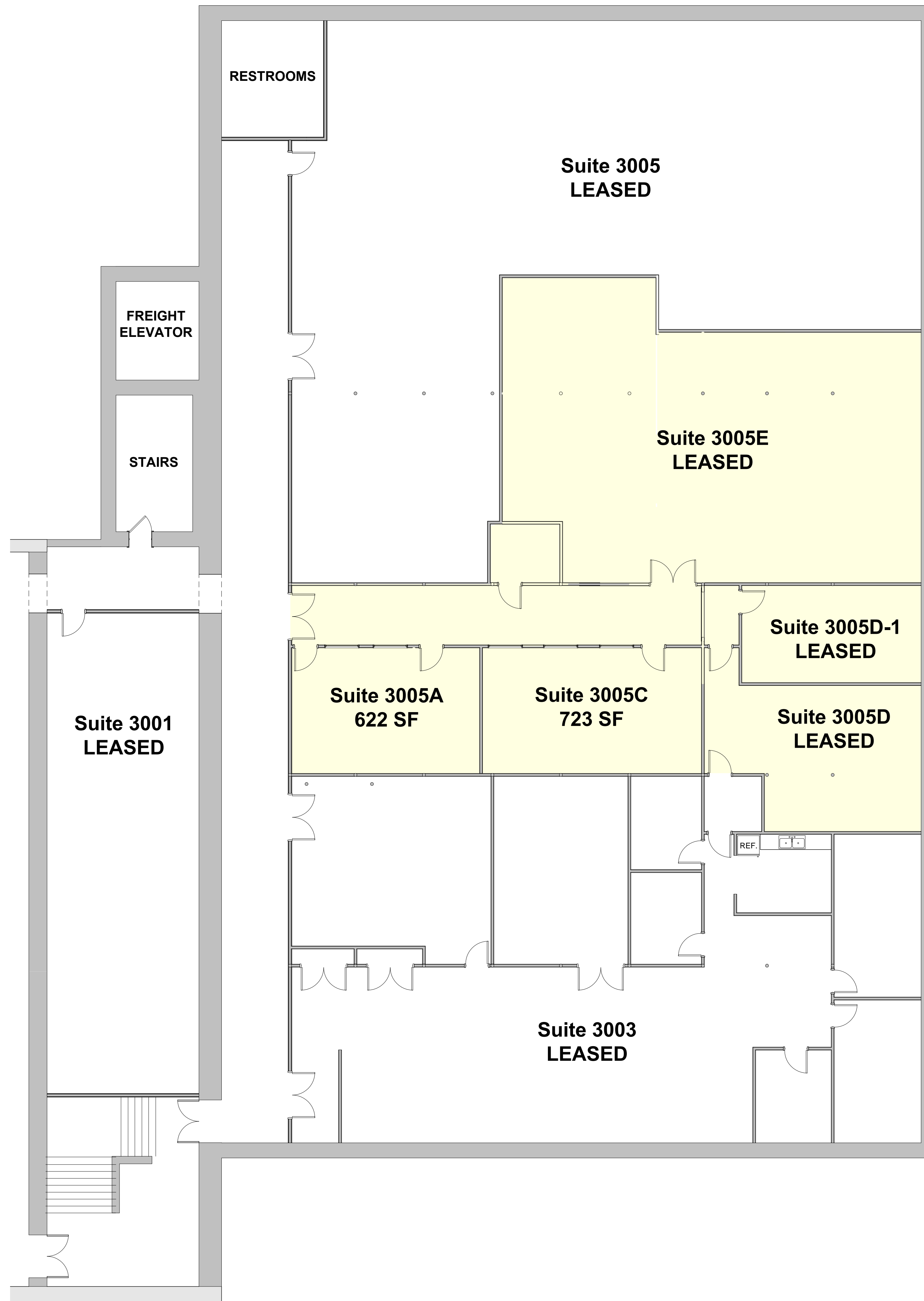
Project No: Project Number Scale: 1/8" = 1'-0"

Project Manager: Production Leader:

Project Architect: Peer Reviewer:

Drawing Number

**E1.19**



① THIRD FLOOR PLAN-  
1/8" = 1'-0"

**DISCLAIMER:** ALL BUILDOUT IS BASED ON BRADY SULLIVAN PROPERTIES "CONSTRUCTION STANDARDS". BRADY SULLIVAN PROPERTIES RESERVES THE RIGHT TO ISSUE A CHANGE ORDER FOR ADDITIONAL WORK NOT INCLUDED IN DRAWINGS.

7/20/2017 1:06:26 PM