



Brady Sullivan Properties
 670 N. Commercial Street
 Manchester, nh 03101
 603.622.6223



Owner
**BRADY SULLIVAN
 PROPERTIES**

Project
WAUMBEC MILL

250 Commercial St, Manchester, NH
 03101

**Suite 3005A
 3,918 RSF**

Seals
 0%

Issues	
Date	Description

Revisions	
No.	Date

Drawing Title
**THIRD FLOOR
 ANNEX**

Issue Date: 7-20-2017

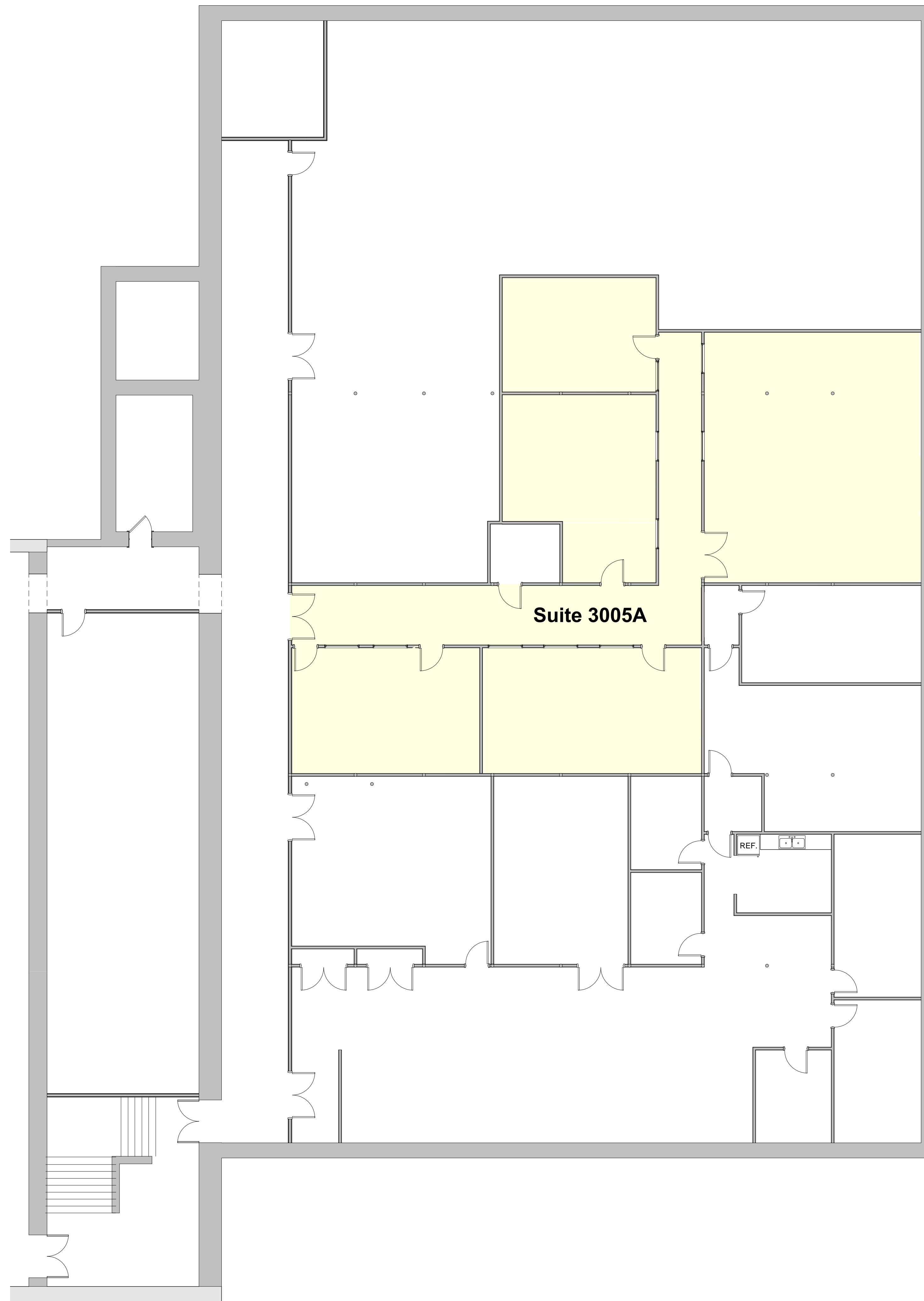
Project No: Project Number Scale: 1/8" = 1'-0"

Project Manager: Production Leader:

Project Architect: Peer Reviewer:

Drawing Number

E1.19



① THIRD FLOOR PLAN-
 1/8" = 1'-0"

DISCLAIMER: ALL BUILDOUT IS BASED ON BRADY SULLIVAN PROPERTIES "CONSTRUCTION STANDARDS". BRADY SULLIVAN PROPERTIES RESERVES THE RIGHT TO ISSUE A CHANGE ORDER FOR ADDITIONAL WORK NOT INCLUDED IN DRAWINGS.

7/20/2017 1:06:26 PM