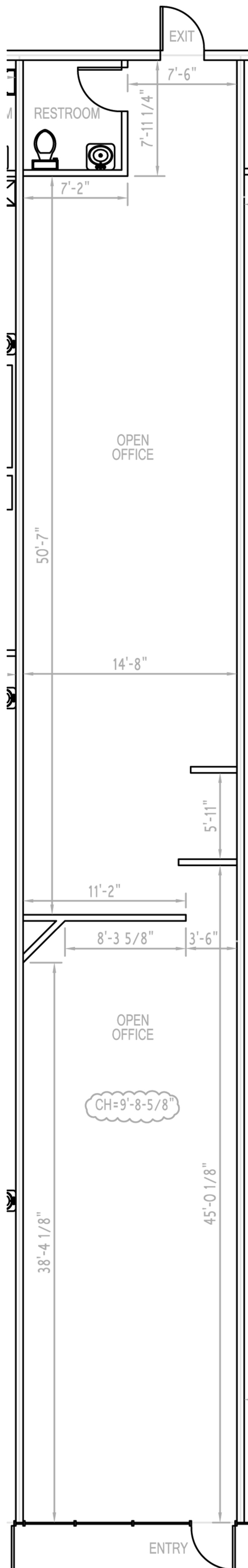
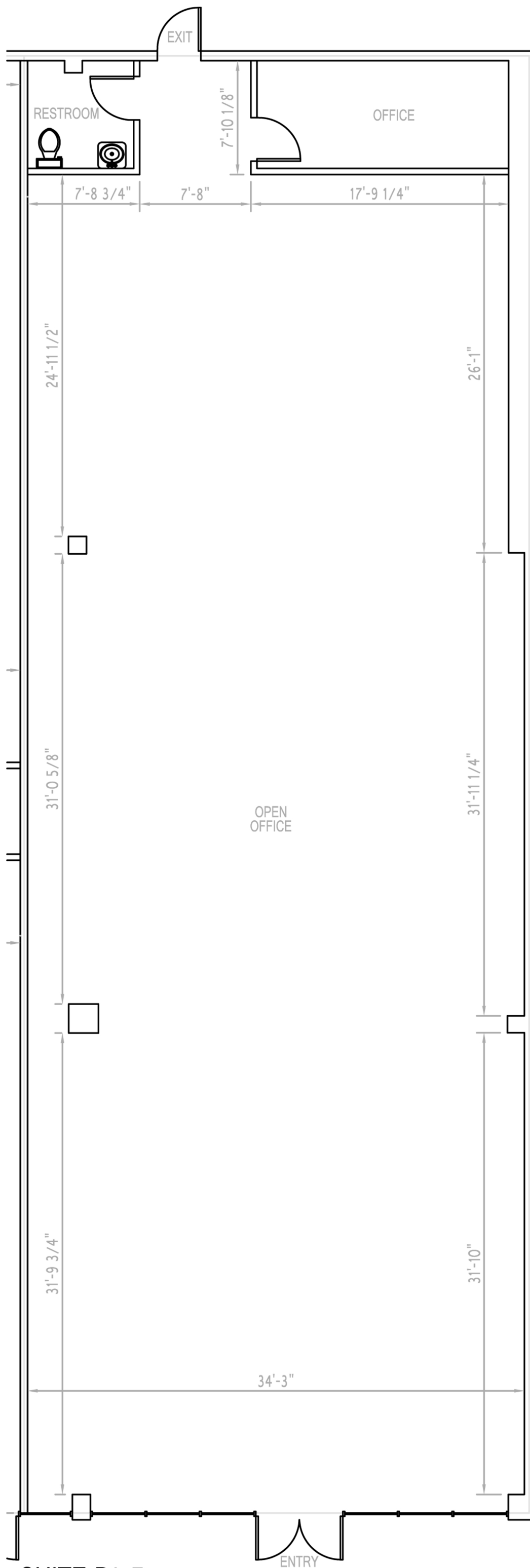


SUITE B1-5
1,180 USF



SUITE B1-6
 1,525 USF



SUITE B1-7
3,500 USF



Brady Sullivan Properties
 670 N. Commercial Street
 Manchester, nh 03101
 603.622.6223



Owner
**BRADY SULLIVAN
 PROPERTIES**
 MANCHESTER
 NH

Project
**MANCHESTER
 COMMONS**
 MANCHESTER NH

Seals

| Issues | |
|--------|-------------|
| Date | Description |
| | |
| | |
| | |
| | |

| Revisions | |
|-----------|------|
| No. | Date |
| | |
| | |
| | |
| | |

Drawing Title
SUITE D1-3
3,285 RSF

| | |
|-----------------------|---------------------|
| Issue Date: | 4-24-2017 |
| Project No: | Scale: 1/4" = 1'-0" |
| Project Manager: | Production Leader: |
| Project Architect: CL | Peer Reviewer: CL |

Drawing Number
A0.4



1 SUITE D1-3
 1/4" = 1'-0"

DISCLAIMER: ALL BUILDOUT IS BASED ON BRADY SULLIVAN PROPERTIES "CONSTRUCTION STANDARDS".
 BRADY SULLIVAN PROPERTIES RESERVES THE RIGHT TO ISSUE A CHANGE ORDER FOR ADDITIONAL WORK
 NOT INCLUDED IN DRAWINGS.

4/24/2017 11:19:50 AM



Brady Sullivan Properties
 670 N. Commercial Street
 Manchester, nh 03101
 603.622.6223



Owner
**BRADY SULLIVAN
 PROPERTIES**
 MANCHESTER
 NH

Project
**MANCHESTER
 COMMONS**
 MANCHESTER NH

Seals

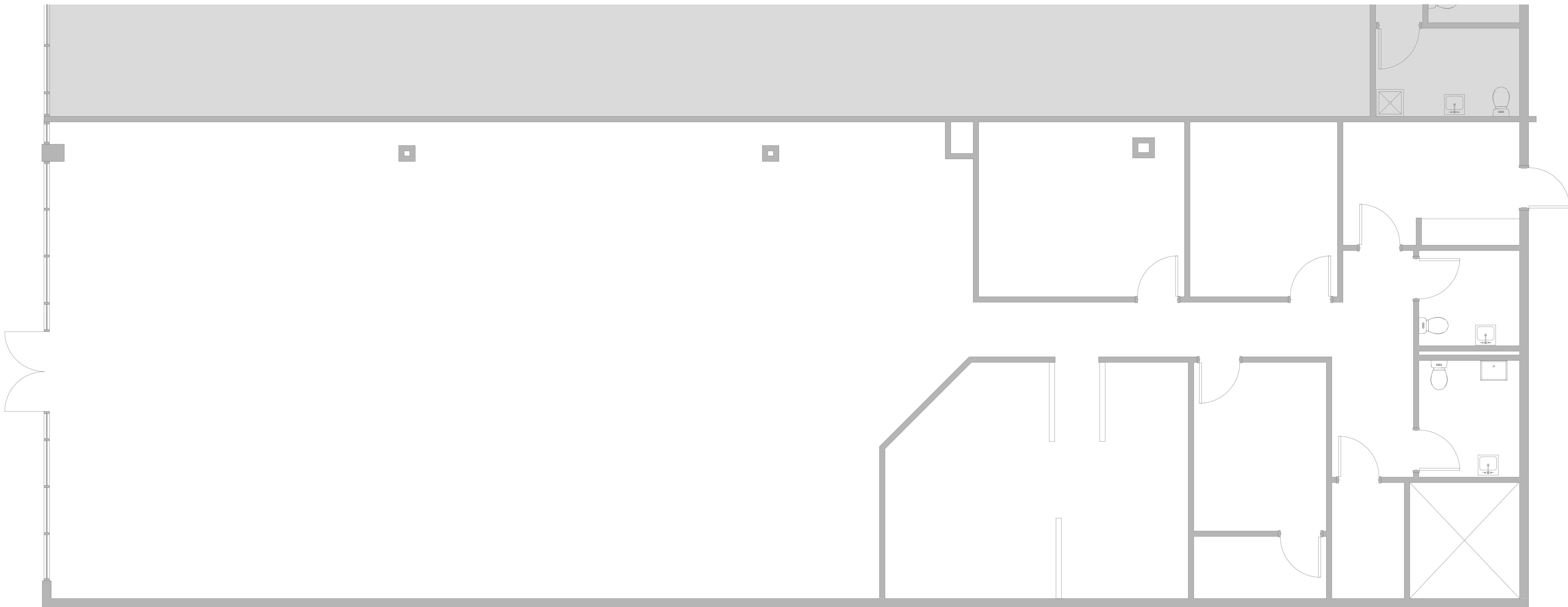
| Issues | |
|--------|-------------|
| Date | Description |
| | |
| | |
| | |
| | |

| Revisions | | |
|-----------|------|-------------|
| No. | Date | Description |
| | | |
| | | |
| | | |
| | | |

Drawing Title
SUITE D1-4
3,964 RSF

| | |
|-----------------------|---------------------|
| Issue Date: | 7-27-2017 |
| Project No: | Scale: 1/4" = 1'-0" |
| Project Manager: | Production Leader: |
| Project Architect: CL | Peer Reviewer: CL |

Drawing Number
A0.5



DISCLAIMER: ALL BUILDOUT IS BASED ON BRADY SULLIVAN PROPERTIES "CONSTRUCTION STANDARDS".
 BRADY SULLIVAN PROPERTIES RESERVES THE RIGHT TO ISSUE A CHANGE ORDER FOR ADDITIONAL WORK
 NOT INCLUDED IN DRAWINGS.

7/27/2017 3:54:18 PM



Brady Sullivan Properties
670 N. Commercial Street
Manchester, nh 03101
603.622.6223

PROPERTY OF THE UNITED STATES GOVERNMENT
COPYING, DISSEMINATION, OR DISTRIBUTION OF
THESE DRAWINGS, PLANS, OR SPECIFICATIONS TO
UNAUTHORIZED PERSONS IS PROHIBITED
Do not remove this notice. Properly destroy documents
when no longer
needed.

© 2015 Brady Sullivan Properties

Owner
**BRADY SULLIVAN
PROPERTIES**
MANCHESTER
NH

Project
**MANCHESTER
COMMONS**
MANCHESTER NH

Seals

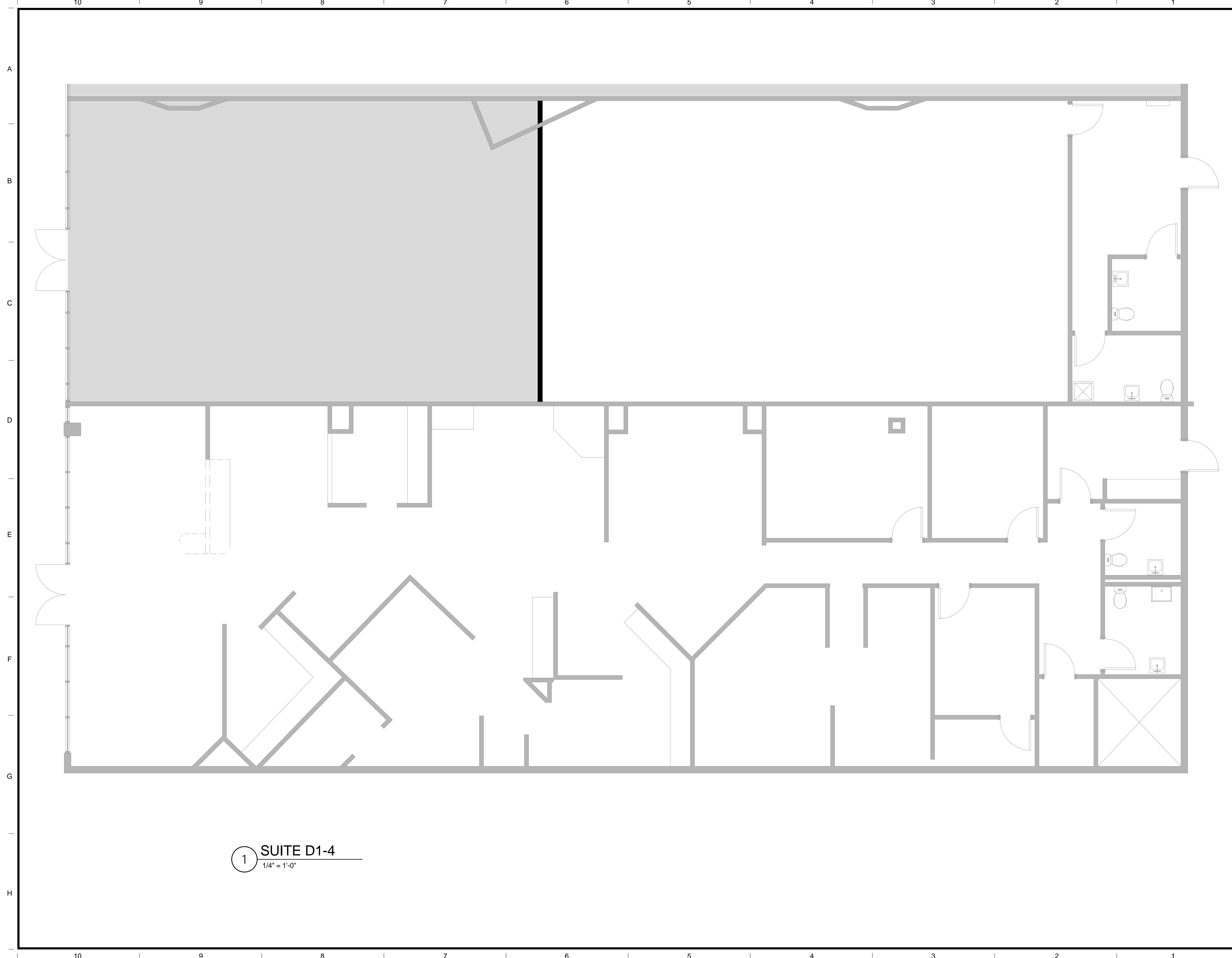
| Issues | |
|--------|-------------|
| Date | Description |
| | |
| | |
| | |
| | |

| Revisions | | |
|-----------|------|-------------|
| No. | Date | Description |
| | | |
| | | |
| | | |
| | | |

Drawing Title
SUITE D1-4
5,900 USF

| | |
|-----------------------|---------------------|
| Issue Date: | 1-10-2017 |
| Project No: | Scale: 1/4" = 1'-0" |
| Project Manager: | Production Leader: |
| Project Architect: CL | Peer Reviewer: CL |

Drawing Number
A0.5



1 SUITE D1-4
1/4" = 1'-0"

1/10/2017 11:38:55 AM



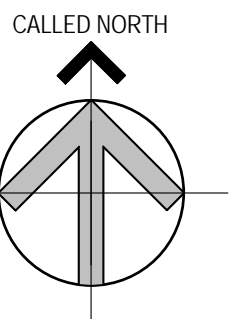
Brady Sullivan Properties
670 N. Commercial Street
Manchester, nh 03101
603.622.6223

PROPERTY OF THE UNITED STATES GOVERNMENT
COPYING, DISSEMINATION, OR DISTRIBUTION OF
THESE DRAWINGS, PLANS, OR SPECIFICATIONS TO
UNAUTHORIZED PERSONS IS PROHIBITED
Do not remove this notice. Properly destroy documents
when no longer
needed.

© 2015 Brady Sullivan Properties

Owner
**BRADY SULLIVAN
PROPERTIES**
MANCHESTER
NH

Project
**MANCHESTER
COMMONS**
MANCHESTER NH



Seals

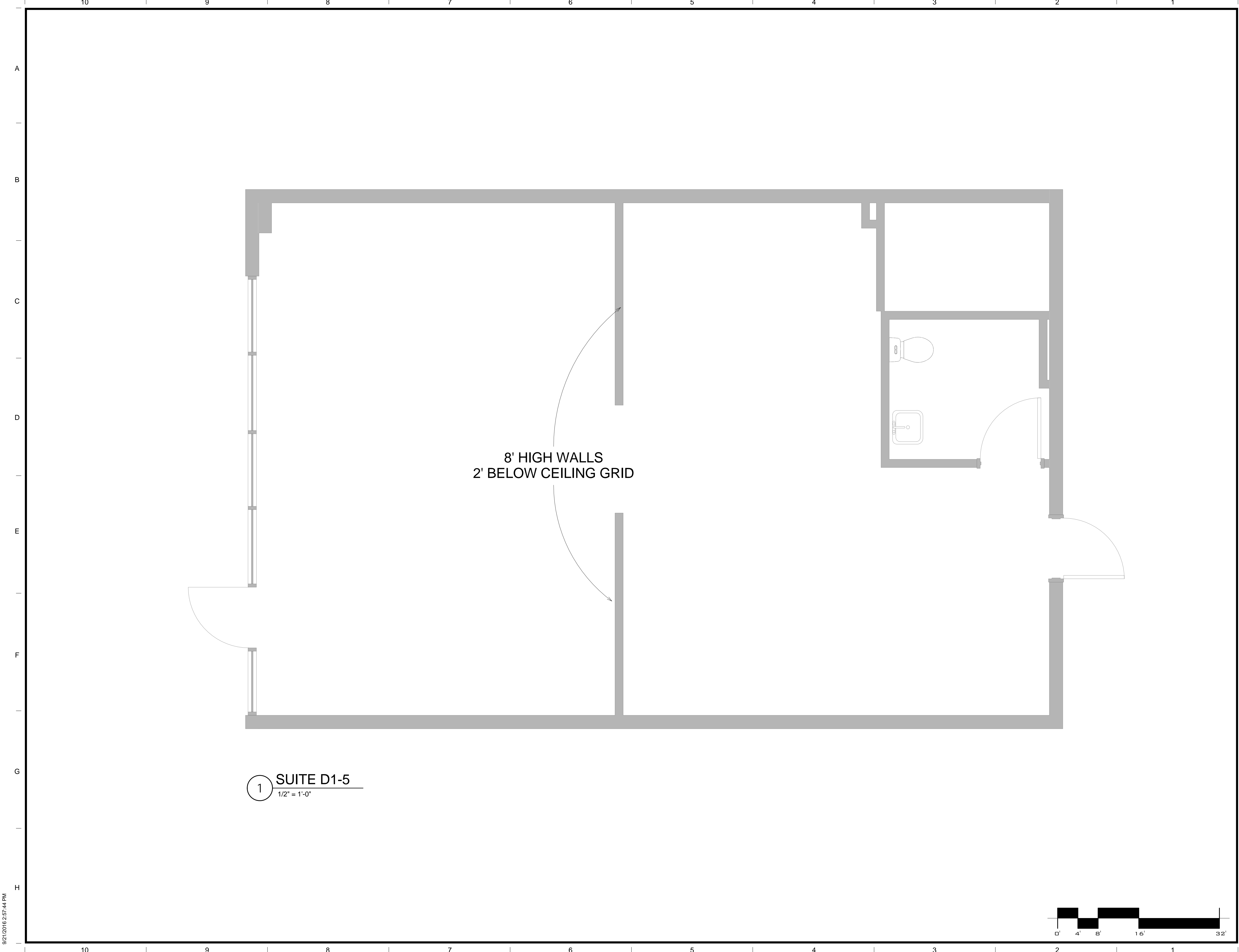
| Issues | |
|--------|-------------|
| Date | Description |
| | |
| | |
| | |
| | |

| Revisions | | |
|-----------|------|-------------|
| No. | Date | Description |
| | | |
| | | |
| | | |
| | | |

Drawing Title
SUITE D1-5
1,042 RSF

| | |
|-----------------------|---------------------|
| Issue Date: | |
| Project No: | Scale: 1/2" = 1'-0" |
| Project Manager: | Production Leader: |
| Project Architect: CL | Peer Reviewer: CL |

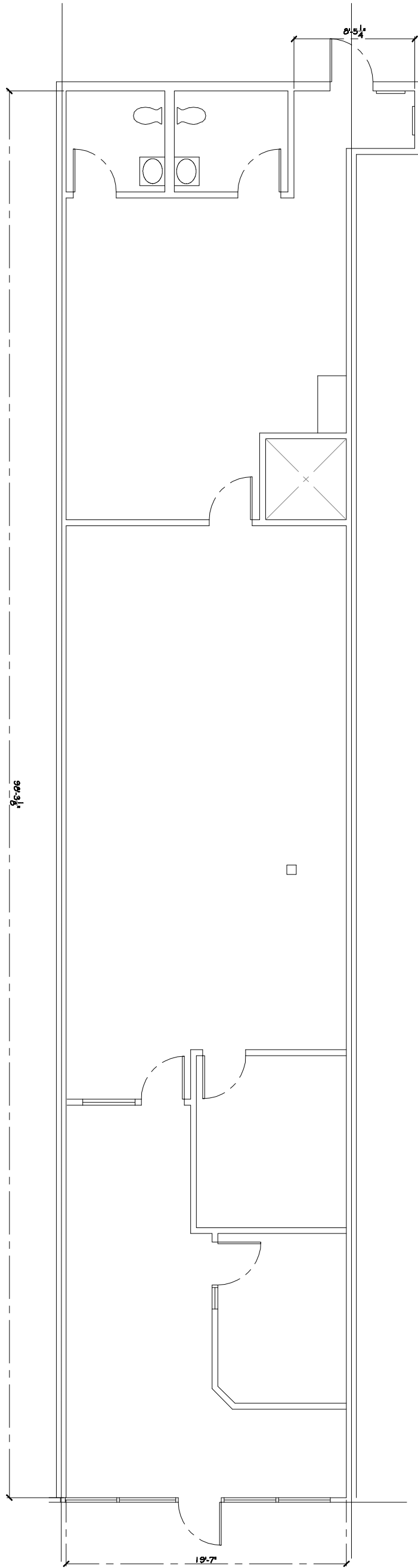
Drawing Number
A0.7



1 SUITE D1-5
1/2" = 1'-0"



9/21/2016 2:57:44 PM



SHEET TITLE

EXISTING CONDITION PLAN

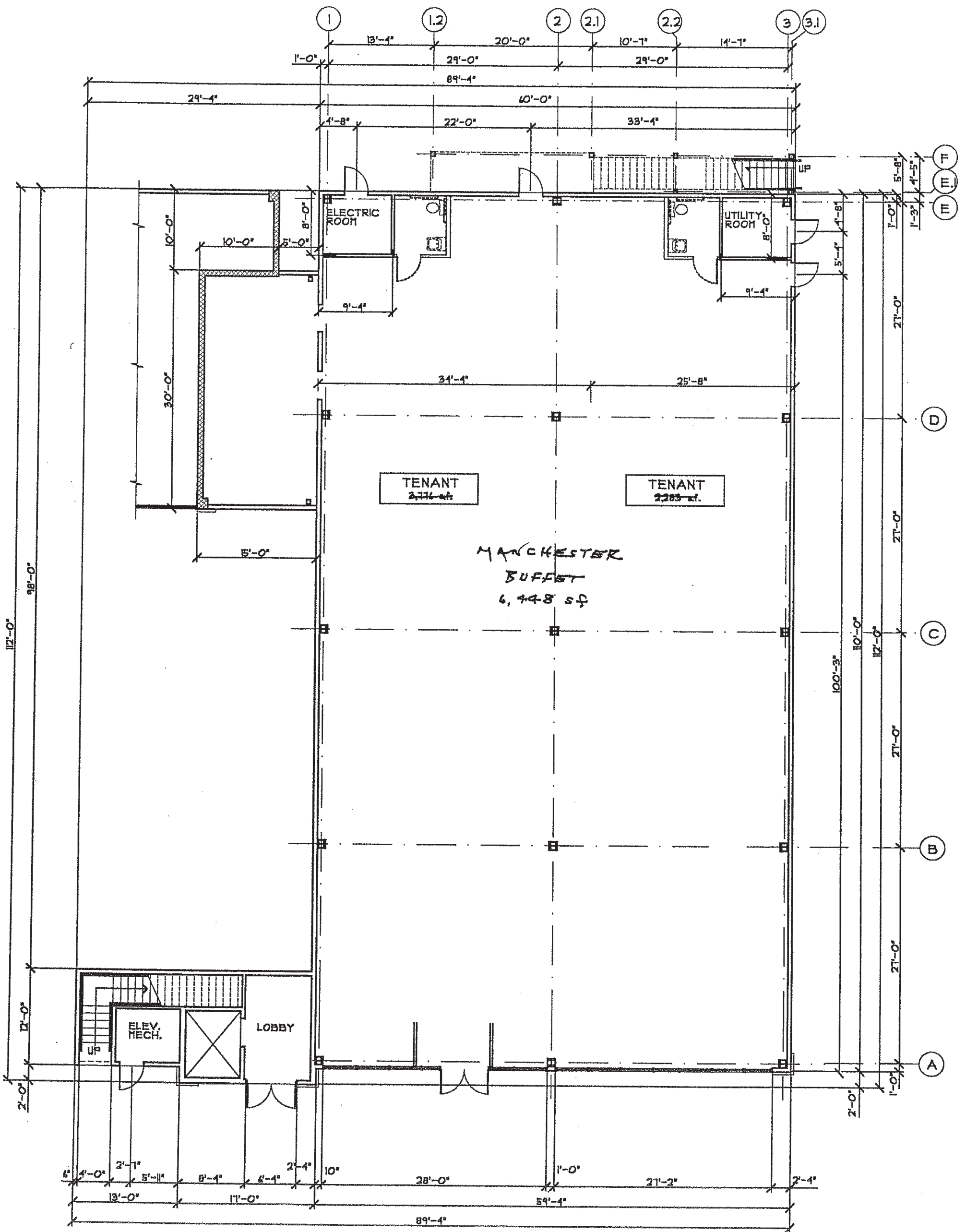
PROJECT

PRIMERICA-MANHESTER COMMONS

REF:
 PROJECT NO: ----
 DATE:
 CAD DWG FILE: PRIMERICA-BASE
 PLAN_092811.DWG
 DRAWN BY: PHB
 CHK'D BY: PHB

DRAWING

A-1.0



1 BUILDING E
 FIRST FLOOR PLAN
 A1 SCALE: 1/8" = 1'-0"
 PLAN NORTH

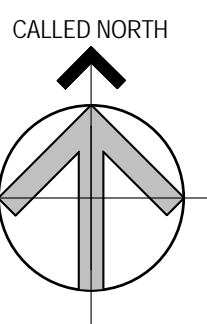


Brady Sullivan Properties
 670 N. Commercial Street
 Manchester, nh 03101
 603.622.6223



Owner
**BRADY SULLIVAN
 PROPERTIES**
 MANCHESTER
 NH

Project
**MANCHESTER
 COMMONS**
 MANCHESTER NH



Seals
PROGRESS PRINT

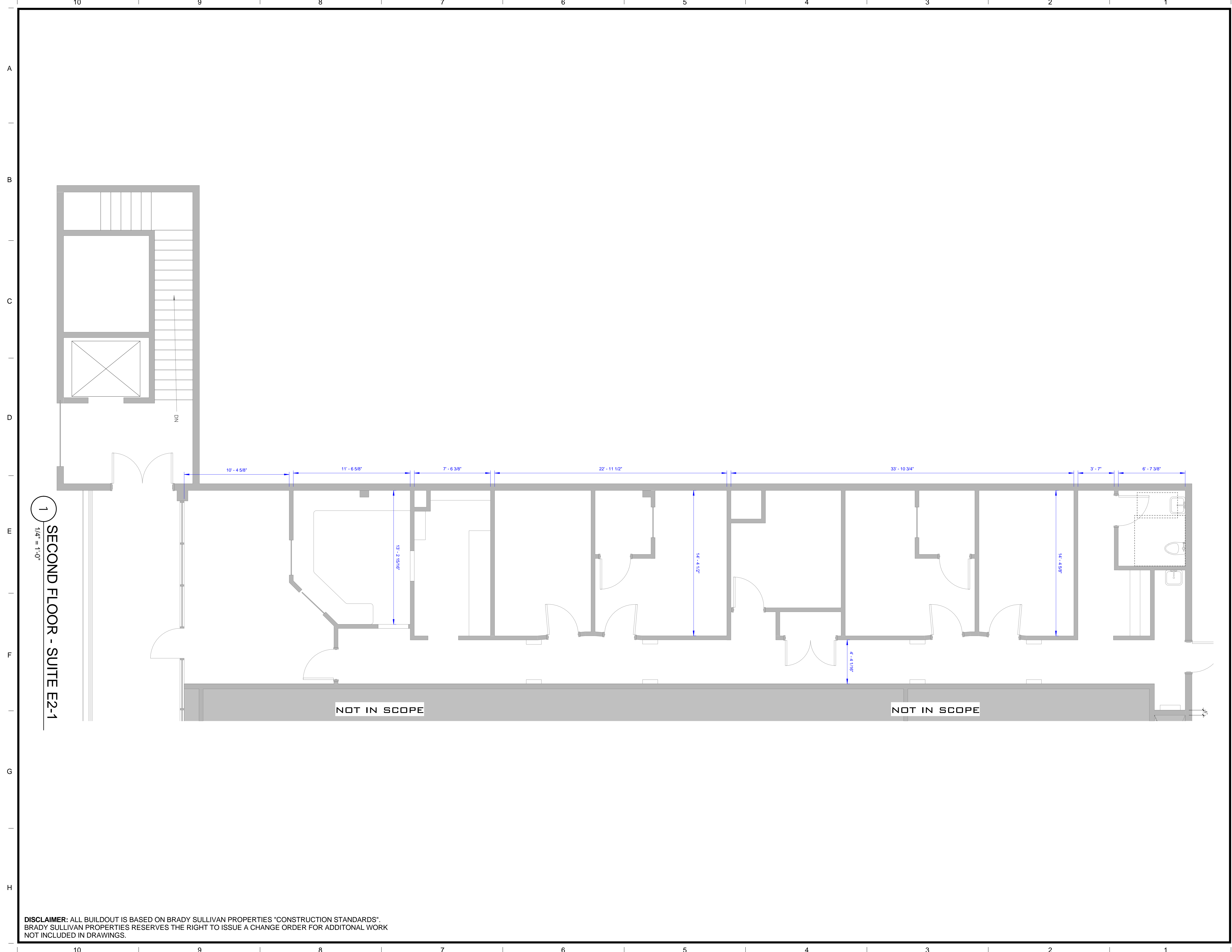
| Issues | |
|--------|-------------|
| Date | Description |
| | |
| | |
| | |
| | |

| Revisions | | |
|-----------|------|-------------|
| No. | Date | Description |
| | | |
| | | |
| | | |
| | | |

Drawing Title
SUITE E2-1
2,353 RSF

| | |
|--------------------|---------------------|
| Issue Date: | 4-24-2017 |
| Project No: | Scale: 1/4" = 1'-0" |
| Project Manager: | Production Leader: |
| Project Architect: | Peer Reviewer: |

Drawing Number
A.109



1
 1/4" = 1'-0"
SECOND FLOOR - SUITE E2-1

DISCLAIMER: ALL BUILDOUT IS BASED ON BRADY SULLIVAN PROPERTIES "CONSTRUCTION STANDARDS".
 BRADY SULLIVAN PROPERTIES RESERVES THE RIGHT TO ISSUE A CHANGE ORDER FOR ADDITIONAL WORK
 NOT INCLUDED IN DRAWINGS.

4/24/2017 11:25:21 AM



Brady Sullivan Properties
 670 N. Commercial Street
 Manchester, nh 03101
 603.622.6223



Owner
**BRADY SULLIVAN
 PROPERTIES**
 MANCHESTER
 NH

Project
**MANCHESTER
 COMMONS**
 MANCHESTER NH

Seals
 PROGRESS PRINT

| Issues | |
|--------|-------------|
| Date | Description |
| | |
| | |
| | |
| | |

| Revisions | | |
|-----------|------|-------------|
| No. | Date | Description |
| | | |
| | | |
| | | |
| | | |

Drawing Title
SUITE E2-2

3,993 RSF

Issue Date: 4-24-2017

Project No: Scale: 1/4" = 1'-0"

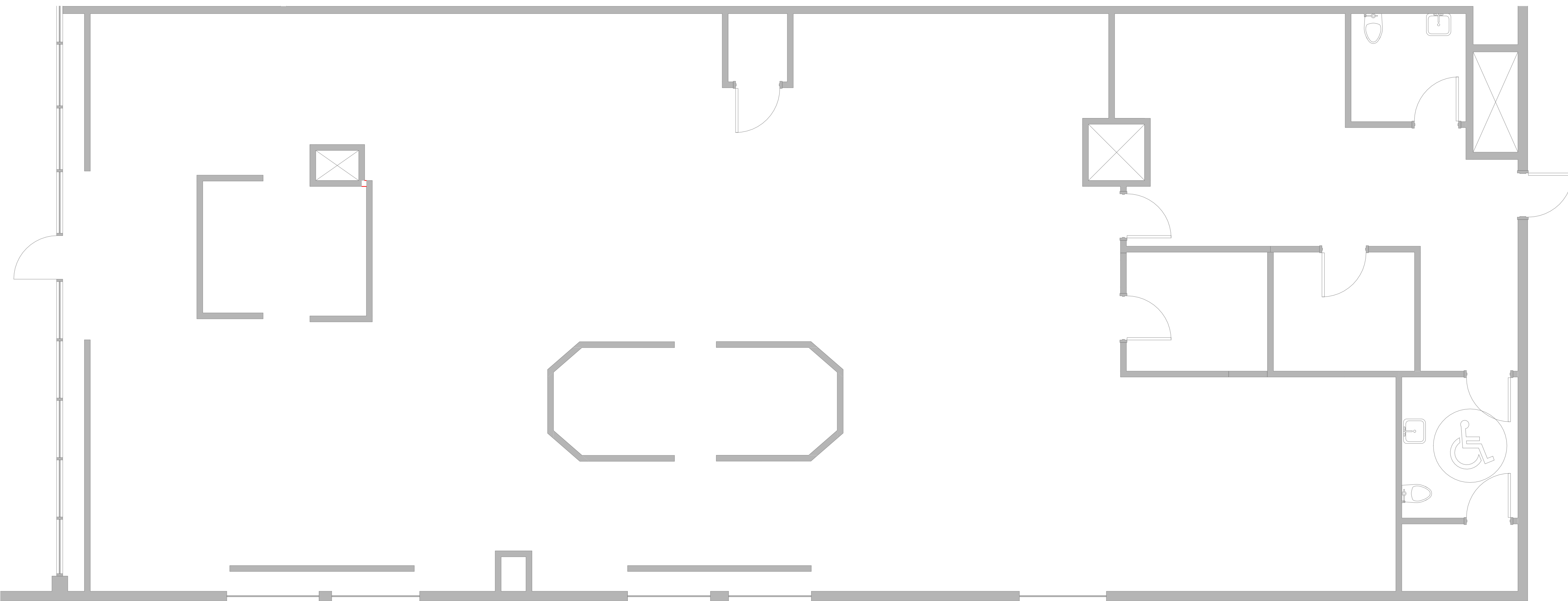
Project Manager: Production Leader:

Project Architect: Peer Reviewer:

Drawing Number

A.108

2
 1/4" = 1'-0"
SECOND FLOOR - SUITE E2-2



DISCLAIMER: ALL BUILDOUT IS BASED ON BRADY SULLIVAN PROPERTIES "CONSTRUCTION STANDARDS".
 BRADY SULLIVAN PROPERTIES RESERVES THE RIGHT TO ISSUE A CHANGE ORDER FOR ADDITIONAL WORK
 NOT INCLUDED IN DRAWINGS.