



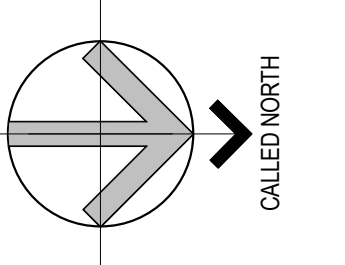
Brady Sullivan Properties
 670 N. Commercial Street
 Manchester, nh 03101
 603.622.6223



Owner
BRADY SULLIVAN PROPERTIES

Project
JEFFERSON MILL

670 N. COMMERCIAL ST.
 MANCHESTER, NH



Seals
 0%

Issues	Date	Description

Revisions	No.	Date	Description

Drawing Title
LOWER LEVEL SUITES

Issue Date: 11-5-2019

Project No: 000-0000 Scale: As indicated

Project Manager: Production Leader:

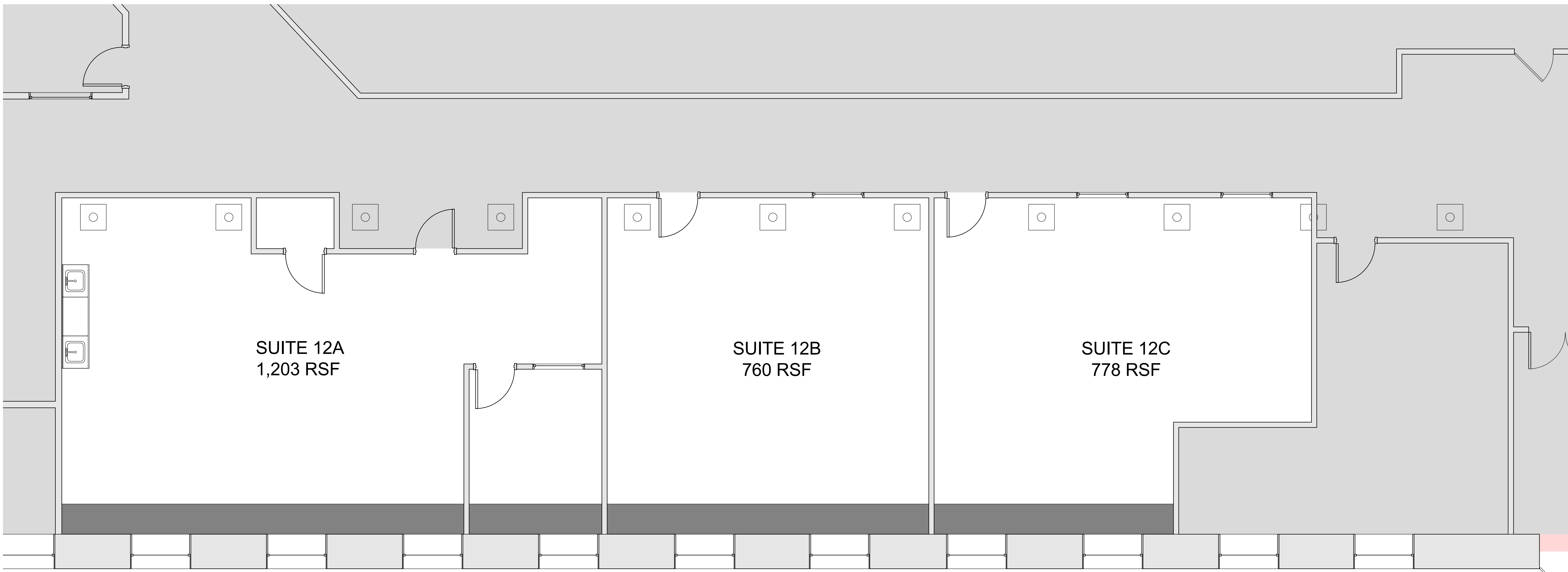
Project Architect: Peer Reviewer:

Drawing Number

B1-8

LEGEND

	NOT IN SCOPE		PROPOSED ITEMS (HEAVY LINE WEIGHT)
	EXISTING ITEMS		EXISTING DOOR AND FRAME TO REMAIN
	NEW DOOR AND FRAME		DEMO ITEMS



1 LOWER LEVEL SUITES
 1/4" = 1'-0"

11/15/2020 11:28:39 AM