



Brady Sullivan Properties
 670 N. Commercial Street
 Manchester, nh 03101
 603.622.6223



Owner
**BRADY SULLIVAN
 PROPERTIES**
 MANCHESTER
 NH

Project
JEFFERSON MILL
 MANCHESTER NH

SUITE 403
27,351 RSF

Seals

Issues	
Date	Description

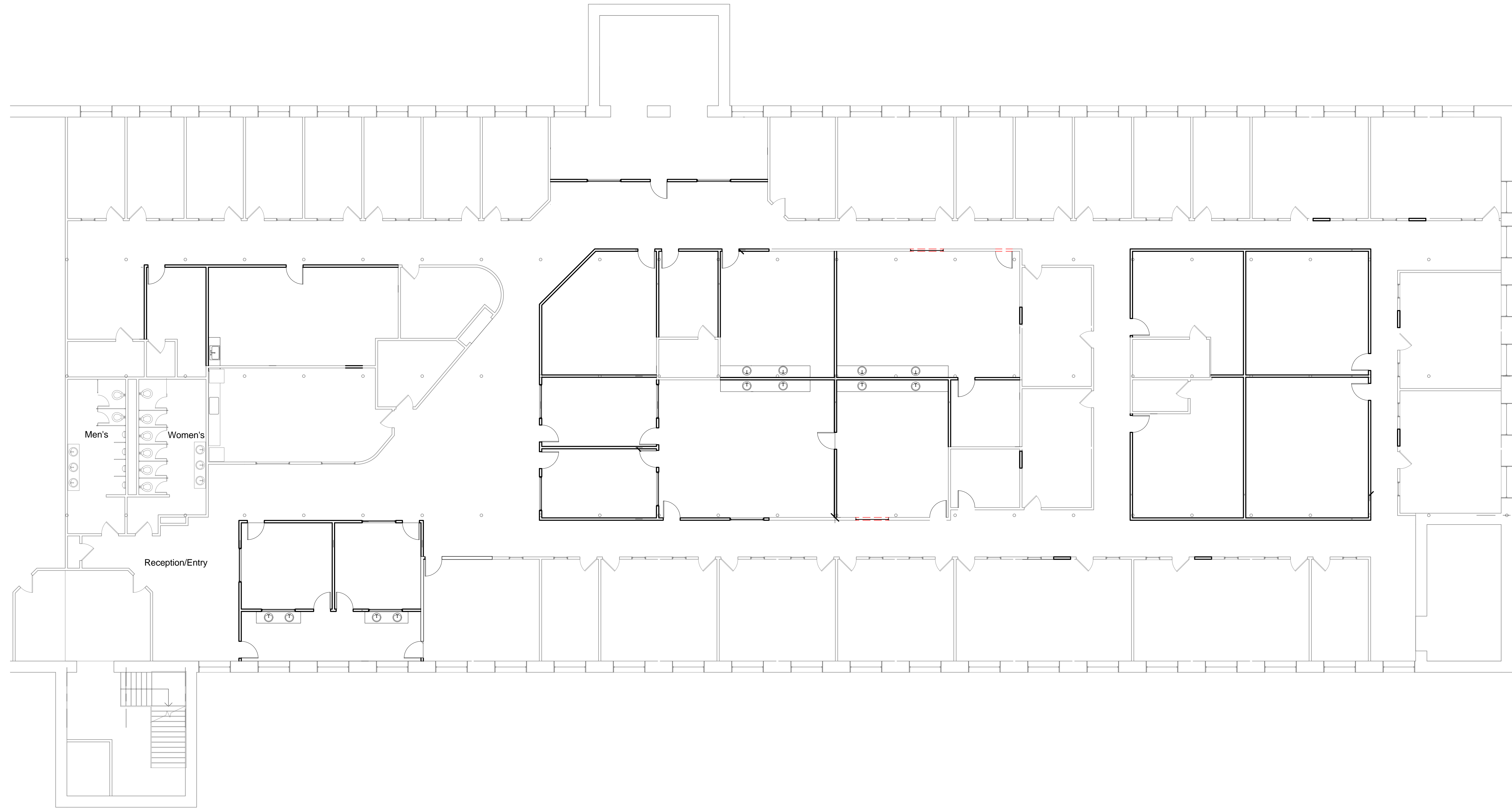
Revisions		
No.	Date	Description

Drawing Title

Issue Date:	4-24-2017
Project No:	Scale: 1/8" = 1'-0"
Project Manager:	Production Leader:
Project Architect: RO	Peer Reviewer: CL

Drawing Number

A.106



DISCLAIMER: ALL BUILDOUT IS BASED ON BRADY SULLIVAN PROPERTIES "CONSTRUCTION STANDARDS".
 BRADY SULLIVAN PROPERTIES RESERVES THE RIGHT TO ISSUE A CHANGE ORDER FOR ADDITIONAL WORK
 NOT INCLUDED IN DRAWINGS.

4/24/2017 11:01:14 AM