



Brady Sullivan Properties
 670 N. Commercial Street
 Manchester, nh 03101
 603.622.6223



Owner
**BRADY SULLIVAN
 PROPERTIES**
 MANCHESTER
 NH

Project
JEFFERSON MILL
 MANCHESTER NH

Seals
 PROGRESS PRINT

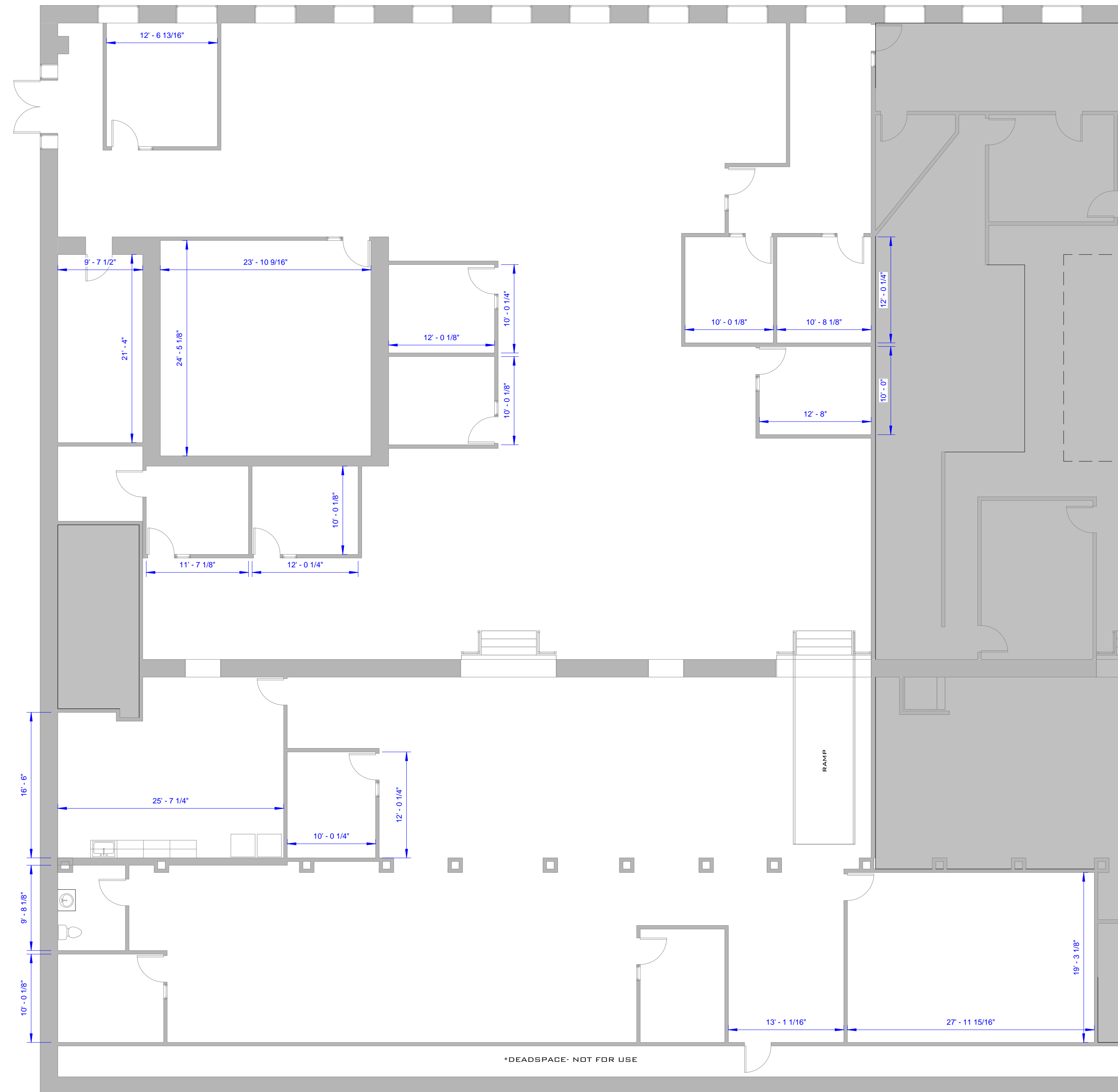
Issues	
Date	Description

Revisions		
No.	Date	Description

Drawing Title
SUITE 10
 12,207 RSF

Issue Date: 4-24-2017
 Project No: Scale: 1/8" = 1'-0"
 Project Manager: Production Leader:
 Project Architect: RO Peer Reviewer: CL

Drawing Number
A.106



1 LOWER LEVEL - SUITE 10
 1/8" = 1'-0"

DISCLAIMER: ALL BUILDOUT IS BASED ON BRADY SULLIVAN PROPERTIES "CONSTRUCTION STANDARDS". BRADY SULLIVAN PROPERTIES RESERVES THE RIGHT TO ISSUE A CHANGE ORDER FOR ADDITIONAL WORK NOT INCLUDED IN DRAWINGS.