



Brady Sullivan Properties  
 670 N. Commercial Street  
 Manchester, nh 03101  
 603.622.6223



Owner  
**BRADY SULLIVAN PROPERTIES**

Project  
**JEFFERSON MILL**

670 N. COMMERCIAL ST.  
 MANCHESTER, NH

Seals  
 0%

ISSUES	Date	Description

Revisions	No.	Date	Description

Drawing Title  
**FIRST FLOOR  
 PLAN - SUITE 104  
 15,368 RSF**

Issue Date: 1-11-2021

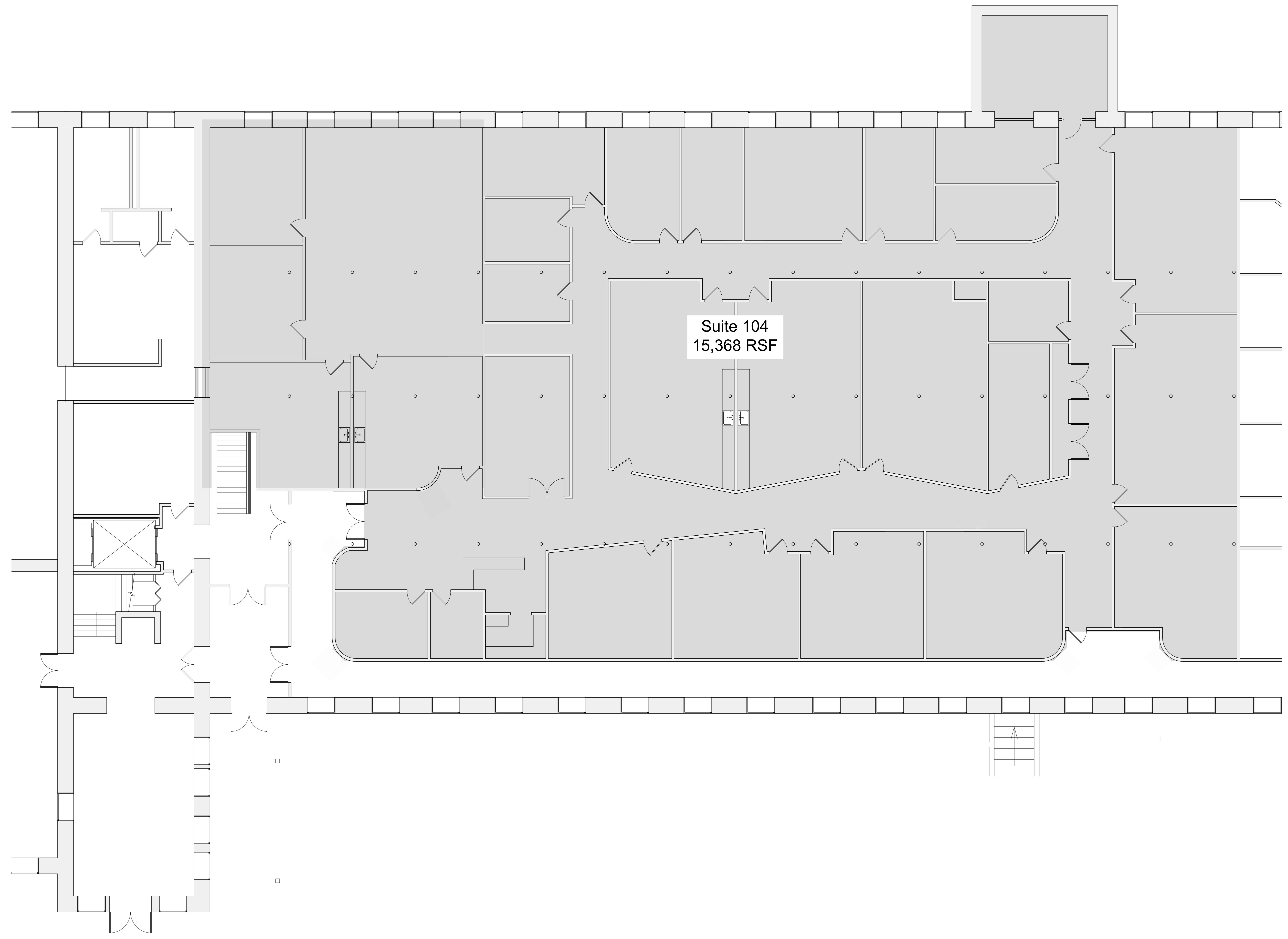
Project No: 000-0000 Scale: 1/8" = 1'-0"

Project Manager: Production Leader:

Project Architect: Peer Reviewer:

Drawing Number

**A1-01.2**



1 FIRST FLOOR - SUITE 104  
 1/8" = 1'-0"

1/11/2021 10:09:42 AM