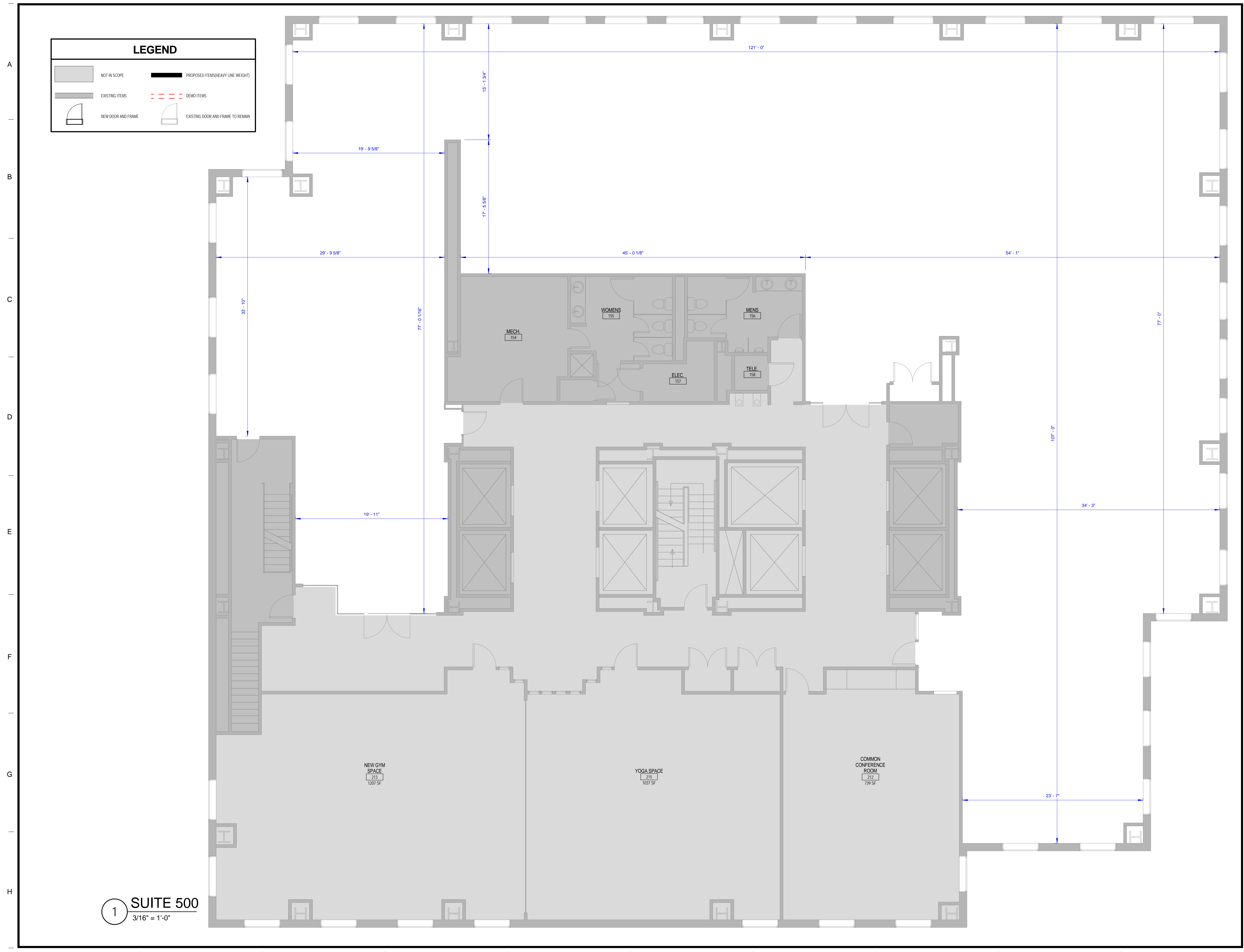


LEGEND

	NOT IN SCOPE		PROPOSED ITEMS (HEAVY LINE WEIGHT)
	EXISTING ITEMS		DEMO ITEMS
	NEW DOOR AND FRAME		EXISTING DOOR AND FRAME TO REMAIN



Brady Sullivan Properties
670 N. Commercial Street
Manchester, nh 03101
603.622.6223



Owner
BRADY SULLIVAN PROPERTIES
MANCHESTER NH

Project
900 ELM STREET
MANCHESTER NH

SUITE 500
14,266 RSF
(Full Floor)

Seals
PROGRESS PRINT

Issues

Date	Description

Revisions

No.	Date	Description

Drawing Title

Issue Date: 4-25-2019
Project No: Scale: As indicated
Project Manager: Production Leader:
Project Architect: Peer Reviewer:

Drawing Number

A.106

1 SUITE 500
3/16" = 1'-0"