



Brady Sullivan Properties
670 N. Commercial Street
Manchester, nh 03101
603.622.6223



Owner
**BRADY SULLIVAN
PROPERTIES**
MANCHESTER NH

Project
900 ELM STREET
MANCHESTER NH

Seals
PROGRESS PRINT

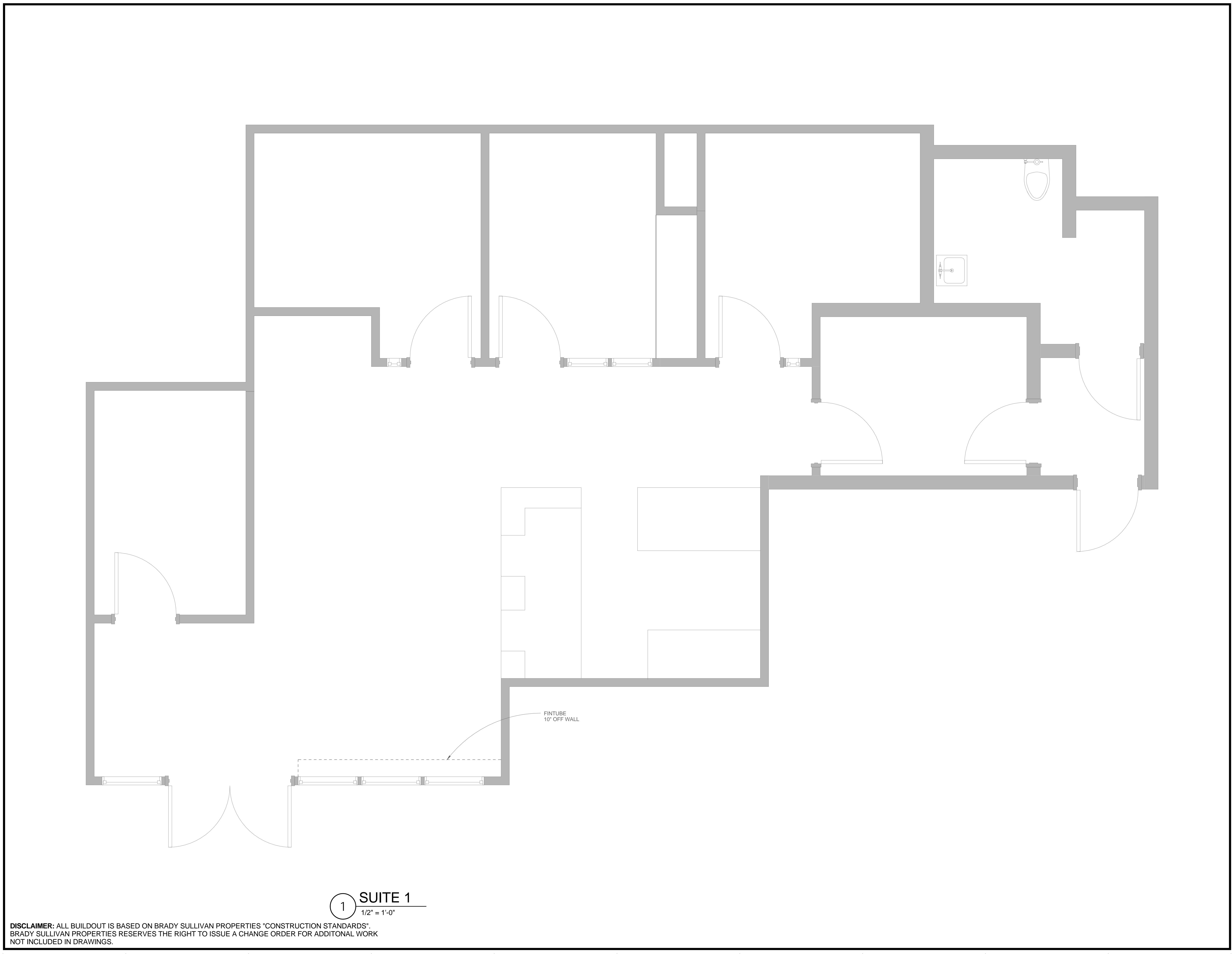
Issues	
Date	Description

Revisions		
No.	Date	Description

Drawing Title
SUITE 101
1,245 RSF

Issue Date:	4-24-2017
Project No:	Scale: 1/2" = 1'-0"
Project Manager:	Production Leader:
Project Architect:	Peer Reviewer:

Drawing Number
A.106



1 SUITE 1
1/2" = 1'-0"

DISCLAIMER: ALL BUILDOUT IS BASED ON BRADY SULLIVAN PROPERTIES "CONSTRUCTION STANDARDS".
BRADY SULLIVAN PROPERTIES RESERVES THE RIGHT TO ISSUE A CHANGE ORDER FOR ADDITIONAL WORK
NOT INCLUDED IN DRAWINGS.

4/24/2017 11:31:20 AM



Brady Sullivan Properties
670 N. Commercial Street
Manchester, nh 03101
603.622.6223

Notice:
This drawing is the property of Brady Sullivan Properties. The use, re-use or reproduction of this drawing for any purpose whatsoever without an expressed written agreement between BSP and the user is prohibited.
Rights to use the information on this sheet are not transferred until payment has been received for services rendered. Any rights so granted are non-transferable to other parties without the prior expressed written consent of BSP.
© 2015 Brady Sullivan Properties

Owner
BRADY SULLIVAN PROPERTIES
MANCHESTER NH

Project
900 ELM STREET
MANCHESTER NH

Seals
PROGRESS PRINT

Issues	
Date	Description

Revisions		
No.	Date	Description

Drawing Title
SUITE 500
14,266 RSF

Issue Date:	
Project No:	Scale: 1/8" = 1'-0"
Project Manager:	Production Leader:
Project Architect:	Peer Reviewer:

Drawing Number
A.106



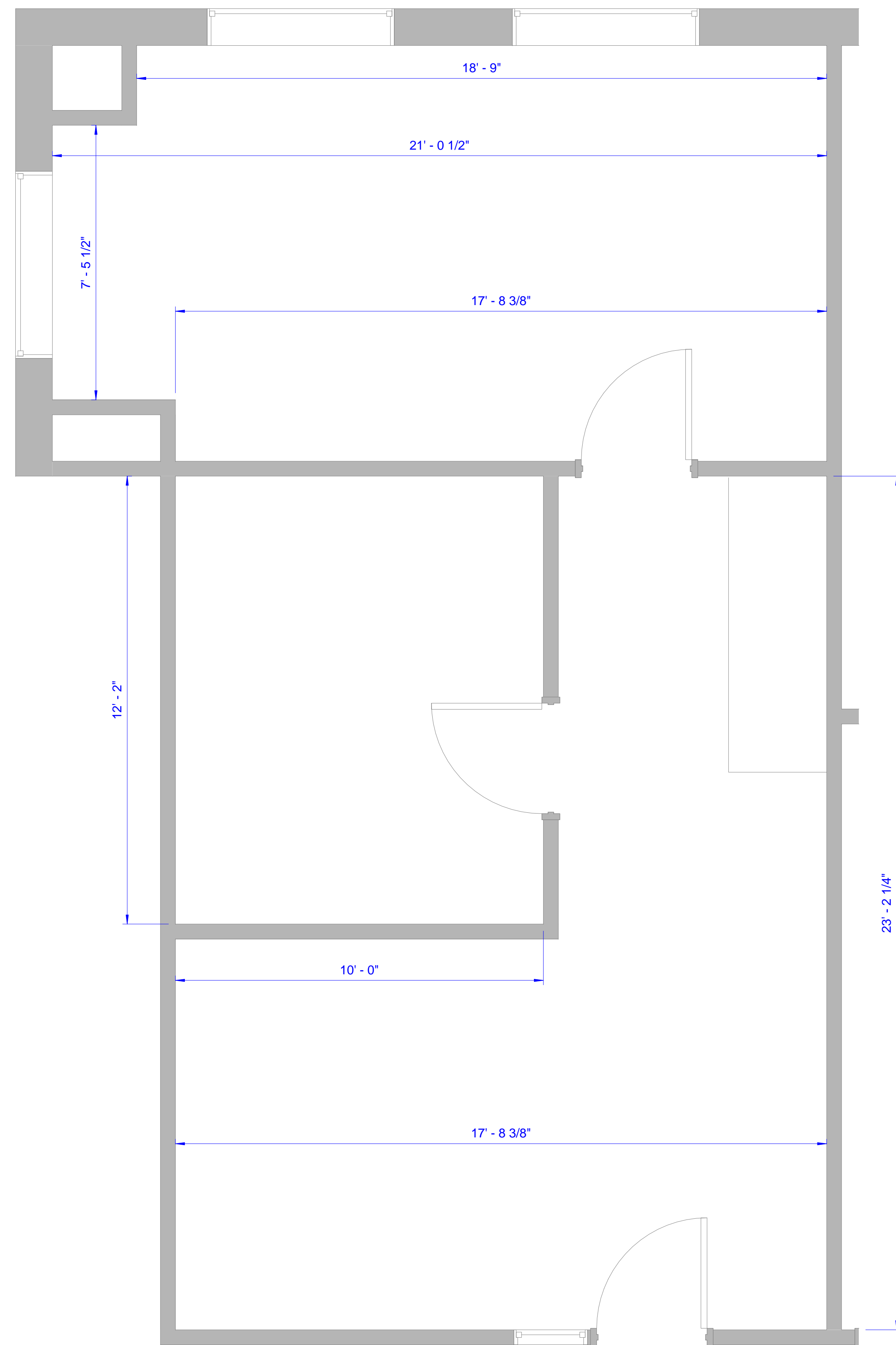
1 SUITE 500
1/8" = 1'-0"

DISCLAIMER: ALL BUILDOUT IS BASED ON BRADY SULLIVAN PROPERTIES "CONSTRUCTION STANDARDS". BRADY SULLIVAN PROPERTIES RESERVES THE RIGHT TO ISSUE A CHANGE ORDER FOR WORK NOT INCLUDED IN DRAWINGS. **2,487 USF**

5/18/2016 9:15:30 AM

10 9 8 7 6 5 4 3 2 1

A
B
C
D
E
F
G
H



1 SUITE 605
1/2" = 1'-0"

DISCLAIMER: ALL BUILDOUT IS BASED ON BRADY SULLIVAN PROPERTIES "CONSTRUCTION STANDARDS". BRADY SULLIVAN PROPERTIES RESERVES THE RIGHT TO ISSUE A CHANGE ORDER FOR ADDITIONAL WORK NOT INCLUDED IN DRAWINGS.

3/16/2017 11:32:27 AM



Brady Sullivan Properties
670 N. Commercial Street
Manchester, nh 03101
603.622.6223



Owner
BRADY SULLIVAN PROPERTIES
MANCHESTER NH

Project
900 ELM STREET
MANCHESTER NH

Seals
PROGRESS PRINT

Issues	
Date	Description

Revisions		
No.	Date	Description

Drawing Title
SUITE 605
839 RSF

Issue Date:	3-16-2017
Project No:	Scale: 1/2" = 1'-0"
Project Manager:	Production Leader:
Project Architect:	Peer Reviewer:

Drawing Number
A.105

10 9 8 7 6 5 4 3 2 1



Brady Sullivan Properties
 670 N. Commercial Street
 Manchester, nh 03101
 603.622.6223



Owner
**BRADY SULLIVAN
 PROPERTIES**
 MANCHESTER NH

Project
900 ELM STREET
 MANCHESTER NH

Seals
 PROGRESS PRINT

Issues	
Date	Description

Revisions		
No.	Date	Description

Drawing Title
SUITE 703
2,191 RSF

Issue Date:	4-24-2017
Project No:	Scale: 3/8" = 1'-0"
Project Manager:	Production Leader:
Project Architect:	Peer Reviewer:

Drawing Number
A.108



1
 3/8" = 1'-0"
 SUITE 703

DISCLAIMER: ALL BUILDOUT IS BASED ON BRADY SULLIVAN PROPERTIES "CONSTRUCTION STANDARDS".
 BRADY SULLIVAN PROPERTIES RESERVES THE RIGHT TO ISSUE A CHANGE ORDER FOR ADDITIONAL WORK
 NOT INCLUDED IN DRAWINGS.



Brady Sullivan Properties
670 N. Commercial Street
Manchester, nh 03101
603.622.6223



Owner
**BRADY SULLIVAN
PROPERTIES**

Project
8TH FLOOR
900 ELM STREET

Seals 0%

Issues	
Date	Description

Revisions		
No.	Date	Description

Drawing Title
SUITE 801
4,414 RSF

Issue Date: 4-24-2017

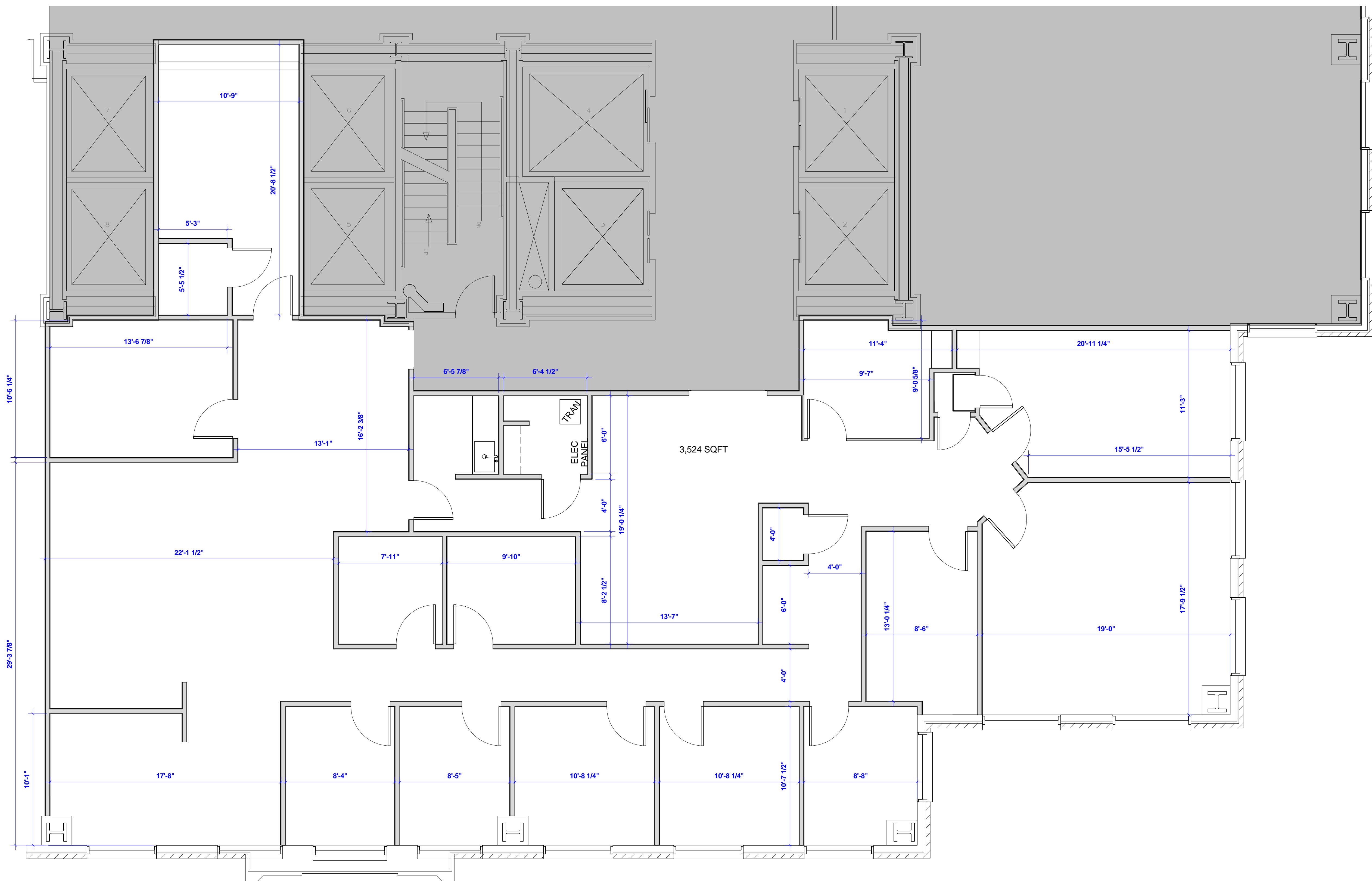
Project No: Project Number Scale: 1/4" = 1'-0"

Project Manager: Production Leader:

Project Architect: Peer Reviewer:

Drawing Number

P1.04



1 SUITE 801
1/4" = 1'-0"

DISCLAIMER: ALL BUILDOUT IS BASED ON BRADY SULLIVAN PROPERTIES "CONSTRUCTION STANDARDS". BRADY SULLIVAN PROPERTIES RESERVES THE RIGHT TO ISSUE A CHANGE ORDER FOR ADDITIONAL WORK NOT INCLUDED IN DRAWINGS.

4/24/2017 11:38:28 AM



Brady Sullivan Properties
670 N. Commercial Street
Manchester, nh 03101
603.622.6223



Owner
**BRADY SULLIVAN
PROPERTIES**

Project
900 ELM STREET

MANCHESTER NH

Seals
PROGRESS PRINT

Issues	
Date	Description

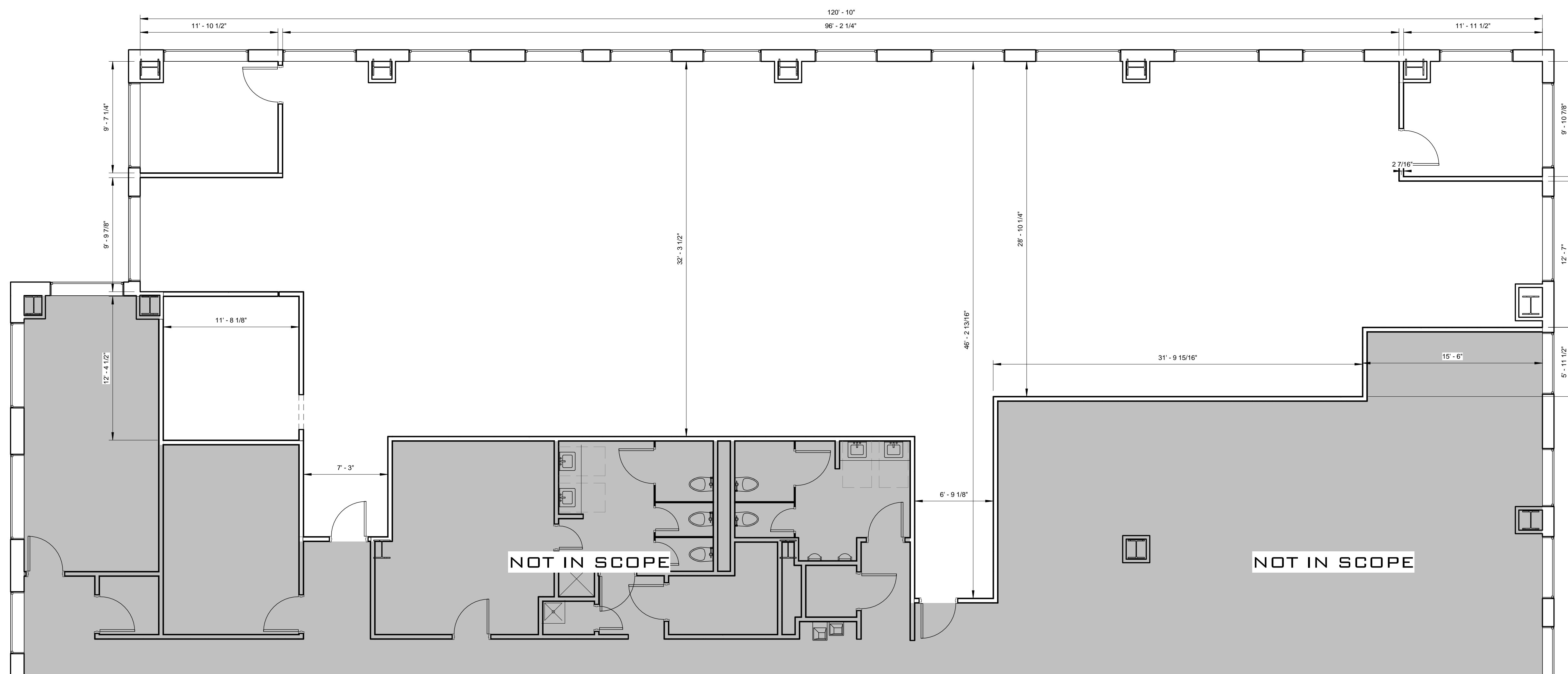
Revisions		
No.	Date	Description

Drawing Title
SUITE 1350

4,885 RSF

Issue Date: 4-24-2017
Project No: Scale: 3/16" = 1'-0"
Project Manager: Production Leader:
Project Architect: Peer Reviewer:





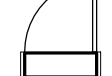

Drawing Number
A.105



1 SUITE 1350
3/16" = 1'-0"

DISCLAIMER: ALL BUILDOUT IS BASED ON BRADY SULLIVAN PROPERTIES "CONSTRUCTION STANDARDS". BRADY SULLIVAN PROPERTIES RESERVES THE RIGHT TO ISSUE A CHANGE ORDER FOR ADDITIONAL WORK NOT INCLUDED IN DRAWINGS.

LEGEND

	NOT IN SCOPE		PROPOSED ITEMS (HEAVY LINE WEIGHT)
	EXISTING ITEMS		EXISTING DOOR AND FRAME TO REMAIN
	NEW DOOR AND FRAME		DEMO ITEMS



1 18TH FLOOR PLAN
3/16" = 1'-0"

DISCLAIMER: ALL BUILDOUT IS BASED ON BRADY SULLIVAN PROPERTIES "CONSTRUCTION STANDARDS". BRADY SULLIVAN PROPERTIES RESERVES THE RIGHT TO ISSUE A CHANGE ORDER FOR ADDITIONAL WORK NOT INCLUDED IN DRAWINGS.



Brady Sullivan Properties
670 N. Commercial Street
Manchester, nh 03101
603.622.6223



Owner
BRADY SULLIVAN PROPERTIES
MANCHESTER, NH

Project
900 ELM STREET
MANCHESTER, NH

Seals

Issues

Date	Description

Revisions

No.	Date	Description

Drawing Title
SUITE 1800

14,709 RSF

Issue Date: 4-24-2017

Project No: Scale: As indicated

Project Manager: Production Leader:

Project Architect: CL Peer Reviewer: CL

Drawing Number

A0.4