



Brady Sullivan Properties
 670 N. Commercial Street
 Manchester, nh 03101
 603.622.6223



Owner
**BRADY SULLIVAN
 PROPERTIES**

Project
1750 ELM STREET
 MANCHESTER NH

Seals

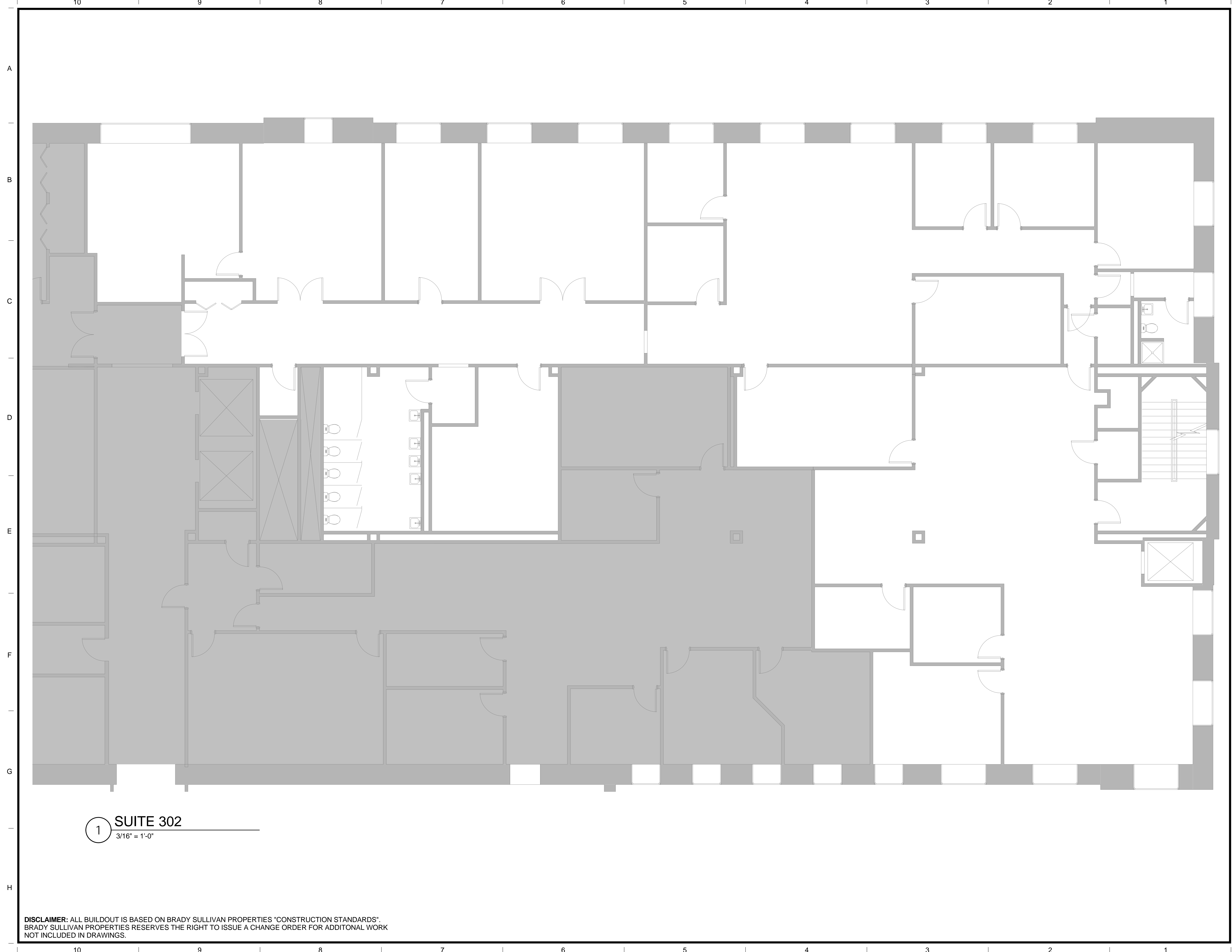
Issues	
Date	Description

Revisions		
No.	Date	Description

Drawing Title
SUITE 302
 9,392 RSF

Issue Date:	4-24-2017
Project No:	Scale: 3/16" = 1'-0"
Project Manager:	Production Leader:
Project Architect: CL	Peer Reviewer: CL

Drawing Number
A0.0



1 SUITE 302
 3/16" = 1'-0"

DISCLAIMER: ALL BUILDOUT IS BASED ON BRADY SULLIVAN PROPERTIES "CONSTRUCTION STANDARDS". BRADY SULLIVAN PROPERTIES RESERVES THE RIGHT TO ISSUE A CHANGE ORDER FOR ADDITIONAL WORK NOT INCLUDED IN DRAWINGS.

4/24/2017 3:30:24 PM