

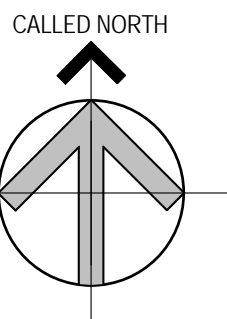


Brady Sullivan Properties
670 N. Commercial Street
Manchester, nh 03101
603.622.6223



Owner
**BRADY SULLIVAN
PROPERTIES**
MANCHESTER NH

Project
1750 Elm Street
MANCHESTER NH



Seals

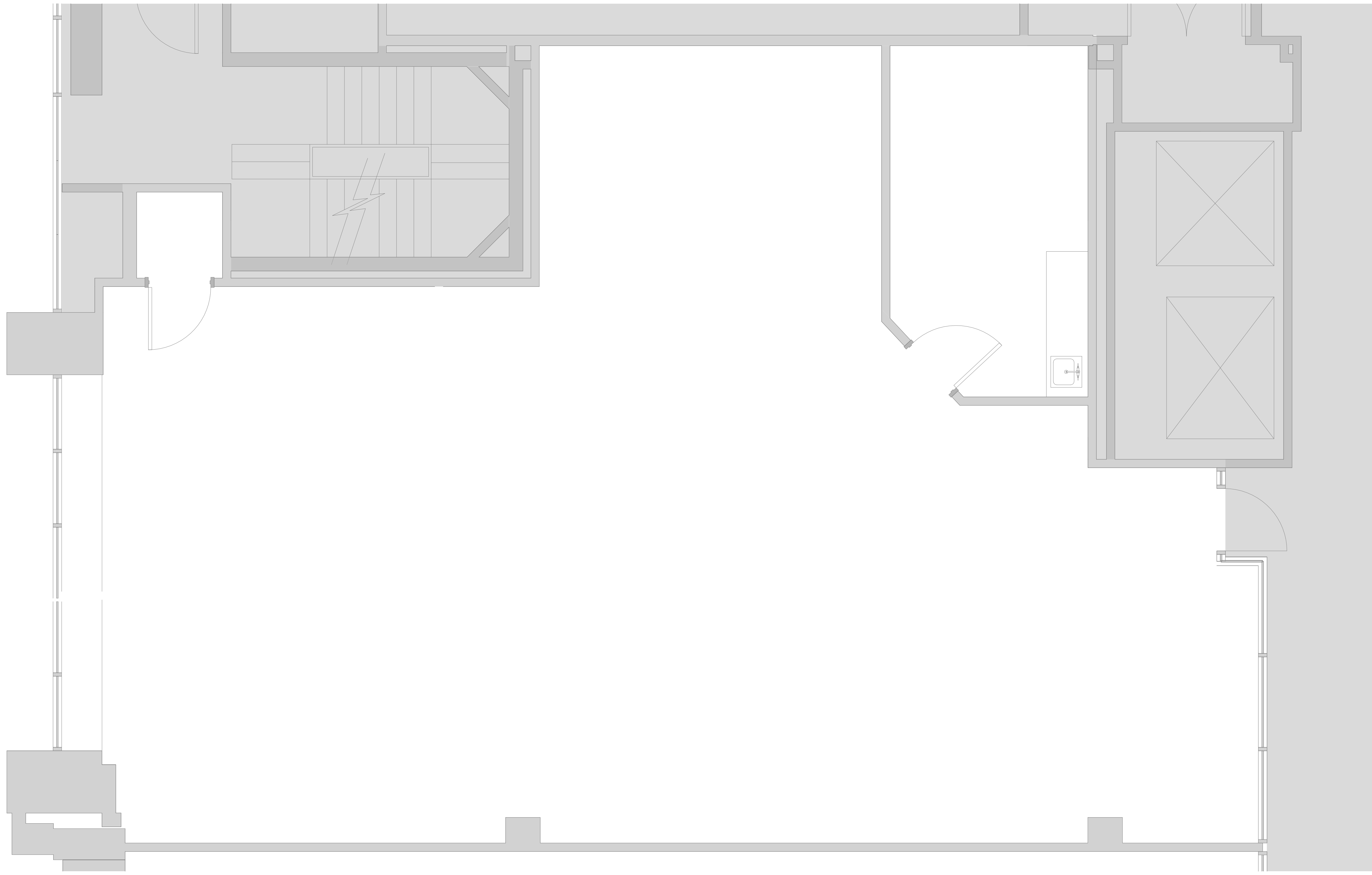
Issues	
Date	Description

Revisions		
No.	Date	Description

Drawing Title
SUITE 13
2,222 RSF

Issue Date:	4-24-2017
Project No:	Scale: 3/8" = 1'-0"
Project Manager:	Production Leader:
Project Architect: CL	Peer Reviewer: CL

Drawing Number
A0.8



1 SUITE 13
3/8" = 1'-0"

DISCLAIMER: ALL BUILDOUT IS BASED ON BRADY SULLIVAN PROPERTIES "CONSTRUCTION STANDARDS". BRADY SULLIVAN PROPERTIES RESERVES THE RIGHT TO ISSUE A CHANGE ORDER FOR ADDITIONAL WORK NOT INCLUDED IN DRAWINGS.