



Brady Sullivan Properties
 670 N. Commercial Street
 Manchester, nh 03101
 603.622.6223



Owner
**BRADY SULLIVAN
 PROPERTIES**
 MANCHESTER NH

Project
1750 ELM STREET
 MANCHESTER NH

Seals
 PROGRESS PRINT

Issues	
Date	Description

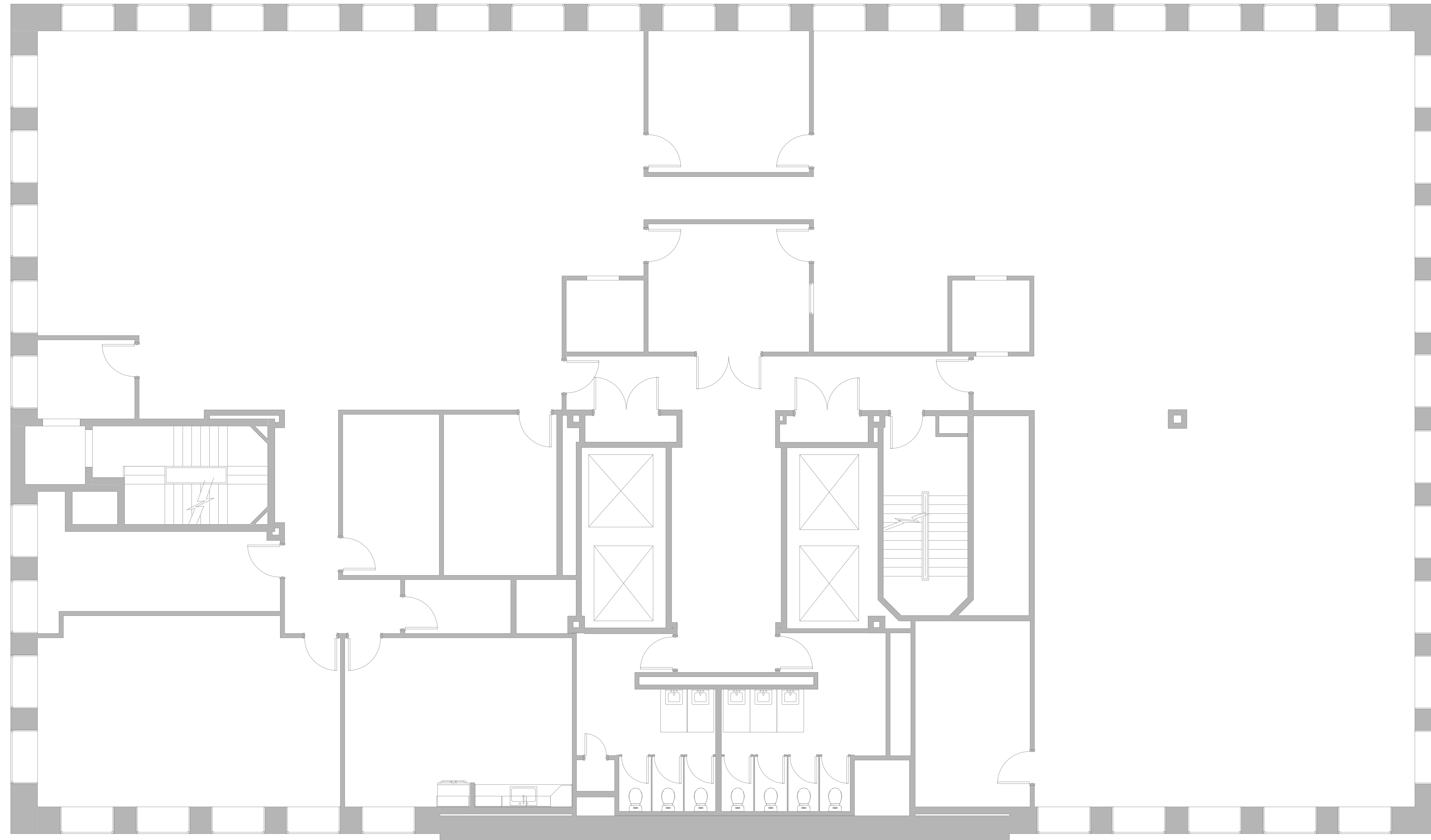
Revisions		
No.	Date	Description

Drawing Title
**EXISTING FLOOR
 PLAN**

Issue Date:	10-2-2019
Project No:	Scale: As indicated
Project Manager:	Production Leader:
Project Architect:	Peer Reviewer:

Drawing Number
A.101

LEGEND			
	NOT IN SCOPE		PROPOSED ITEMS(HEAVY LINE WEIGHT)
	EXISTING ITEMS		PROPOSED ITEMS(HEAVY LINE WEIGHT)
	NEW DOOR AND FRAME		EXISTING DOOR AND FRAME TO REMAIN



1 SUITE 500
 3/16" = 1'-0"