



Brady Sullivan Properties
670 N. Commercial Street
Manchester, nh 03101
603.622.6223

Notice:
This drawing is the property of Brady Sullivan Properties. The use, re-use or reproduction of this drawing for any purpose whatsoever without an expressed written agreement between BSP and the user is prohibited.
Rights to use the information on this sheet are not transferred until payment has been received for services rendered. Any rights so granted are non-transferable to other parties without the prior expressed written consent of BSP.

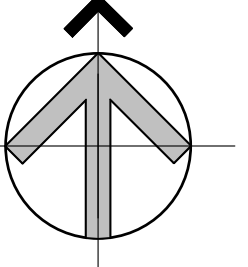
© 2015 Brady Sullivan Properties

Owner

1750 Elm Street
Brady Sullivan Tower
Manchester, NH

Project

CALLLED NORTH



Seals

PROGRESS PRINT

Issues

Date	Description

Revisions

No.	Date	Description

Drawing Title

SUITE 403
2,307 RSF

Issue Date:

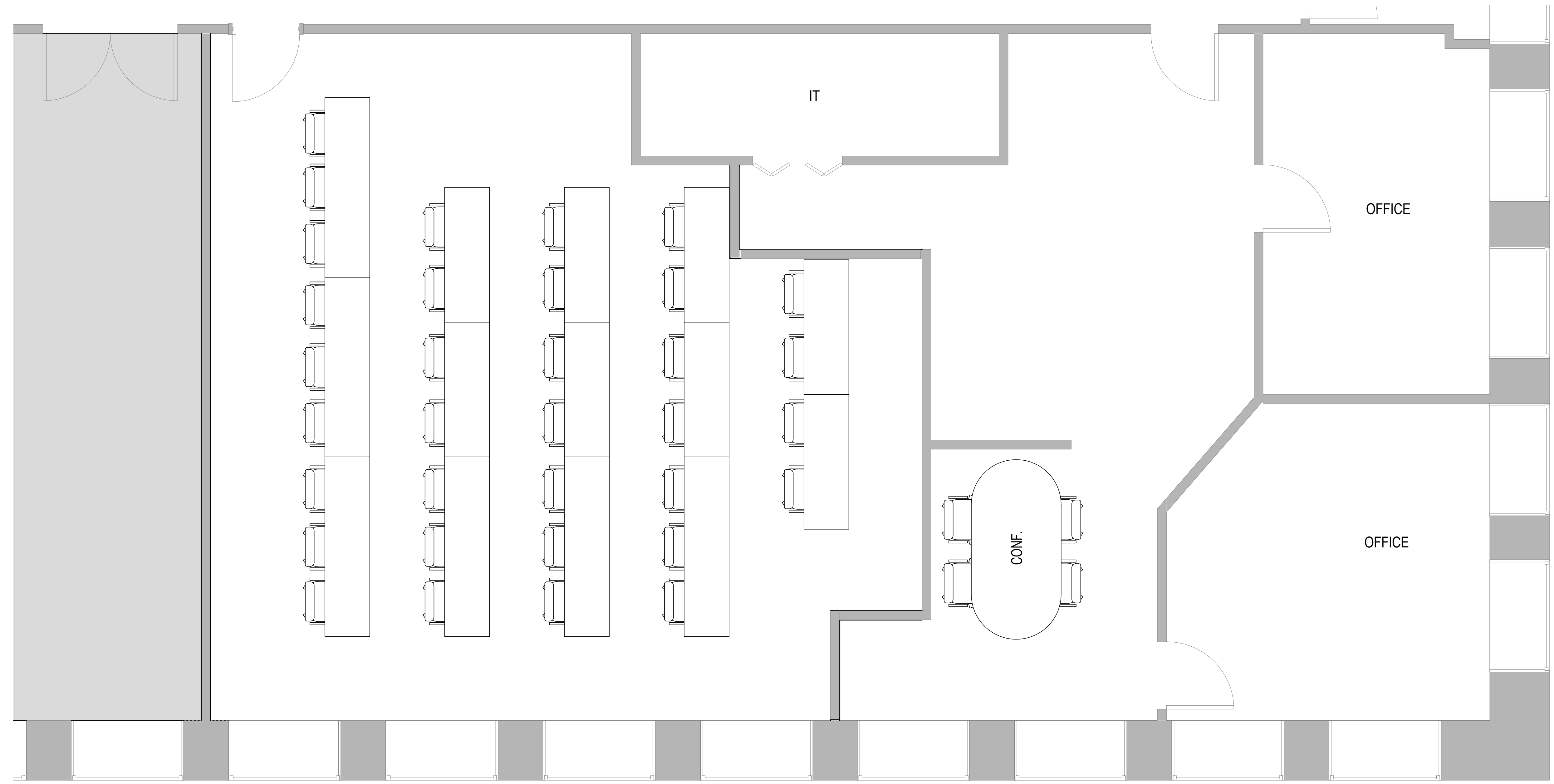
Project No: Scale: 3/8" = 1'-0"

Project Manager: Production Leader:

Project Architect: Peer Reviewer:

Drawing Number

A.107



1 4TH FLOOR - SUITE 403
3/8" = 1'-0"

2,307 RSF

DISCLAIMER: ALL BUILDOUT IS BASED ON BRADY SULLIVAN PROPERTIES "CONSTRUCTION STANDARDS". BRADY SULLIVAN PROPERTIES RESERVES THE RIGHT TO ISSUE A CHANGE ORDER FOR ADDITIONAL WORK NOT INCLUDED IN DRAWINGS.

4/23/2015 11:22:44 AM