

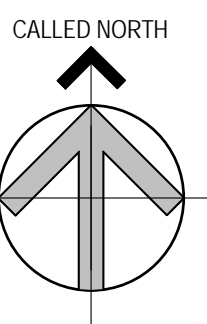


Brady Sullivan Properties  
670 N. Commercial Street  
Manchester, nh 03101  
603.622.6223



Owner  
**BRADY SULLIVAN  
PROPERTIES**  
MANCHESTER NH

Project  
**1750 Elm Street**  
MANCHESTER NH



Seals

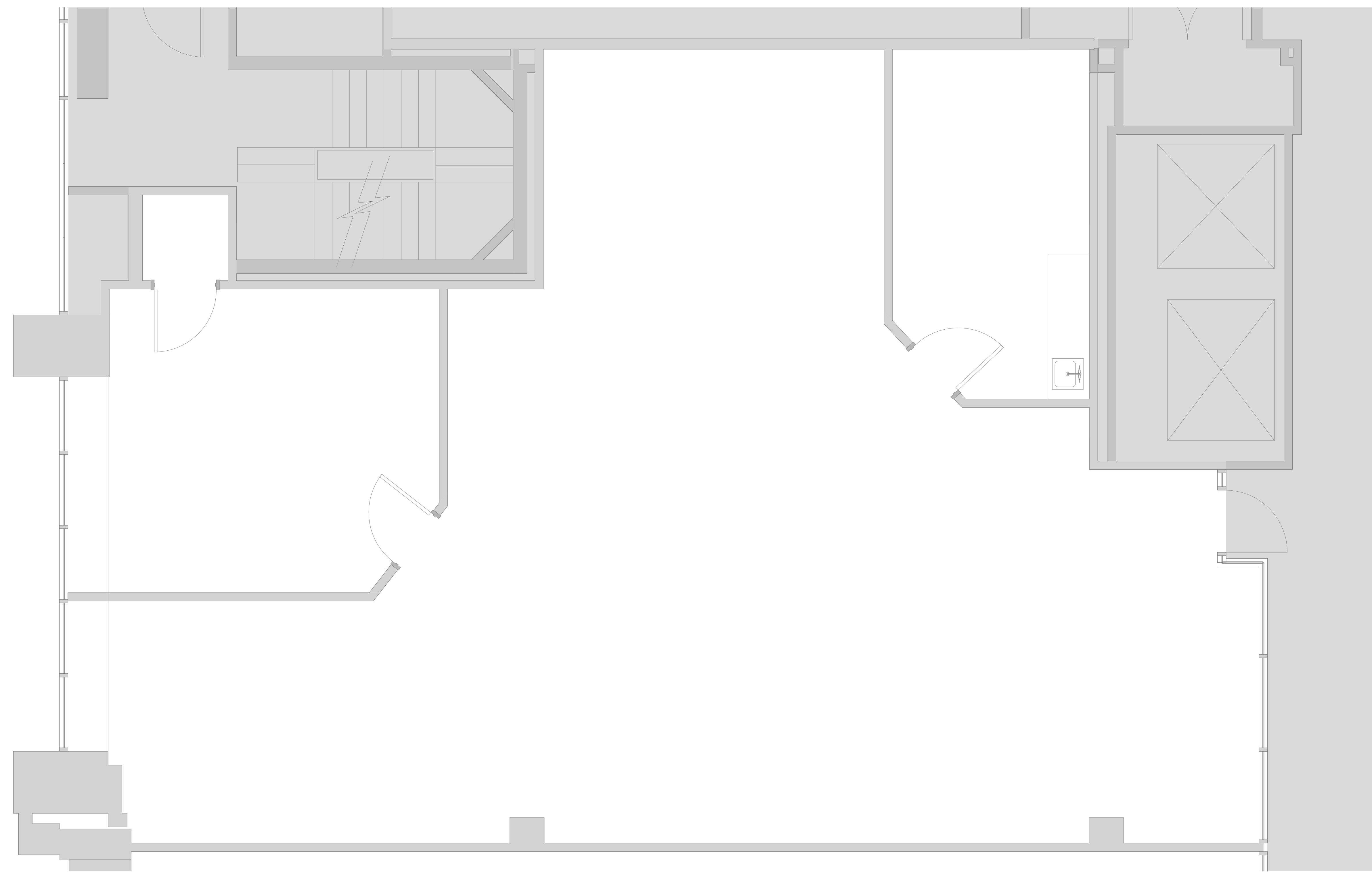
Issues	
Date	Description

Revisions		
No.	Date	Description

Drawing Title  
**SUITE 13**  
**2,222 RSF**

Issue Date:	4-24-2017
Project No:	Scale: 3/8" = 1'-0"
Project Manager:	Production Leader:
Project Architect: CL	Peer Reviewer: CL

Drawing Number  
**A0.8**



**1 SUITE 13**  
3/8" = 1'-0"

**DISCLAIMER:** ALL BUILDOUT IS BASED ON BRADY SULLIVAN PROPERTIES "CONSTRUCTION STANDARDS". BRADY SULLIVAN PROPERTIES RESERVES THE RIGHT TO ISSUE A CHANGE ORDER FOR ADDITIONAL WORK NOT INCLUDED IN DRAWINGS.

4/24/2017 1:44:37 PM



Brady Sullivan Properties  
 670 N. Commercial Street  
 Manchester, nh 03101  
 603.622.6223



Owner  
**BRADY SULLIVAN  
 PROPERTIES**  
 MANCHESTER  
 NH

Project  
**1750 ELM STREET**  
 MANCHESTER NH

Seals  
 PROGRESS PRINT

Issues	
Date	Description

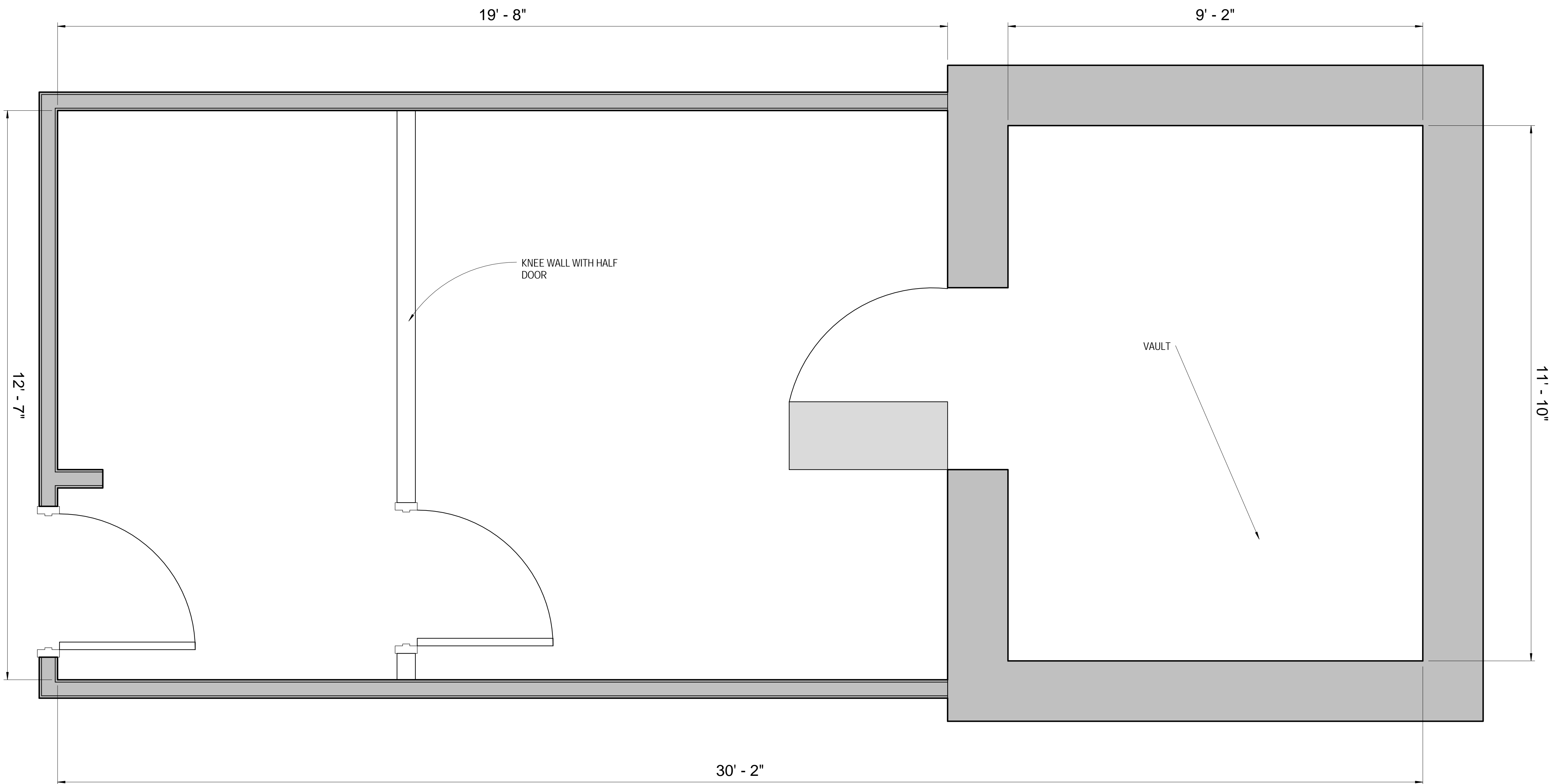
Revisions		
No.	Date	Description

Drawing Title  
**SUITE 16**  
**530 RSF**

Issue Date: 4-24-2017  
 Project No: Scale: 3/4" = 1'-0"  
 Project Manager: Production Leader:  
 Project Architect: Peer Reviewer:

Drawing Number  
**A.106**

1  
 3/4" = 1'-0"  
**SUITE 16**



**DISCLAIMER:** ALL BUILDOUT IS BASED ON BRADY SULLIVAN PROPERTIES "CONSTRUCTION STANDARDS".  
 BRADY SULLIVAN PROPERTIES RESERVES THE RIGHT TO ISSUE A CHANGE ORDER FOR ADDITIONAL WORK  
 NOT INCLUDED IN DRAWINGS.



Brady Sullivan Properties  
670 N. Commercial Street  
Manchester, nh 03101  
603.622.6223



Owner  
**BRADY SULLIVAN  
PROPERTIES**  
MANCHESTER,  
NH

Project  
**1750 ELM STREET**  
MANCHESTER, NH

Seals  
PROGRESS PRINT

Issues	
Date	Description

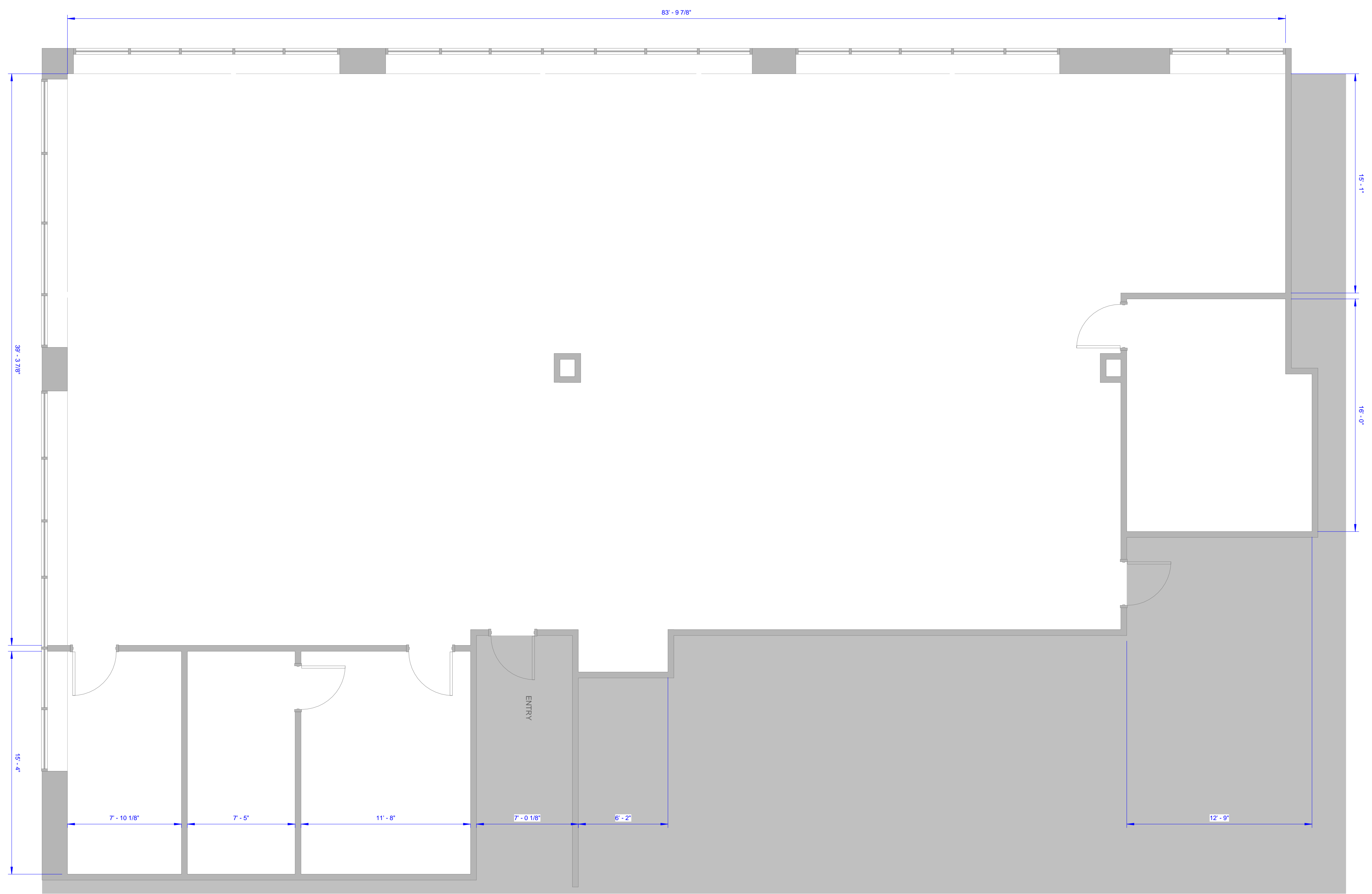
Revisions		
No.	Date	Description

Drawing Title  
**SUITE 104**  
**4,175 RSF**

Issue Date:	4-18-2017
Project No:	Scale: 1/4" = 1'-0"
Project Manager:	Production Leader:
Project Architect:	Peer Reviewer:

Drawing Number  
**A.105**

1  
1/4" = 1'-0"  
SUITE 104 - EXISTING



**DISCLAIMER:** ALL BUILDOUT IS BASED ON BRADY SULLIVAN PROPERTIES "CONSTRUCTION STANDARDS". BRADY SULLIVAN PROPERTIES RESERVES THE RIGHT TO ISSUE A CHANGE ORDER FOR ADDITIONAL WORK NOT INCLUDED IN DRAWINGS.

4/18/2017 10:42:23 AM



Brady Sullivan Properties  
 670 N. Commercial Street  
 Manchester, nh 03101  
 603.622.6223



Owner  
**BRADY SULLIVAN  
 PROPERTIES**  
 MANCHESTER  
 NH

Project  
**1750 ELM STREET**  
 MANCHESTER NH

Seals  
 PROGRESS SET

Issues	
Date	Description

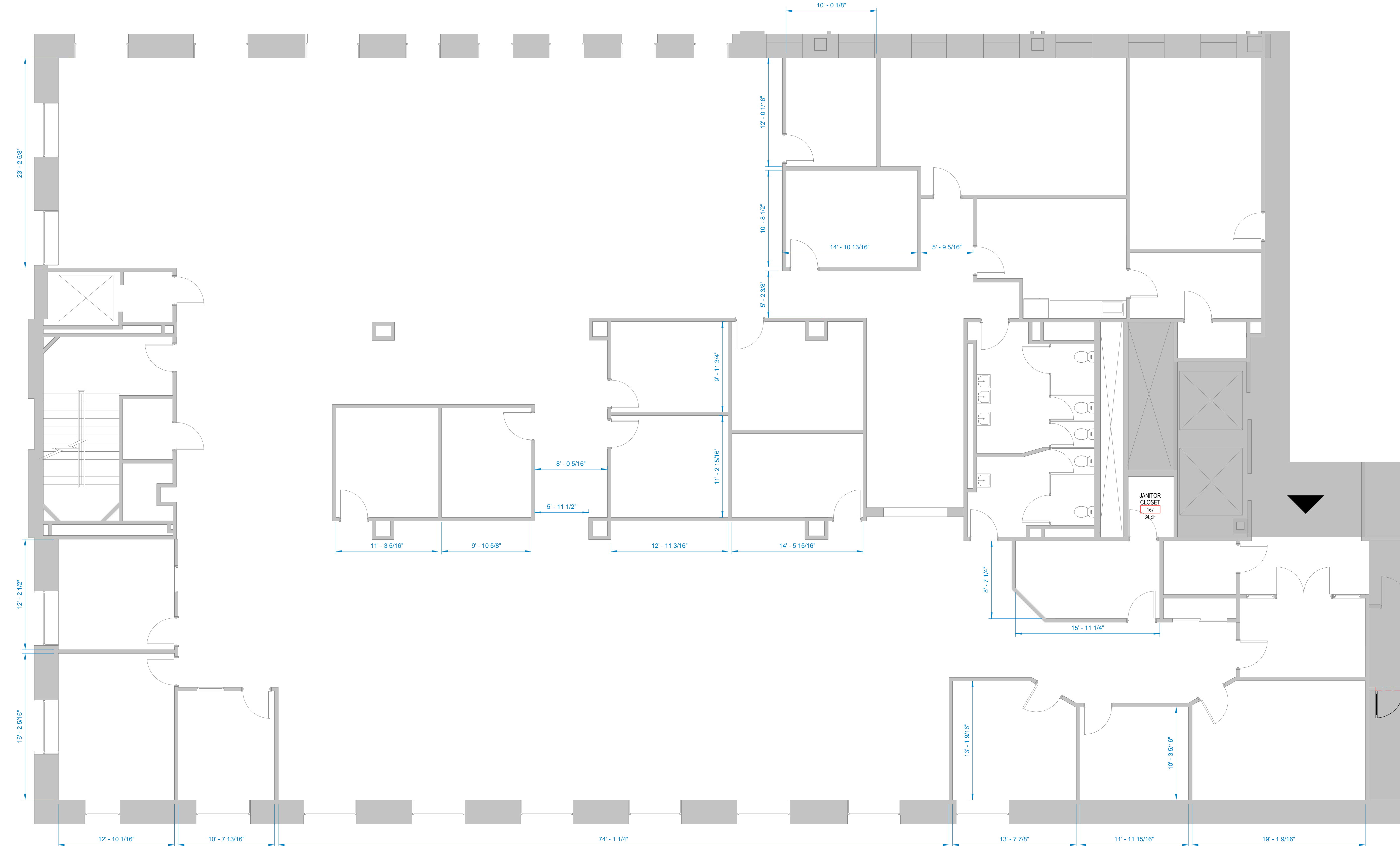
Revisions		
No.	Date	Description

Drawing Title  
**SUITE 200**  
 12,502 RSF

Issue Date:	4-24-2017
Project No:	Scale: As indicated
Project Manager:	Production Leader:
Project Architect: RO	Peer Reviewer: CL

Drawing Number  
**A0.4**

LEGEND			
	NOT IN SCOPE		PROPOSED ITEMS (HEAVY LINE WEIGHT)
	EXISTING ITEMS		DEMO ITEMS
	NEW DOOR AND FRAME		EXISTING DOOR AND FRAME TO REMAIN



**1 SUITE 200**  
 3/16" = 1'-0"

**DISCLAIMER:** ALL BUILDOUT IS BASED ON BRADY SULLIVAN PROPERTIES "CONSTRUCTION STANDARDS". BRADY SULLIVAN PROPERTIES RESERVES THE RIGHT TO ISSUE A CHANGE ORDER FOR ADDITIONAL WORK NOT INCLUDED IN DRAWINGS.

4/24/2017 1:51:27 PM

10 9 8 7 6 5 4 3 2 1

A  
B  
C  
D  
E  
F  
G  
H



1 SUITE 201B  
1/4" = 1'-0"



Brady Sullivan Properties  
670 N. Commercial Street  
Manchester, nh 03101  
603.622.6223



Owner  
**BRADY SULLIVAN  
PROPERTIES**  
MANCHESTER  
NH

Project  
**1750 ELM STREET**  
MANCHESTER NH

Seals  
PROGRESS SET

Issues

Date	Description

Revisions

No.	Date	Description

Drawing Title  
**SUITE 201B**  
**3,334 RSF**

Issue Date:	4-24-2017
Project No:	Scale: 1/4" = 1'-0"
Project Manager:	Production Leader:
Project Architect: RO	Peer Reviewer: CL

Drawing Number  
**A0.6**

10 9 8 7 6 5 4 3 2 1

4/24/2017 1:56:32 PM

**DISCLAIMER:** ALL BUILDOUT IS BASED ON BRADY SULLIVAN PROPERTIES "CONSTRUCTION STANDARDS".  
BRADY SULLIVAN PROPERTIES RESERVES THE RIGHT TO ISSUE A CHANGE ORDER FOR ADDITIONAL WORK  
NOT INCLUDED IN DRAWINGS.

10 9 8 7 6 5 4 3 2 1



Brady Sullivan Properties  
670 N. Commercial Street  
Manchester, nh 03101  
603.622.6223



Owner  
**BRADY SULLIVAN PROPERTIES**  
MANCHESTER NH

Project  
**1750 ELM STREET**  
MANCHESTER NH

Seals  
PROGRESS SET

Issues

Date	Description

Revisions

No.	Date	Description

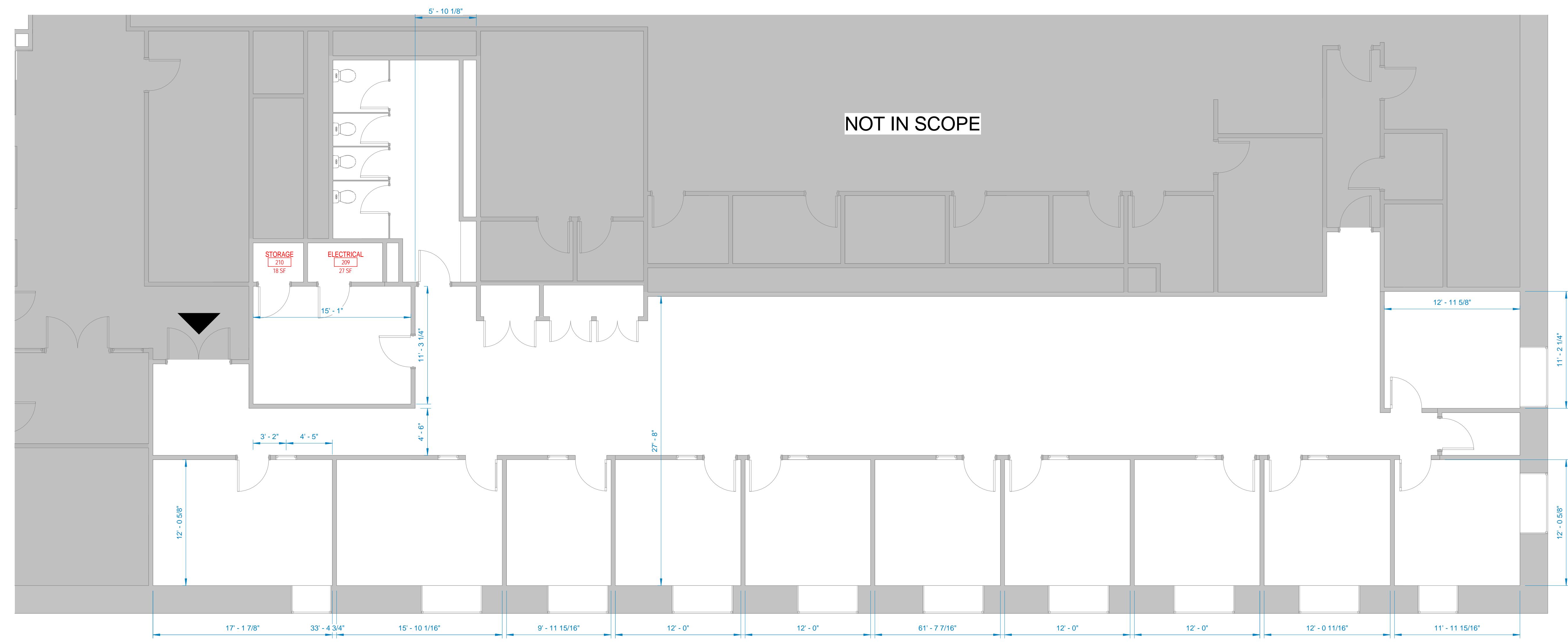
Drawing Title  
**SUITE 202**  
**5,006 RSF**

Issue Date:	4-24-2017
Project No:	Scale: As indicated
Project Manager:	Production Leader:
Project Architect: RO	Peer Reviewer: CL

Drawing Number  
**A0.5**

**LEGEND**

	NOT IN SCOPE		PROPOSED ITEMS (HEAVY LINE WEIGHT)
	EXISTING ITEMS		DEMO ITEMS
	NEW DOOR AND FRAME		EXISTING DOOR AND FRAME TO REMAIN



**1 SUITE 202**  
3/16" = 1'-0"

**DISCLAIMER:** ALL BUILDOUT IS BASED ON BRADY SULLIVAN PROPERTIES "CONSTRUCTION STANDARDS". BRADY SULLIVAN PROPERTIES RESERVES THE RIGHT TO ISSUE A CHANGE ORDER FOR ADDITIONAL WORK NOT INCLUDED IN DRAWINGS.

4/24/2017 1:52:53 PM

10 9 8 7 6 5 4 3 2 1



Brady Sullivan Properties  
 670 N. Commercial Street  
 Manchester, nh 03101  
 603.622.6223



Owner  
**BRADY SULLIVAN  
 PROPERTIES**  
 MANCHESTER NH

Project  
**1750 ELM STREET**  
 MANCHESTER NH

Seals

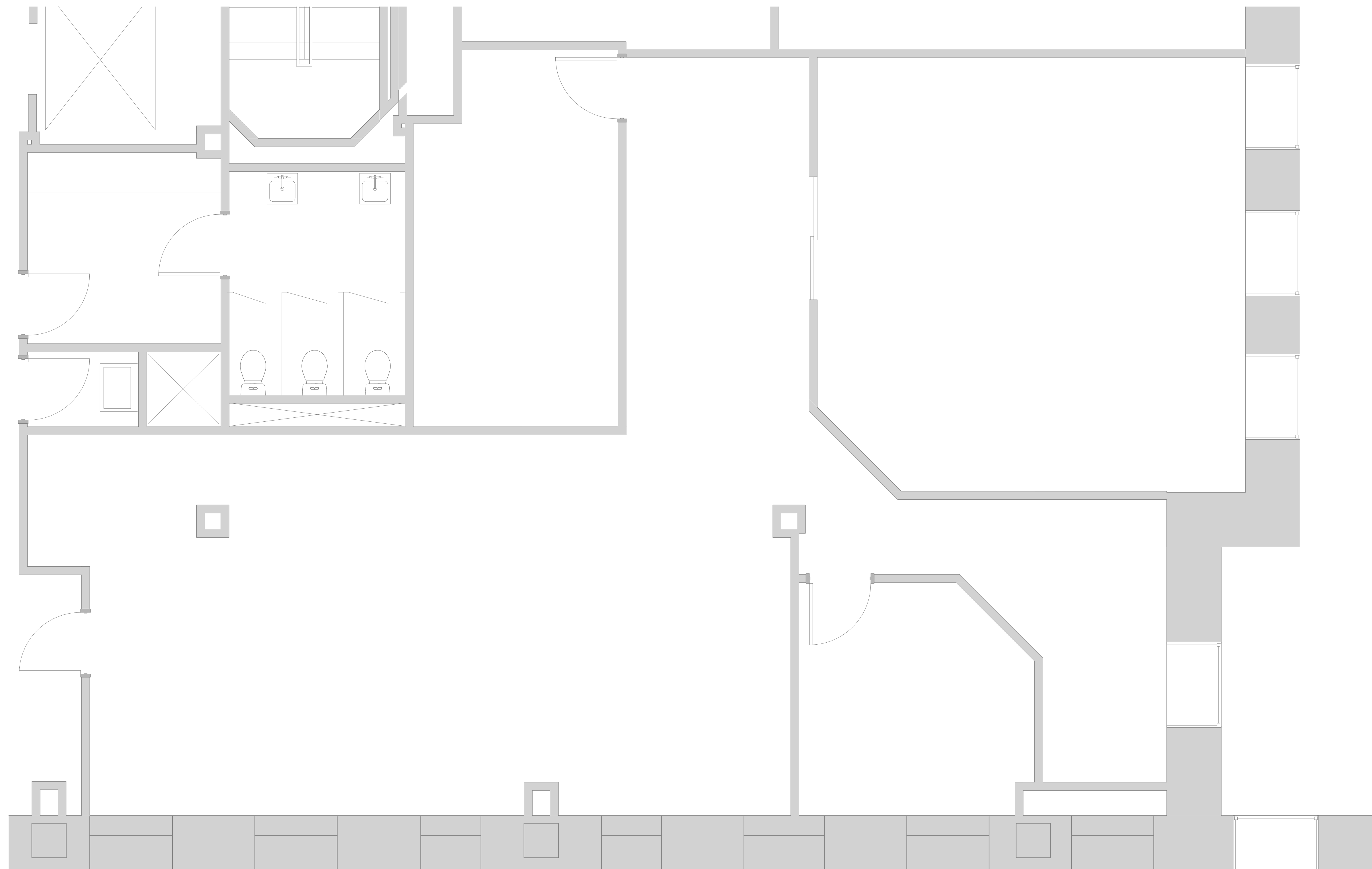
Issues	
Date	Description

Revisions		
No.	Date	Description

Drawing Title  
**SUITE 203**  
**2,787 RSF**

Issue Date:	4-24-2017
Project No:	Scale: 3/8" = 1'-0"
Project Manager:	Production Leader:
Project Architect: CL	Peer Reviewer: CL

Drawing Number  
**A0.5**



1 SUITE 203  
 3/8" = 1'-0"

**DISCLAIMER:** ALL BUILDOUT IS BASED ON BRADY SULLIVAN PROPERTIES "CONSTRUCTION STANDARDS". BRADY SULLIVAN PROPERTIES RESERVES THE RIGHT TO ISSUE A CHANGE ORDER FOR ADDITIONAL WORK NOT INCLUDED IN DRAWINGS.

4/24/2017 3:25:56 PM



Brady Sullivan Properties  
 670 N. Commercial Street  
 Manchester, nh 03101  
 603.622.6223



Owner  
**BRADY SULLIVAN  
 PROPERTIES**

Project  
**1750 ELM STREET**  
 MANCHESTER NH

Seals

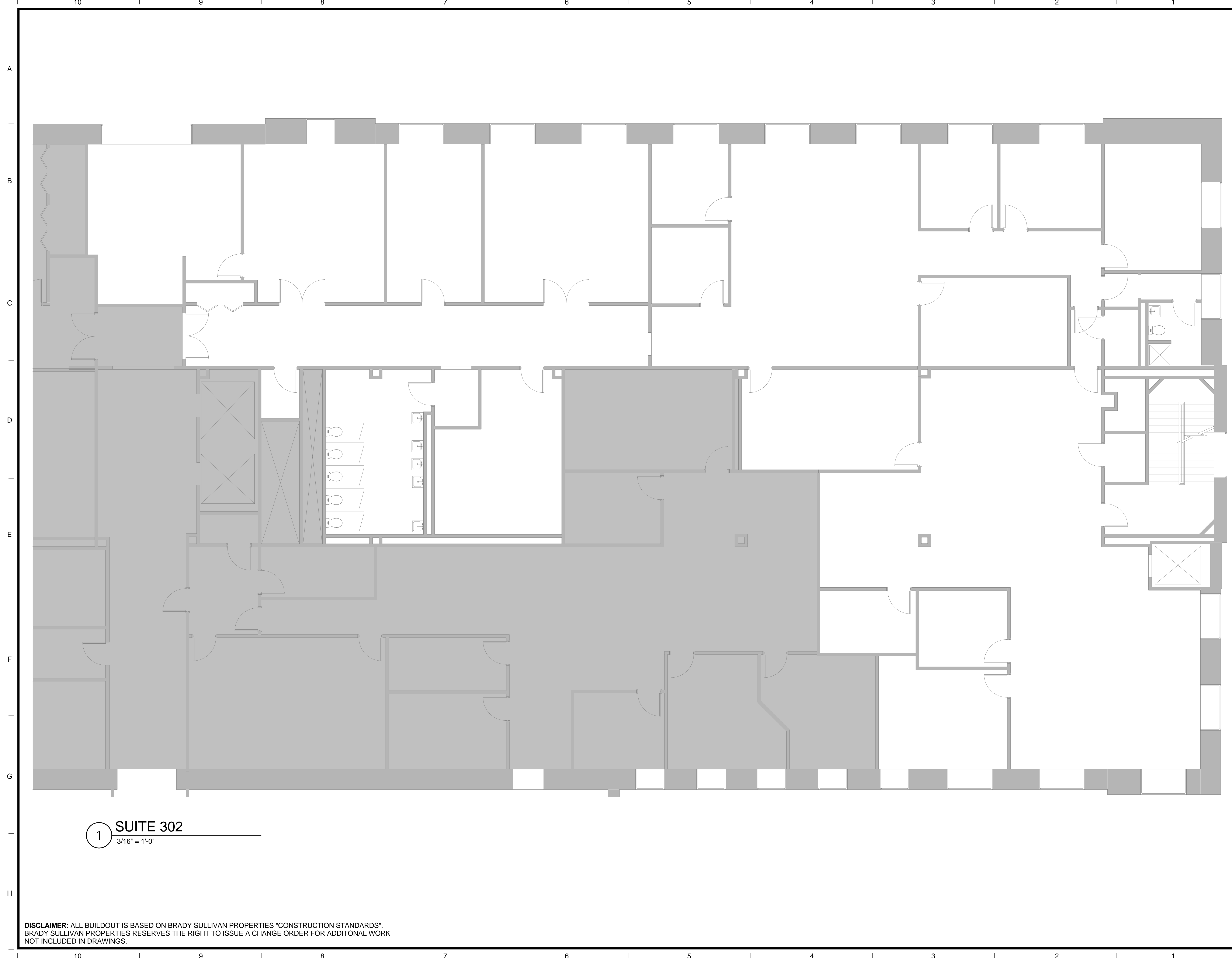
Issues	
Date	Description

Revisions		
No.	Date	Description

Drawing Title  
**SUITE 302**  
 9,392 RSF

Issue Date:	4-24-2017
Project No:	Scale: 3/16" = 1'-0"
Project Manager:	Production Leader:
Project Architect: CL	Peer Reviewer: CL

Drawing Number  
**A0.0**



1 SUITE 302  
 3/16" = 1'-0"

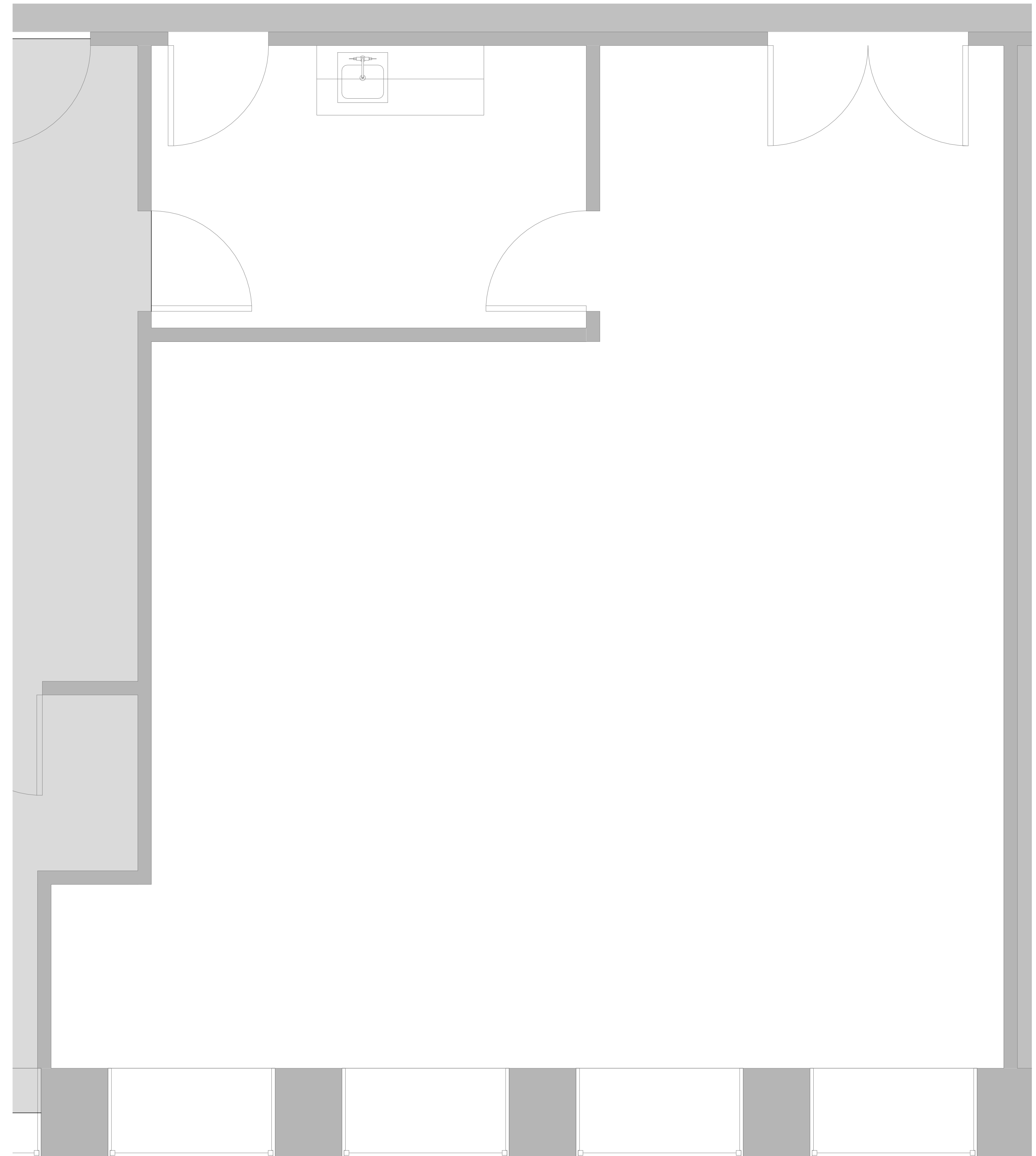
**DISCLAIMER:** ALL BUILDOUT IS BASED ON BRADY SULLIVAN PROPERTIES "CONSTRUCTION STANDARDS". BRADY SULLIVAN PROPERTIES RESERVES THE RIGHT TO ISSUE A CHANGE ORDER FOR ADDITIONAL WORK NOT INCLUDED IN DRAWINGS.

4/24/2017 3:30:24 PM



10 9 8 7 6 5 4 3 2 1

A  
B  
C  
D  
E  
F  
G  
H



1 4TH FLOOR - EXHIBIT  
1/2" = 1'-0"



Brady Sullivan Properties  
670 N. Commercial Street  
Manchester, nh 03101  
603.622.6223



Owner  
**BRADY SULLIVAN  
PROPERTIES**  
MANCHESTER  
NH

Project  
**1750 ELM STREET**  
MANCHESTER NH

Seals  
PROGRESS PRINT

Issues	
Date	Description

Revisions		
No.	Date	Description

Drawing Title  
**SUITE 405**  
**1,100 RSF**

Issue Date:	4-24-2017
Project No:	Scale: 1/2" = 1'-0"
Project Manager:	Production Leader:
Project Architect:	Peer Reviewer:

Drawing Number  
**A.107**

4/24/2017 4:11:22 PM

**DISCLAIMER:** ALL BUILDOUT IS BASED ON BRADY SULLIVAN PROPERTIES "CONSTRUCTION STANDARDS". BRADY SULLIVAN PROPERTIES RESERVES THE RIGHT TO ISSUE A CHANGE ORDER FOR ADDITIONAL WORK NOT INCLUDED IN DRAWINGS.

10 9 8 7 6 5 4 3 2 1



Brady Sullivan Properties  
670 N. Commercial Street  
Manchester, nh 03101  
603.622.6223



Owner  
**BRADY SULLIVAN  
PROPERTIES**  
MANCHESTER  
NH

Project  
**1750 ELM STREET**  
MANCHESTER NH

Seals  
PROGRESS PRINT

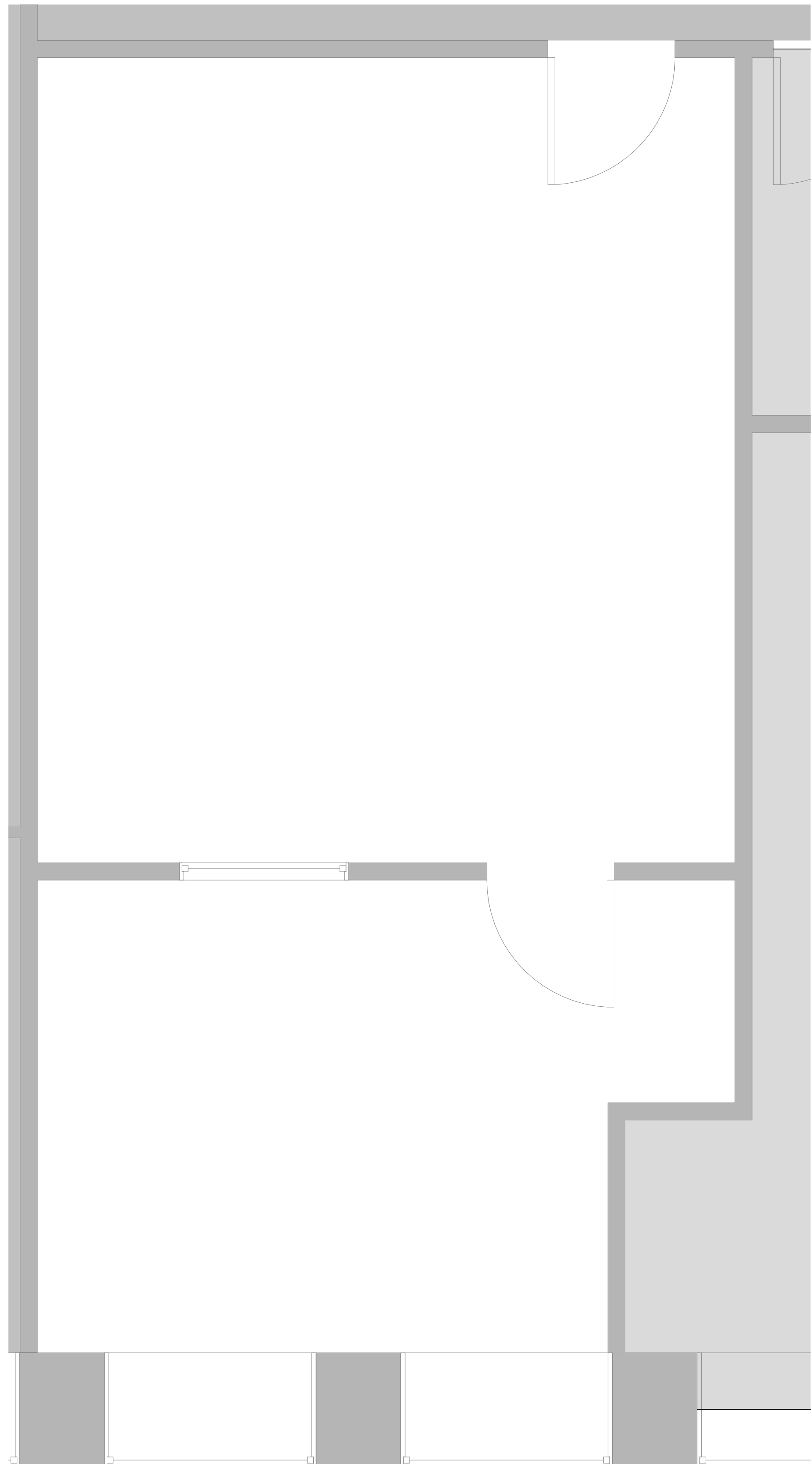
Issues	
Date	Description

Revisions		
No.	Date	Description

Drawing Title  
**SUITE 406**  
**812 RSF**

Issue Date: 4-24-2017  
Project No: Scale: 1/2" = 1'-0"  
Project Manager: Production Leader:  
Project Architect: Peer Reviewer:

Drawing Number  
**A.107**



1 4TH FLOOR - EXHIBIT  
1/2" = 1'-0"

DISCLAIMER: ALL BUILDOUT IS BASED ON BRADY SULLIVAN PROPERTIES "CONSTRUCTION STANDARDS".  
BRADY SULLIVAN PROPERTIES RESERVES THE RIGHT TO ISSUE A CHANGE ORDER FOR ADDITIONAL WORK  
NOT INCLUDED IN DRAWINGS.

4/24/2017 4:12:27 PM