



Brady Sullivan Properties  
 670 N. Commercial Street  
 Manchester, nh 03101  
 603.622.6223



Owner  
 Brady Sullivan Properties

Project  
 1000 ELM STREET  
 MANCHESTER, NH

SUITE 601  
 1,085 RSF

Seals

Issues	
Date	Description

Revisions		
No.	Date	Description

Drawing Title

Issue Date: 3-13-2017

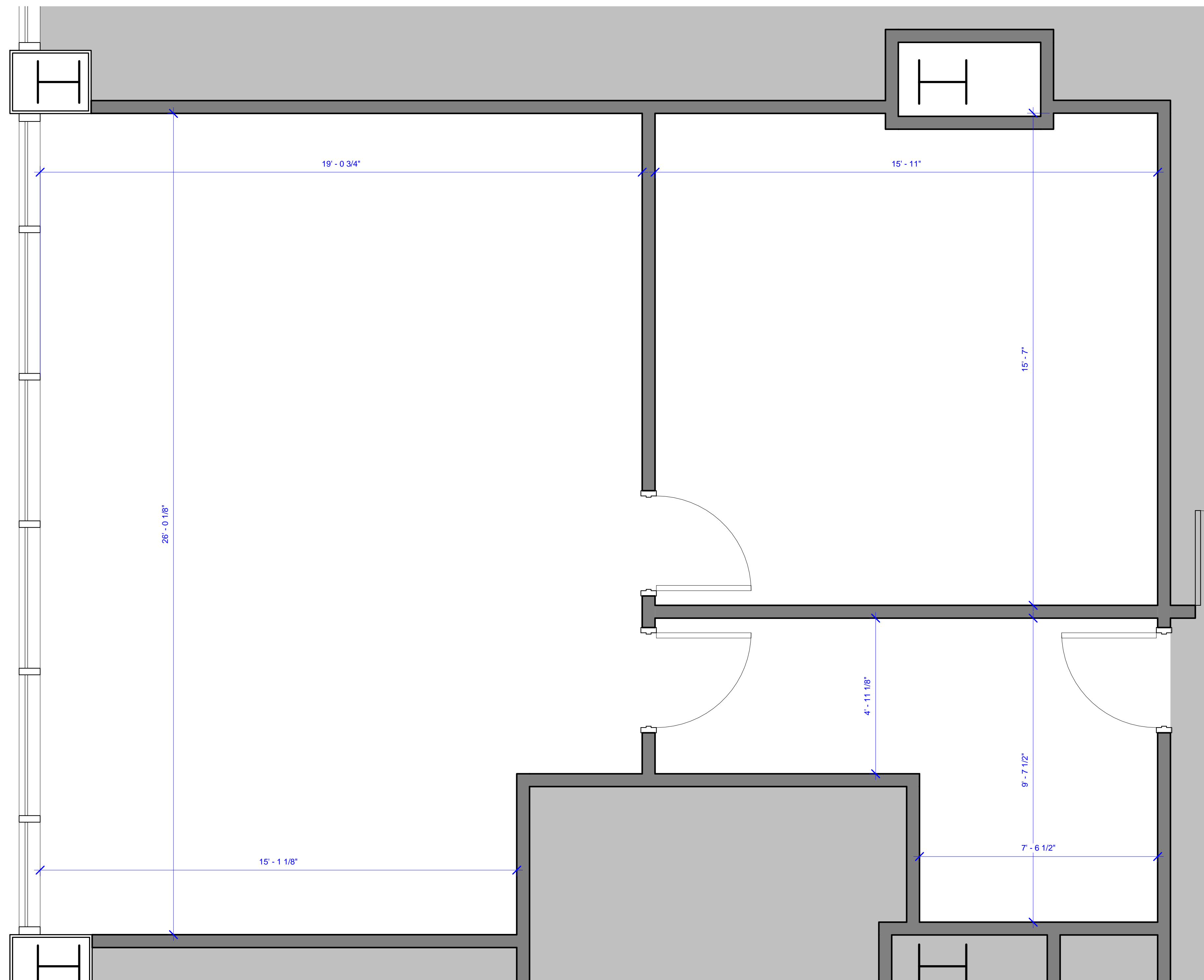
Project No: 1055 Scale: 1/2" = 1'-0"

Project Manager: Production Leader:

Project Architect: Peer Reviewer:

Drawing Number

A1-15



1 SUITE 601  
 1/2" = 1'-0"

DISCLAIMER: ALL BUILDOUT IS BASED ON BRADY SULLIVAN PROPERTIES "CONSTRUCTION STANDARDS".  
 BRADY SULLIVAN PROPERTIES RESERVES THE RIGHT TO ISSUE A CHANGE ORDER FOR ADDITIONAL WORK  
 NOT INCLUDED IN DRAWINGS.

3/13/2017 11:14:10 AM