



Brady Sullivan Properties
 670 N. Commercial Street
 Manchester, nh 03101
 603.622.6223



Owner
**BRADY SULLIVAN
 PROPERTIES**

Project
**1000 ELM STREET
 MANCHESTER NH**

Seals
 0%

998 RSF

Issues	
Date	Description

Revisions		
No.	Date	Description

Drawing Title
**PLAZA SUITE
 20**

Issue Date: 11-23-2021

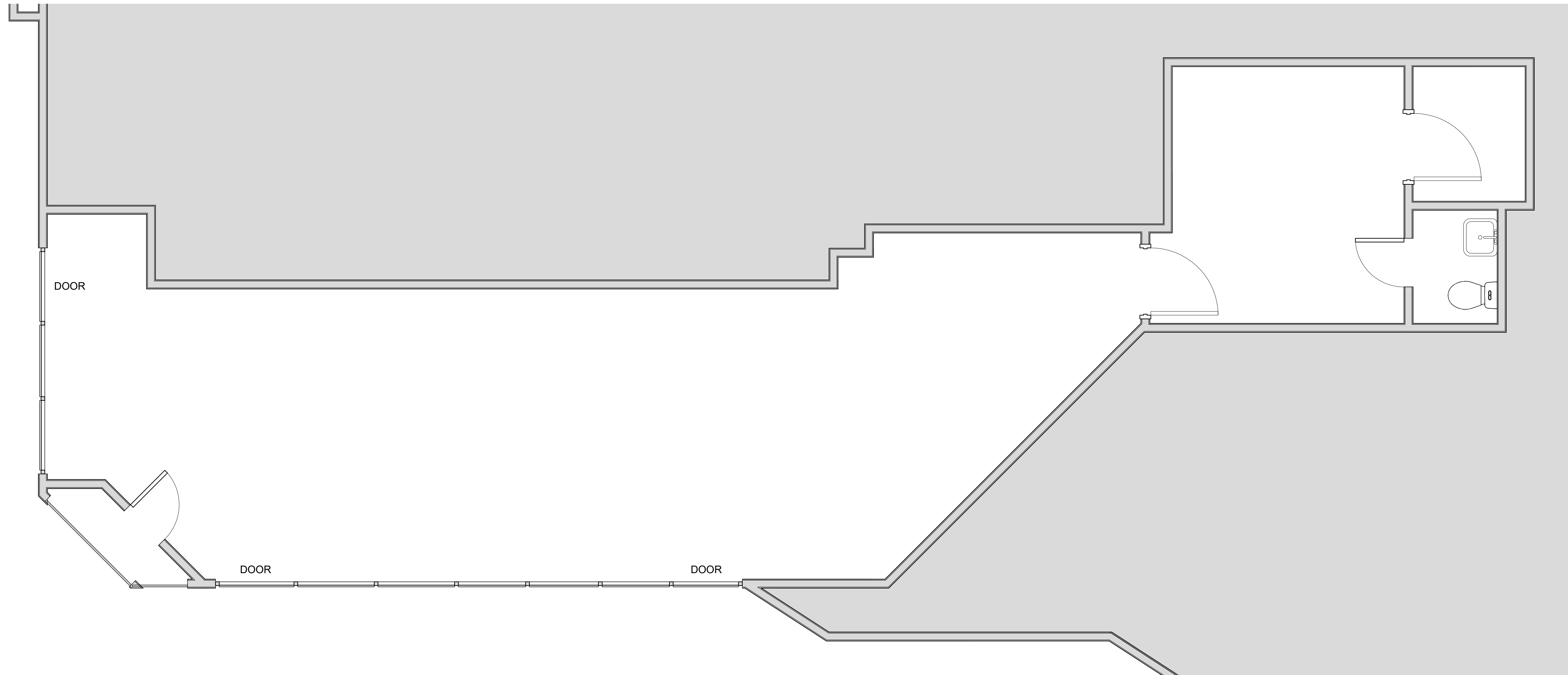
Project No: Project Number Scale: 3/8" = 1'-0"

Project Manager: Production Leader:

Project Architect: Peer Reviewer:

Drawing Number

A1-15



① RETAIL SUITE
 3/8" = 1'-0"