

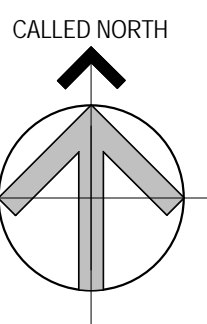


Brady Sullivan Properties
 670 N. Commercial Street
 Manchester, nh 03101
 603.622.6223



Owner
**BRADY SULLIVAN
 PROPERTIES**

Project
1000 ELM STREET
 MANCHESTER NH



Seals
 0%

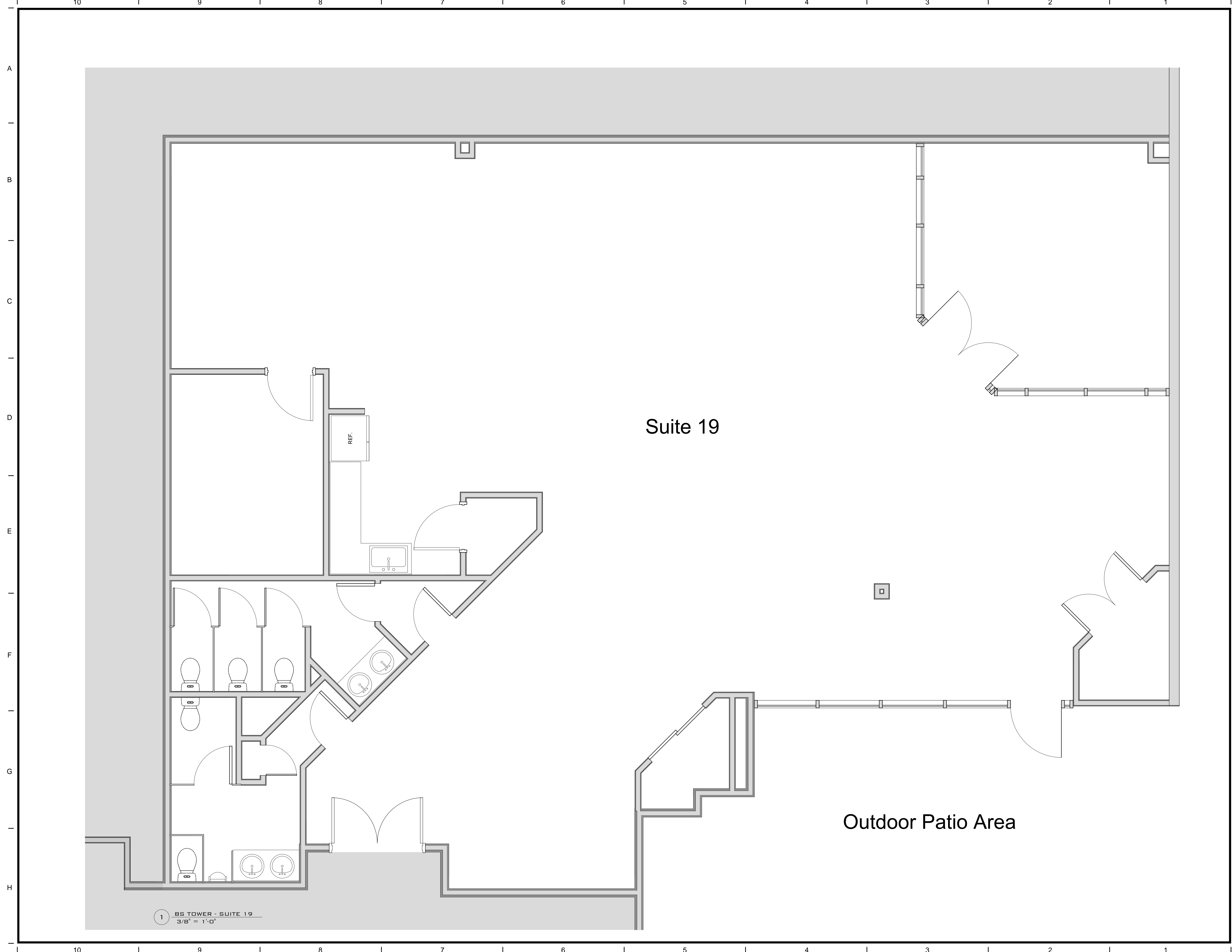
Issues	
Date	Description

Revisions		
No.	Date	Description

Drawing Title
SUITE 19
3,542 RSF

Issue Date: **8-16-2018**
 Project No: Project Number Scale: **3/8" = 1'-0"**
 Project Manager: Production Leader:
 Project Architect: Peer Reviewer:

Drawing Number
A1-13



Suite 19

Outdoor Patio Area

1 BS TOWER - SUITE 19
 3/8" = 1'-0"

8/16/2018 4:50:40 PM