



Brady Sullivan Properties
 670 N. Commercial Street
 Manchester, nh 03101
 603.622.6223



Owner
 Brady Sullivan Properties

Project
 1000 ELM STREET
 MANCHESTER, NH

Seals

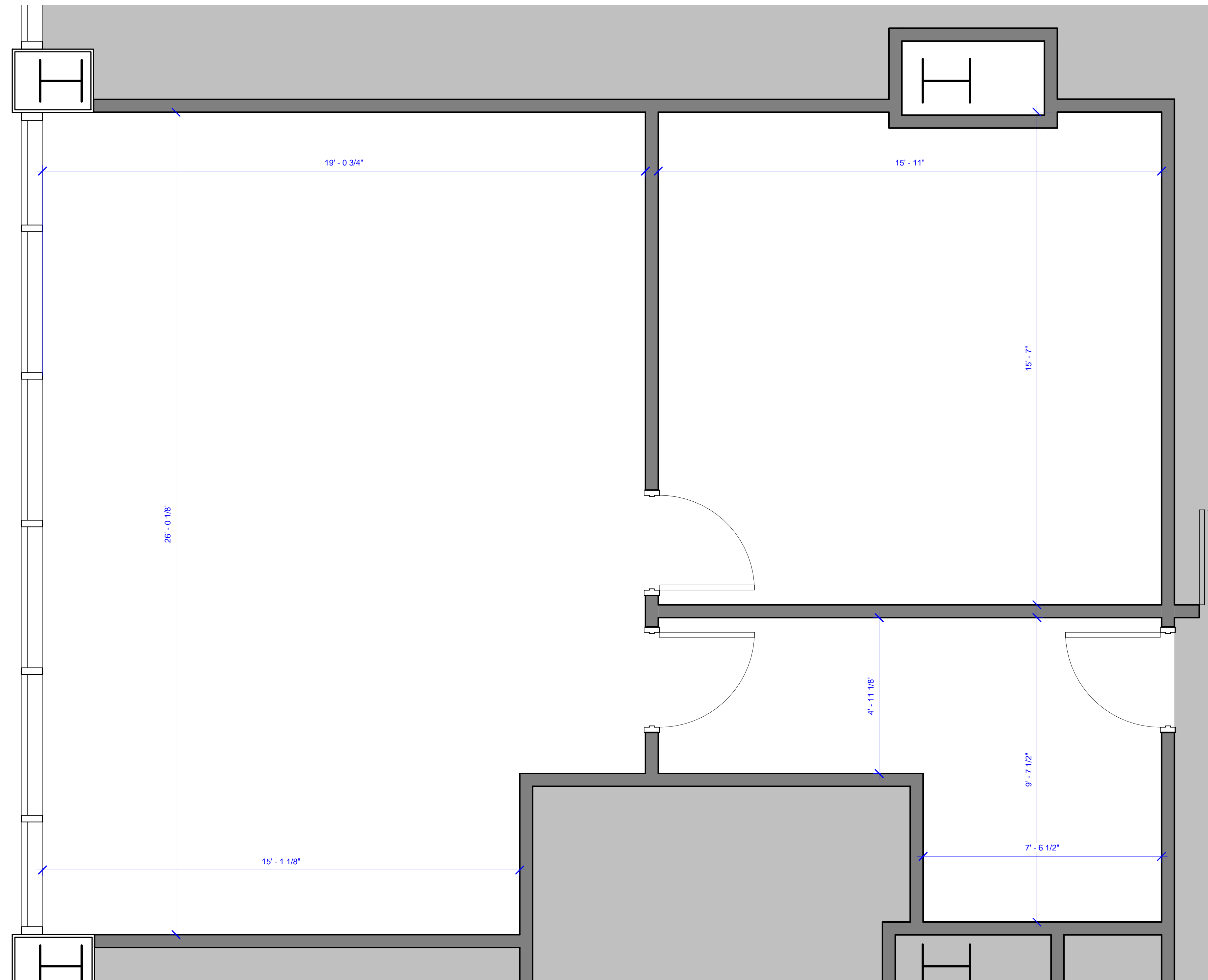
Issues	
Date	Description

Revisions		
No.	Date	Description

Drawing Title
SUITE 600
1,085 RSF

Issue Date: 3-13-2017
 Project No: 1055 Scale: 1/2" = 1'-0"
 Project Manager: Production Leader
 Project Architect: Peer Reviewer

Drawing Number
A1-15



1 SUITE 600
 1/2" = 1'-0"

DISCLAIMER: ALL BUILDOUT IS BASED ON BRADY SULLIVAN PROPERTIES "CONSTRUCTION STANDARDS".
 BRADY SULLIVAN PROPERTIES RESERVES THE RIGHT TO ISSUE A CHANGE ORDER FOR ADDITIONAL WORK
 NOT INCLUDED IN DRAWINGS.

3/13/2017 11:14:10 AM