



Brady Sullivan Properties
 670 N. Commercial Street
 Manchester, nh 03101
 603.622.6223



Owner
**BRADY SULLIVAN
 PROPERTIES**

Project
1000 ELM STREET

 MANCHESTER, NH

Seals

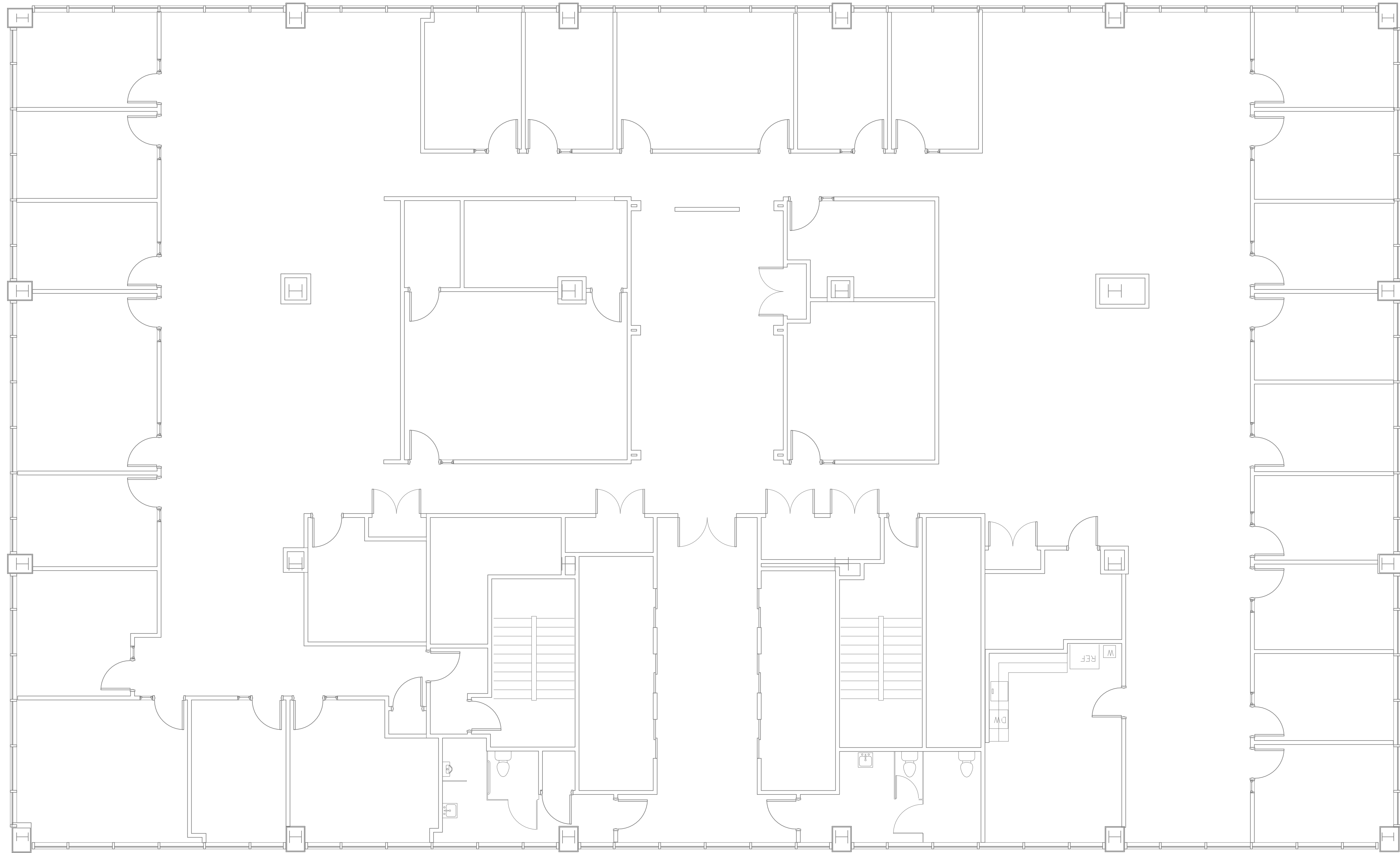
Issues	
Date	Description

Revisions		
No.	Date	Description

Drawing Title
SUITE 12

Issue Date:	10-11-2019	
Project No:	1055	Scale: 3/16" = 1'-0"
Project Manager:	Production Leader:	
Project Architect:	Peer Reviewer:	

Drawing Number
A1-3



1 SUITE 12
 3/16" = 1'-0"