



Brady Sullivan Properties
 670 N. Commercial Street
 Manchester, nh 03101
 603.622.6223



Owner
 BRADY SULLIVAN
 PROPERTIES

Project
 1000 ELM STREET
 MANCHESTER, NH

PROPOSED
 SUITE 400 +/-
 2,700 RSF

Seals
 SUITE 402

Issues	
Date	Description

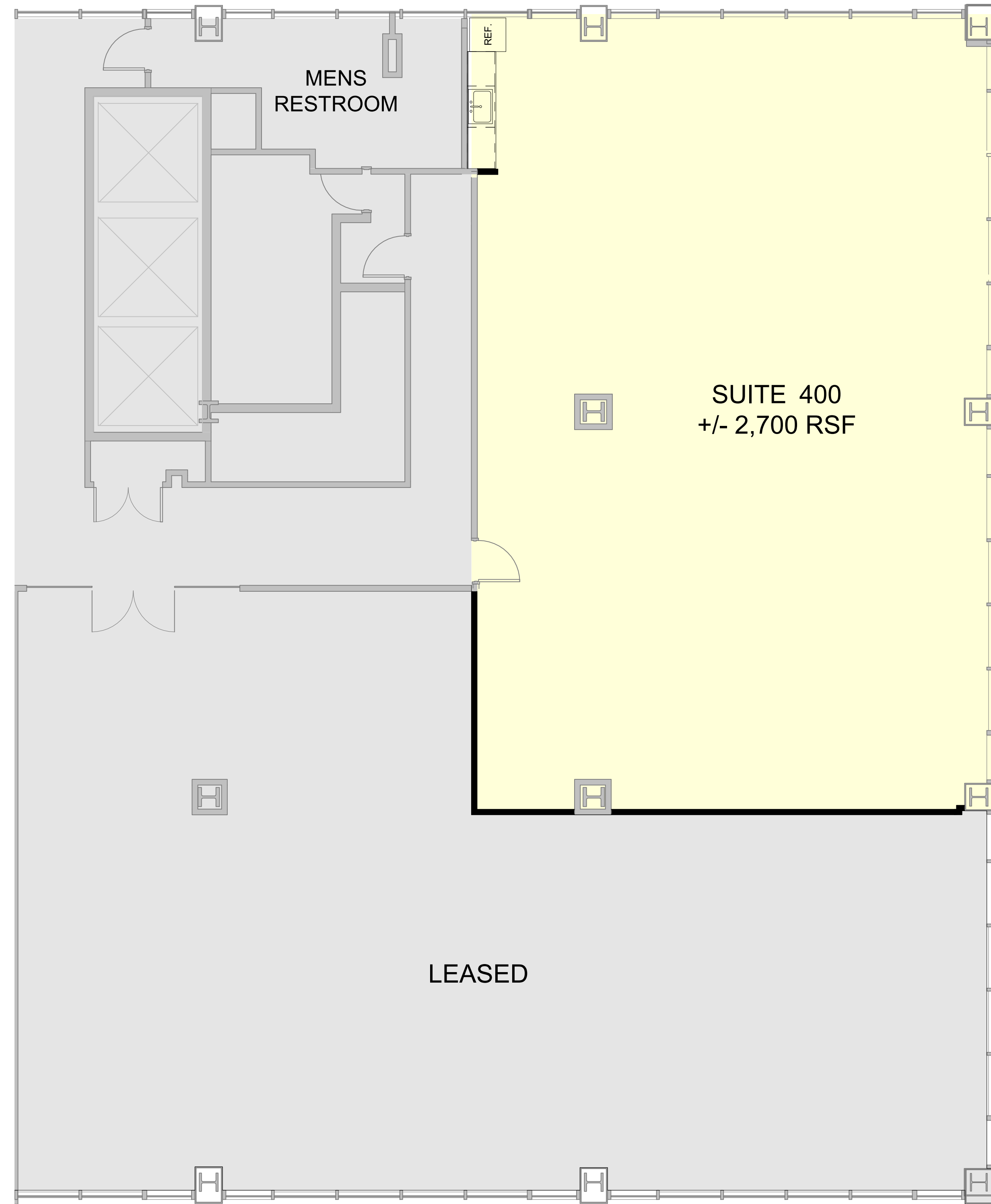
Revisions		
No.	Date	Description

Drawing Title
**PROPOSED
 4TH FLOOR
 PLAN**

Issue Date:	1-18-2022
Project No:	1055
Project Manager:	Production Leader:
Project Architect:	Peer Reviewer:

Drawing Number
A1-25

LEGEND	
	NOT IN SCOPE
	PROPOSED ITEMS (HEAVY LINE WEIGHT)
	EXISTING ITEMS
	EXISTING DOOR AND FRAME TO REMAIN
	NEW DOOR AND FRAME
	DEMO ITEMS



1 SUITE 400
 3/16" = 1'-0"

3/23/2022 3:49:28 PM